

RESOLUTION NO. 2021-XX

A RESOLUTION OF THE CITY COUNCIL OF THE CITY OF FULLERTON, CALIFORNIA, DESIGNATING 40 FEET OF CURB, IN FRONT OF 4010 WEST COMMONWEALTH AVENUE, AS A PLACE WHERE PARKING OF VEHICLES IS RESTRICTED TO 20 MINUTES OF CONTINUOUS PARKING BETWEEN THE HOURS OF 6:00 A.M. AND 6:00 P.M., SUNDAY AND HOLIDAYS EXEMPT

THE CITY COUNCIL OF THE CITY OF FULLERTON HEREBY RESOLVES AS FOLLOWS:

1. City Council designates 40 feet of curb, in front of 4010 West Commonwealth Avenue, in the City of Fullerton as shown in Exhibit "A", as a place where parking shall be limited to 20 minutes of continuous parking between the hours of 6:00 a.m. and 6:00 p.m., Sunday and Holidays exempt.
2. City Council directs the Director of Public Works to install signing and paint 40 feet of yellow curb, as required by law, giving notice of the restriction.
3. No person shall park in excess of 20 minutes during specified times and days stated when signs are in place.

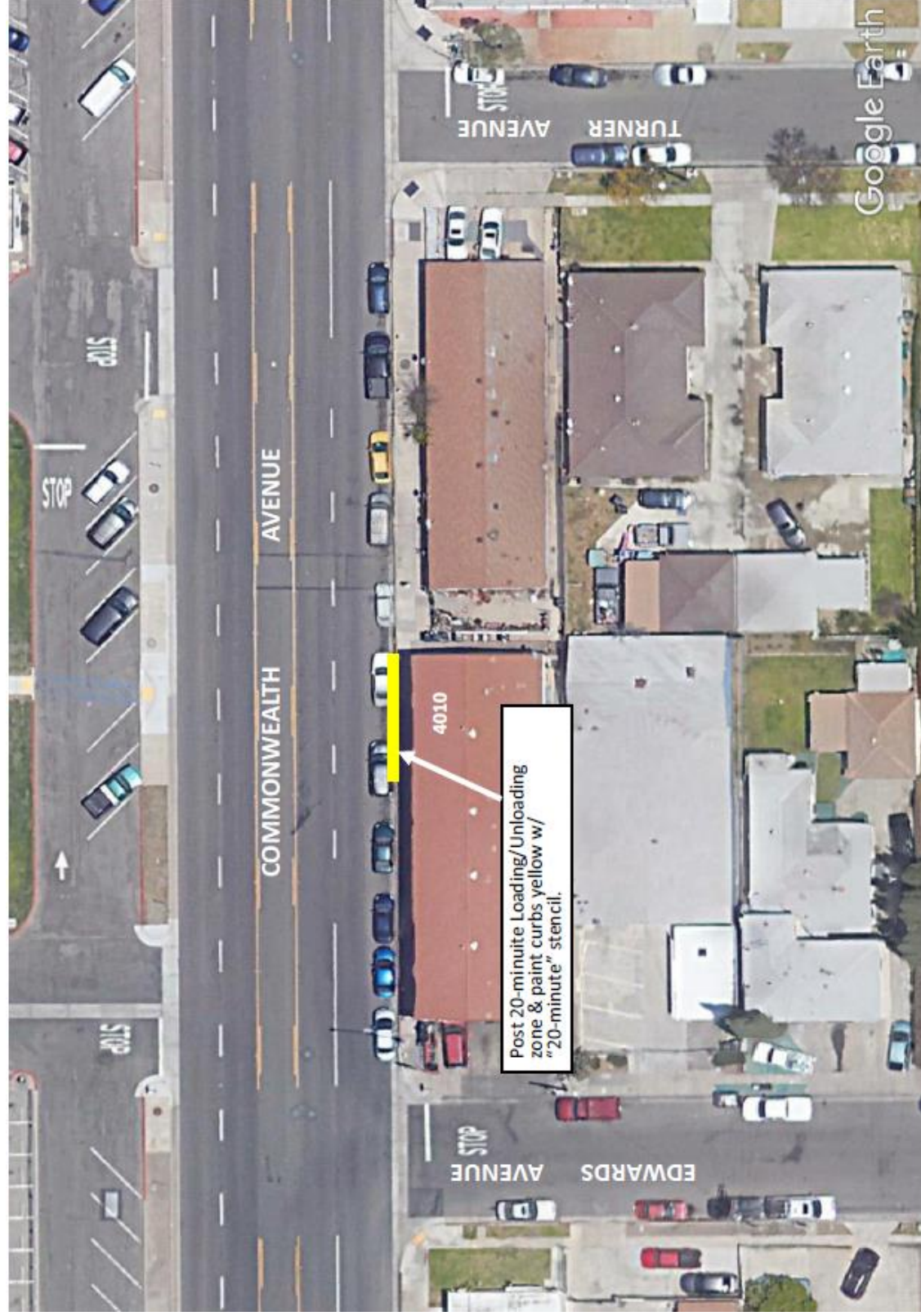
ADOPTED BY THE FULLERTON CITY COUNCIL ON \_\_\_\_\_.

\_\_\_\_\_  
Bruce Whitaker  
Mayor

ATTEST:

\_\_\_\_\_  
Lucinda Williams, MMC  
City Clerk

Date:\_\_\_\_\_



**4010 W. COMMONWEALTH AVENUE - 20 Minute Loading/Unloading**

**Exhibit "A"**