

RESOLUTION NO. 2020-XX

A RESOLUTION OF THE CITY OF FULLERTON, CALIFORNIA, ADOPTING THE CITY OF FULLERTON LOCAL HAZARD MITIGATION PLAN AS APPROVED BY FEMA ON JUNE 10, 2019 AND CORRESPONDING REVISIONS TO THE FULLERTON PLAN, INCLUDING A COMPREHENSIVE UPDATE TO APPENDIX I, THEREBY ADOPTING THE LOCAL HAZARD MITIGATION PLAN INTO THE SAFETY ELEMENT OF THE CITY'S GENERAL PLAN PURSUANT TO GOVERNMENT CODE SECTION 65302.6

LOCAL HAZARD MITIGATION PLAN
APPLICANT: CITY OF FULLERTON

RECITALS:

WHEREAS Fullerton Municipal Code (FMC) Section 2.18.080 establishes the Powers and Duties of the Planning Commission including "to recommend and implement a master or general plan or amendments thereto..." Government Code Section 65353(a) provides that when the Planning Commission has such authorization, the Commission shall hold at least one public hearing before making a recommendation on the adoption of or amendment of a general plan to the City Council; and

WHEREAS the Planning Commission of the City of Fullerton has held a duly noticed public hearing on April 15, 2020, as required by law, to consider adoption of the Local Hazard Mitigation Plan as approved by FEMA on June 10, 2019 and corresponding revisions to The Fullerton Plan and recommended approval to the City Council;

WHEREAS the City Council of the City of Fullerton has held a duly noticed public hearing, as required by law, to consider adoption of the Local Hazard Mitigation Plan as approved by FEMA on June 10, 2019 and corresponding revisions to The Fullerton Plan;

WHEREAS the City Council does, pursuant to the California Environmental Quality Act (CEQA) Guidelines, finds that the proposed project is statutorily exempt from CEQA review per Section 15061(b)(3);

WHEREAS Government Code Section 65302.6 establishes that a city may adopt a LHMP as part of the safety element of the general plan and in so doing, pursuant to Government Code Section 8685.9, this makes the City eligible to recover additional disaster reimbursement from the State pursuant to AB2140 (2006).

RESOLUTION

The City Council finds as follows:

1. In all respects as set forth in the Recitals of this Resolution.

THEREFORE, the Fullerton City Council finds the project statutorily exempt pursuant to CEQA Guidelines 15061(b)(3) and adopts the City of Fullerton Local Hazard Mitigation Plan as approved by FEMA on June 10, 2019 and corresponding revisions to The Fullerton Plan, including a comprehensive update to Appendix I, thereby adopting the Local Hazard Mitigation Plan into the Safety Element of the City's General Plan pursuant to Government Code Section 65302.6.

ADOPTED BY THE FULLERTON CITY COUNCIL ON MAY 19, 2020.

Jennifer Fitzgerald
Mayor

ATTEST:

Lucinda Williams, MMC
City Clerk

Date

Attachments:

- Amendments to The Fullerton Plan

Chapter 10

Public Safety

Fullerton will be a city which values and provides quality public safety services including emergency services, crime prevention and hazard mitigation.
-The Fullerton Vision

Introduction

Safe and vital neighborhoods, business districts and recreational areas, including the buildings and infrastructure therein, are among Fullerton's most valued qualities and highest priorities. The City's police and fire systems and professionals, as well as its building and code enforcement professionals, provide residents, business owners, property owners, and visitors with a reliable, community-oriented presence that results in effective, preventative and responsive public safety services.

The Public Safety Chapter seeks to sustain and improve the City's commitment to safety through proactive and comprehensive police, fire, building, and code enforcement services that advance community outreach, education, and awareness, reinforce partnerships, promote prevention, and enhance the technical, logistical and technological systems and tools to prepare for and respond to public safety needs.

The following goals and policies are provided to achieve the Fullerton Vision as it pertains to Public Safety.

Associated Tables and Exhibits

- Exhibit 15: Police and Fire Protection Facilities (page 175)
- Exhibit 16: Parcels Located within Fullerton Municipal Airport Runway Protection Zone - Land Use (page 177)
- Exhibit 17: Parcels Located within Fullerton Municipal Airport Accident Potential Zone (APZ II) (page 179)
- Exhibit 18: Part 77 Airspace Plan (page 181)

Overarching Policies

- OAP1.** Comply with State and Federal laws and regulations while maintaining local control in decision-making.
- OAP2.** Pursue Federal, State and local funding options to support implementation of The Fullerton Plan.
- OAP3.** Leverage the advantages and advances of technology.
- OAP4.** Seek opportunities for increased efficiency and effectiveness.

Purpose

The purpose of the Public Safety Element is to provide quality public safety services needed to serve the existing and expected future population in Fullerton.

This Element is required per California Government Code Section 65302.

The City of Fullerton Local Hazard Mitigation Plan (LHMP) has been adopted as part of The Fullerton Plan Safety Element. The Safety Element is divided into two chapters of The Fullerton Plan: Natural Hazards (Chapter 21) and Public Safety (Chapter 10) with additional policies in Public Health (Chapter 11), Water (Chapter 16), Air Quality and Climate Change (Chapter 17), Integrated Waste Management (Chapter 18), and Natural Hazards (Chapter 20). The LHMP evaluates risk to the community from seismic hazards, fire, drought, severe weather, dam failure, human-caused hazards, geologic hazards, flooding, hazardous materials release, and disease/pests. It identifies critical facilities and vulnerable populations within areas of elevated hazard risk. The LHMP includes a hazard mitigation strategy including a prioritized list of mitigation actions to improve Fullerton's resiliency to hazard events.



GOAL 12: Proactively addressing public safety concerns.

Policies

Specific statements that provide a directive or framework for City decision-making that directly contribute to the attainment of the goal.

Region/Subregion Level

P12.1 Healthy Family Development

Support programs that strengthen regional partnerships between public safety and human services agencies to encourage strong family relationships, reinforce healthy child development and encourage lawful behavior.

P12.2 Collaboration with Outside Agencies

Support regional and subregional efforts to prevent violence, child abuse, sexual assault, domestic violence, illegal use of firearms, violence associated with substance abuse, crimes against property and other similar issues.

P12.5 Community Preservation

Support policies, programs and regulations pertaining to proactive code enforcement methods which reinforce the proper maintenance of properties, buildings and landscapes, and adherence to applicable regulations, while discouraging conditions that foster vandalism and more serious crime.

P12.6 Youth Community Safety Partnership

Support programs that involve young people in discussions about crime and prevention, increase youths' attachment to the community, engage youth in productive activities, and reinforce success in education.

City Level

P12.3 Community Confidence Building

Support policies and programs that bolster productive communication and problem-solving between public safety personnel and the Fullerton community.

P12.4 Balance Safety Needs

Support policies, projects, programs, and regulations that balance the need to reduce vehicle accidents, injuries, and deaths through traffic calming and street design with the need to facilitate emergency response times.

P12.7 Fire Code Amendments

Support policies, programs and regulations that give the Fire Marshall flexibility to approve streets and fire lanes with reduced clearance requirements when other fire safety factors are incorporated into the project (such as street connectivity, traffic safety and the presence of sprinkler systems).

P12.7.1 THIRA*

Support projects, programs, policies and regulations that facilitate the preparation of a THIRA (Threat and Hazard Identification Risk Assessment) plan in accordance with FEMA guidelines that allows Fullerton to plan for and address the risks of human-caused hazards.



GOAL 14: **An environment with opportunities for community health and wellbeing.**

Policies

Specific statements that provide a directive or framework for City decision-making that directly contribute to the attainment of the goal.

Region/Subregion Level

P14.1 Coordination

Support programs to coordinate with state, county and regional agencies to improve public health and well-being through a range of efforts with regional, subregional and local agencies including schools, local medical facilities, senior centers and adjacent jurisdictions.

City Level

P14.2 Healthy Living

Support policies, projects, programs and regulations that result in changes to the physical environment to improve health, well-being and physical activity.

P14.3 Farmers' Markets

Support policies, projects, programs and regulations that facilitate successful farmers' markets at appropriate and convenient locations throughout the City.

P14.4 Community Gardens

Support policies, projects, programs and regulations that encourage community gardens that are operated and managed by local volunteers and that provide for small-scale local food production in areas convenient to residents.

P14.4.1 Public Health Education*

Support policies, projects, programs, and regulations that disseminate information on low-cost or free healthcare resources both within Fullerton and the surrounding region and that keep residents informed of trending public health hazards and diseases.

P14.4.2 Contagion and Pest Abatement*

Support policies, projects, programs and regulations that allow the City to address any epidemics or vector-borne diseases that arise in the future through emergency closures of public areas, vegetation removal, storm drain clearance, and other such actions.

Neighborhood/District Level

P14.5 Opportunities for Physical Activity

Support policies, projects, programs and regulations that provide for convenient and safe areas that facilitate opportunities for physical activity such as parks, trails, open space, safe streets for bicycling, safe sidewalks for walking, and recreational facilities for residents of all ages and abilities. (See Chapter 12: Parks and Recreation for related policies.)

Chapter 16

Water

Fullerton will be a city which is committed to environmental sustainability in planning design, policy and practice.
-The Fullerton Vision

Introduction

The City's quality of life is dependent upon water and natural watershed resources. In addition to fundamental health and sanitation, an adequate supply of potable water provides significant public and private benefits such as irrigation, ecological habitat, recreation opportunities and aesthetics.

A threat to water resources is drought. Droughts are periods of time when water is scarce due to reduced rainfall. In urbanized areas like Fullerton, this can take the form of deteriorating landscapes in private homes and businesses as well as in public facilities, such as parks. As a segment of Fullerton's water supply is imported from other locations across the state, a drought in these areas may affect the City. Given how frequent droughts are in California, it is highly likely that Fullerton will be impacted at some point in the future by the effects of drought. Within Fullerton, as well as the region, water management is shifting increasingly toward water conservation and efficiency technologies used in planning, design, and construction of sites, buildings, and land uses. Additionally, urban runoff and storm water management is of growing concern at the local, regional, State and Federal levels, and regulations and practices pertaining to storm water are influencing the interrelationships between the built and natural environments.

The Water Element seeks to effectively manage water and natural watershed resources, including water supply, demand, quality, and storm water.

The following goals and policies are provided to achieve the Fullerton Vision as it pertains to Water.

Associated Tables and Exhibits

Exhibit 25.1: Statewide Drought Conditions (page 205.2)*

Overarching Policies

OAP1. Comply with State and Federal laws and regulations while maintaining local control in decision-making.

OAP2. Pursue Federal, State and local funding options to support implementation of The Fullerton Plan.

OAP3. Leverage the advantages and advances of technology.

OAP4. Seek opportunities for increased efficiency and effectiveness.

Purpose

The purpose of the Water Element is to ensure that the City has adequate water resource capacities and water quality to meet future growth needs.

This Element is not required per California Government Code Section 65302; however, as water is of importance to the community of Fullerton, it is prepared as an optional element per California Government Code Section 65303.



GOAL 19: **An adequate, safe, and reliable water supply.**

Policies

Specific statements that provide a directive or framework for City decision-making that directly contribute to the attainment of the goal.

Region/Subregion Level

P19.1 Agency Coordination for Water Supplies
Support regional and subregional efforts to ensure that an adequate water supply, including groundwater, remains available.

P19.2 Conservation Efforts
Support regional and subregional efforts to promote water efficiency and conservation.

P19.3 New Technologies
Support projects, programs, policies and regulations to encourage the use of new technologies which reduce water use.

P19.3.1 Regional Water Protection*
Support regional and subregional efforts to safeguard water infrastructure and supply against the treats of contamination or disruption from disaster events of a regional or national scale, such as terrorism, earthquakes, floods, geologic activity, or other events as they arise.

P19.3.2 Climate Resilience in Water Supply*
Support regional and subregional efforts to adapt current water supply practices in anticipation of reduced water availability due to the effects of climate change.

City Level

P19.4 Adequate Supply
Support projects, programs, policies and regulations to maintain adequate quantities of water, including groundwater, available to the City now and in the future.

P19.5 Water Quality

Support projects, programs, policies and regulations to ensure the quality of the water supply.

P19.5.1 Water-saving Infrastructure*

Support projects, programs, policies, and regulations that will lead to the capture, storage, and re-use of rainwater in the city so as to reduce Fullerton's dependence on external sources of water.

Neighborhood/District Level

P19.6 Focus Area Planning

Support projects, programs, policies and regulations to evaluate ways to conserve and reduce water use as part of community-based planning of Focus Areas.

Project Level

P19.7 Sustainable Water Practices in New Development

Support projects, programs, policies and regulations to encourage water efficient practices in site and building design for private and public projects.

GOAL 20: A healthy watershed and clean urban runoff.

Policies

Specific statements that provide a directive or framework for City decision-making that directly contribute to the attainment of the goal.

Region/Subregion Level

P20.1 Regional Watersheds

Support regional and subregional efforts to support functional and healthy watersheds.

P20.2 Urban Runoff Management

Support regional and subregional efforts to support cleaner and reduced urban runoff.

City Level

P20.3 Product Handling and Disposal Impacts

Support projects, programs, policies and regulations to reduce impacts to watersheds and urban runoff from the improper handling and disposal of commercial products.

P20.3.1 Natural Water System Integrity*

Support projects, programs, policies and regulations that encourage the re-emergence of natural watersheds throughout the city's extent.

Neighborhood/District Level

P20.4 Local Watersheds

Support projects, programs, policies and regulations that support a functional and healthy watershed within neighborhoods and districts.

P20.5 Water Quality of Focus Areas

Support projects, programs, policies and regulations to encourage site and infrastructure improvements within the City's Focus Areas to support cleaner and reduced urban runoff.

Project Level

P20.6 Construction Impacts

Support projects, programs, policies and regulations to reduce impacts to watersheds and urban runoff caused by private and public construction projects.

P20.7 Development Impacts

Support projects, programs, policies and regulations to reduce impacts to watersheds and urban runoff caused by the design or operation of a site or use.

P20.7.1 Incorporate Natural Water Systems in Design Standards*

Support projects, programs, policies and regulations that encourage the preservation of natural creeks and waterways into new projects and developments in Fullerton.

Chapter 17

Air Quality and Climate Change

Fullerton will be a city which is committed to environmental sustainability in planning design, policy and practice.
-The Fullerton Vision

Introduction

As a city located within the Southern California region, Fullerton is aware of and concerned about its air quality. The region is challenged by poor air quality caused by a number of contributing factors, and the City of Fullerton is dedicated to its role in achieving the objectives of regional air quality programs. In addition to general air quality issues, a consensus exists within the scientific and, in general, other sectors, that climate change is occurring. Assembly Bill 32, the Global Warming Solutions Act, requires California to reduce greenhouse gas emissions to 1990 levels by 2020. Although actions taken on a local level cannot resolve this global issue, the City of Fullerton is committed to implementing policies that address energy and resource conservation.

Climate change is expected to either compound the effects or increase the severity of certain hazards in and around Fullerton. For instance, fire hazards may likely become more frequent and destructive due to hotter temperatures and reduced water availability. Flooding may become more widespread since drier ground is less able to absorb urban runoff. Certain diseases and pests may become more prevalent due to longer mating seasons. For many of these hazards, the City's Local Hazard Mitigation Plan (Appendix I) identifies strategies to address some of these potential impacts, increasing overall community resilience.

The Air Quality and Climate Change Element seeks to protect the well-being of Fullerton's citizens through improvement of air quality, and addressing climate change through the integration of a climate action plan.

The following goals and policies are provided to achieve the Fullerton Vision as it pertains to Air Quality and Climate Change.

Overarching Policies

OAP1. Comply with State and Federal laws and regulations while maintaining local control in decision-making.

OAP2. Pursue Federal, State and local funding options to support implementation of The Fullerton Plan.

OAP3. Leverage the advantages and advances of technology.

OAP4. Seek opportunities for increased efficiency and effectiveness.

Purpose

The purpose of the Air Quality and Climate Change Element is to protect the health and welfare of the community through policies aimed at improving air quality, reducing greenhouse gas emissions and working toward reducing the potential adverse effects of climate change.

This Element is not required per California Government Code Section 65302; however, as air quality and climate change are of importance to the community of Fullerton, it is prepared as an optional element per California Government Code Section 65303.

The Climate Action Plan (CAP) will be adopted in conjunction with The Fullerton Plan and EIR. This Chapter contains a summary of the CAP strategies. Refer to the full CAP, provided in as an appendix to the EIR, for additional information.



GOAL 22: Participation in regional efforts to address climate change and its local impacts.

Policies

Specific statements that provide a directive or framework for City decision-making that directly contribute to the attainment of the goal.

Region/Subregion Level

- P22.1 Motor Vehicle-related GHG Emissions**
Support regional and subregional efforts to reduce greenhouse gas emissions associated with transportation through land use strategies and policies, transportation system improvements, and transportation demand management programs.
- P22.2 GHG Emissions from Electrical Generation**
Support regional and subregional efforts to reduce greenhouse gas emissions associated with electrical generation through energy conservation strategies and alternative/renewable energy programs.
- P22.3 GHG Emissions from Water Conveyance**
Support regional and subregional efforts to reduce greenhouse gas emissions associated with water conveyance through water conservation strategies and alternative supply programs.
- P22.4 Solid Waste-Related GHG Emissions**
Support regional and subregional efforts to reduce emissions associated with solid waste through increased recycling programs and reduced waste strategies. (See Chapter 18: Integrated Waste Management for related policies.)

City Level

- P22.5 Technology to Reduce Emissions**
Support projects, programs, policies and regulations to use technology whenever feasible to minimize travel for City meetings and trainings.
- P22.6 GHG Emissions from Waste**
Support projects, programs, policies and regulations to reduce greenhouse gas emissions from waste through improved management of waste handling and reductions in waste generation. (See Chapter 18: Integrated Waste Management for related policies.)

P22.7 Climate Adaptation

Support projects, programs, policies and regulations to address climate change impacts relevant to the City as an inland community, including rises in average and extreme temperature, less annual precipitation, more flooding during El Niño seasons, increased power outages and higher levels of smog.

Neighborhood/District Level

P22.8 Sustainable Communities Strategies

Support projects, programs, policies and regulations to coordinate future community-based planning efforts of the Focus Areas for consistency with the SCAG Sustainable Communities Strategy and Orange County Sustainable Communities Strategy.

P22.8.1 Adopt Neighborhood Plans*

Support projects, programs, policies and regulations to prepare local communities in Fullerton to prepare for the increased risks associated with climate change, such as Community Wildfire Preparedness Plans and evacuation plans in case of flood inundation or dam failure.

Project Level

P22.9 Development

Support projects which voluntarily desire to implement site and/or building design features exceeding minimum requirements to reduce project greenhouse gas emissions.

P22.9.1 Anticipatory Climate Resilient Design*

Support projects that incorporate design elements and standards that anticipate the effects of a warming climate with features that protect against intensified and increased disaster risk.

Chapter 18

Integrated Waste Management

Fullerton will be a city which is committed to environmental sustainability in planning design, policy and practice.
-The Fullerton Vision

Introduction

Integrated waste management is described as a system for reducing, collecting, recycling and disposing of waste products generated by residential, institutional, commercial, and industrial land uses. The City of Fullerton, recognizing the importance of reduce, reuse and recycle wherever possible, continues to pursue the integrated waste management practices that were borne in 1989 when the State Legislature passed AB 939, requiring that cities reduce the amount of waste going to landfill sites.

Hazardous materials in and around the Fullerton community have the potential to be released and endanger public health and safety. Ongoing oil and gas operations in Fullerton may lead to air pollution, oil spills, and groundwater contamination. Other sites use or store chemicals that are dangerous when exposed to humans. Sewer lines or gas pipelines running through Fullerton may also breach during a hazard event and can release their contents underground or on the surface, potentially compromising water supplies or endangering personal health.

The Integrated Waste Management Element seeks to encourage solid waste reduction and provide for the efficient recycling and disposal of refuse and solid waste material without deteriorating the environment.

The following goal and policies are provided to achieve the Fullerton Vision as it pertains to Integrated Waste Management.

Overarching Policies

OAP1. Comply with State and Federal laws and regulations while maintaining local control in decision-making.

OAP2. Pursue Federal, State and local funding options to support implementation of The Fullerton Plan.

OAP3. Leverage the advantages and advances of technology.

OAP4. Seek opportunities for increased efficiency and effectiveness.

Purpose

The purpose of the Integrated Waste Management Element is encourage an environmentally sound waste management system which uses resource recovery, recycling, and source reduction.

This Element is not required per California Government Code Section 65302; however, as integrated waste management is of importance to the community of Fullerton, it is prepared as an optional element per California Government Code Section 65303.

GOAL 23: Safe and efficient management of waste.

Policies

Specific statements that provide a directive or framework for City decision-making that directly contribute to the attainment of the goal.

Region/Subregion Level

P23.1 Regional Waste Management

Support regional and subregional efforts to increase recycling, waste reduction, and product reuse.

P23.1.1 Regional Hazardous Waste Control*

Support regional and subregional efforts to control and limit the amount of hazardous waste that is released into regional air basins and watersheds as well as limiting the transport of hazardous materials along certain corridors only.

City Level

P23.2 Hazardous Waste

Support projects, programs, policies and regulations to promote safe handling and disposal by households, businesses and City operations of solid waste which has specific disposal requirements.

P23.3 Waste Reduction and Diversion

Support projects, programs, policies and regulations to promote practices to reduce the

amount of waste disposed in landfills.

P23.4 Waste Stream Separation and Recycling

Support projects, programs, policies and regulations to expand source separation and recycling opportunities to all households, businesses and City operations

Neighborhood/District Level

P23.5 Recycling Centers

Support projects, programs, policies and regulations to develop neighborhood-serving, State-certified recycling facilities in neighborhoods and districts.

P23.6 Focus Area Waste Management

Support projects, programs, policies and regulations to evaluate ways to increase recycling and product reuse and reduce waste as part of community-based planning of Focus Areas.

Project Level

P23.7 Waste Management

Support projects, programs, policies and regulations to consider project level solid waste management needs at the site and building design stages.

Also see Chapter 17: Air Quality and Climate Change, P21.5 Product Handling and Disposal Impacts, P22.4 Solid Waste GHG Emissions and P22.6 GHG Emissions for Solid Waste.



GOAL 24: Responsible management of open spaces balanced with the healthy functioning of environmental systems.

Policies

*Specific statements that provide a directive or framework for City
decision-making that directly contribute to the attainment of the goal.*

P24.8 Environmentally Sensitive Areas

Support projects, programs, policies and regulations to preserve the environmentally sensitive areas of public open spaces.

P24.9 Passive Open Space

Support projects, programs, policies and regulations to encourage diverse, environmentally-sensitive, passive open spaces.

Neighborhood/District Level

P24.10 Trail Linkages to Open Space

Support projects, programs, policies and regulations to promote recreational trails and the bikeway system to link open spaces to public areas and neighborhoods.

P24.11 Open Space in Focus Areas

Support projects, programs, policies and regulations to evaluate increasing urban and natural open spaces as part of community-based planning of Focus Areas.

P24.11.1 Manage Wildfire Areas*

Support projects, programs, policies and regulations to manage and reduce the risk of wildfire in Very High, High, and Moderate Fire Hazard Severity Zones throughout the City through fire hazard abatement practices.

Project Level

P24.12 Environmental Impact of Support Facilities

Support projects, programs, policies and regulations to limit the construction of facilities in open space areas and to design necessary improvements, such as fire roads, access roads, and parking facilities, to minimize environmental impacts and maintain the visual qualities of the open space.

P24.13 Maintenance of Sensitive Areas

Support programs, policies and regulations to require maintenance of environmentally-sensitive areas by qualified/trained personnel and/or contractors.

P24.13.1 Resilient Management*

Support projects, programs, policies and regulations which increase the resilience of open space and natural areas to increased risk of fire, flood, and geologic hazards.

Chapter 20

Natural Hazards

Fullerton will be a city which values and provides quality public safety services including emergency services, crime prevention and hazard mitigation.
-The Fullerton Vision

Introduction

Consistent with State law, the City of Fullerton is committed to protecting the community from any unreasonable risks associated with the effects of seismically induced events, slope instability leading to mudslides and landslides, subsidence and other known geologic hazards, flooding, and wild land and urban fires.

Severe weather events such as high winds, extreme heat, heavy rains, or tornadoes can cause property damage, lead to disruptions in services and infrastructure, or cause injury or death. Any winds over 47 miles per hour are considered destructive as they can blow over utility poles and launch debris at people caught outside. Extreme heat caused by higher than normal temperatures or high humidity can cause harm to human health. In Fullerton, an extreme heat day is when temperatures reach or exceed 98.4°F. Heavy rains in Fullerton generally occur during the winter season when El Niño weather conditions or atmospheric rivers bring rain from other parts of the world to Southern California. Severe or prolonged heavy rain can lead to flooding in the City, particularly in areas with high amounts of pavement and other impervious surfaces. Floods are measured by their likelihood of occurrence. A 100-year flood has a 1 in 100 chance of occurring during any given year while a 500-year flood has a 1 in 500 chance of occurring during any given year. Fullerton has both 100- and 500-year floodplains as designated by FEMA. Tornadoes are cycling columns that rotate at extremely high speeds ranging from 65 to 200 miles per hour or faster. While tornadoes are rare in California, a few have occurred in or near Fullerton throughout recorded history. All of these events are likely to continue occurring in Fullerton.

The Natural Hazards Element seeks to reduce the potential risk of death, injuries, property damage and economic and social dislocation resulting from natural hazards within or affecting the Fullerton community.

The following goal and policies are provided to achieve the Fullerton Vision as it pertains to Natural Hazards.

Overarching Policies

OAP1. Comply with State and Federal laws and regulations while maintaining local control in decision-making.

OAP2. Pursue Federal, State and local funding options to support implementation of The Fullerton Plan.

OAP3. Leverage the advantages and advances of technology.

OAP4. Seek opportunities for increased efficiency and effectiveness.

Purpose

The purpose of the Natural Hazards Element is to protect life, prevent human injury and reduce the potential for property damage throughout Fullerton.

This Element is required per California Government Code Section 65302.

Associated Tables and Exhibits

Exhibit 26: Local and Regional Fault Lines* (page 207)

Exhibit 27: Liquefaction Zones* (page 209)

Exhibit 27.1: Landslide Potential* (page 209.2)

Exhibit 28: Fire Hazard Zones* (page 211)

Exhibit 29: Dam Failure Inundation Zone* (page 213)

Exhibit 30: FEMA Flood Zones* (page 215)

The City of Fullerton Local Hazard Mitigation Plan (LHMP) has been adopted as part of The Fullerton Plan Safety Element. The Safety Element is divided into two chapters of The Fullerton Plan: Natural Hazards (Chapter 21) and Public Safety (Chapter 10) with additional policies in Chapters 11, 16, 17, 18, and 20. The LHMP evaluates risk to the community from natural and human-caused hazards and includes prioritized mitigation actions.

GOAL 26: Protection of people, natural and built environments and economy from natural hazards.

Policies

Specific statements that provide a directive or framework for City decision-making that directly contribute to the attainment of the goal.

Region/Subregion Level

P26.1 Regional Coordination

Support projects, programs, policies and regulations to coordinate planning for and response to natural disasters with other agencies within the region.

City Level

P26.2 Adequate Emergency Response Infrastructure

Support projects, programs, policies and regulations to prepare to respond to natural disasters to the best of the City's ability.

P26.2.1 Continual Efforts*

Support projects, programs, policies and regulations to continually update and refine the City's Safety Element, Local Hazard Mitigation Plan, Emergency Operations Plan, and other plans as staff may deem relevant with the latest available information on hazards and disaster risk in Fullerton.

Neighborhood/District Level

P26.3 Focus Area Planning

Support projects, programs, policies and regulations to consider natural hazard risks and mitigation as part of community-based planning of Focus Areas.

P26.3.1 Community Hazard Mapping*

Support projects, programs, policies and regulations that help communities and residents of neighborhood blocks understand what kinds of hazards could occur in their area and which areas are the most susceptible to fire, geologic, seismic, and flooding hazards.

Project Level

P26.4 Minimization of Development in High Risk Areas

Support projects, programs, policies and regulations to discourage or limit development within areas that are vulnerable to natural disasters, particularly in areas with recurring damage and/or the presence of multiple natural hazards.

P26.5 Hazard Specific Development Regulations

Support projects, programs, policies and regulations to utilize hazard specific development regulations to mitigate risks associated with identified potential natural hazards, including flooding, wildland fires, liquefaction, and landslides when development does occur.

Also see Chapter 10: Public Safety for related policies.

Exhibit 25.1 - Statewide Drought Conditions from 2013 to 2018

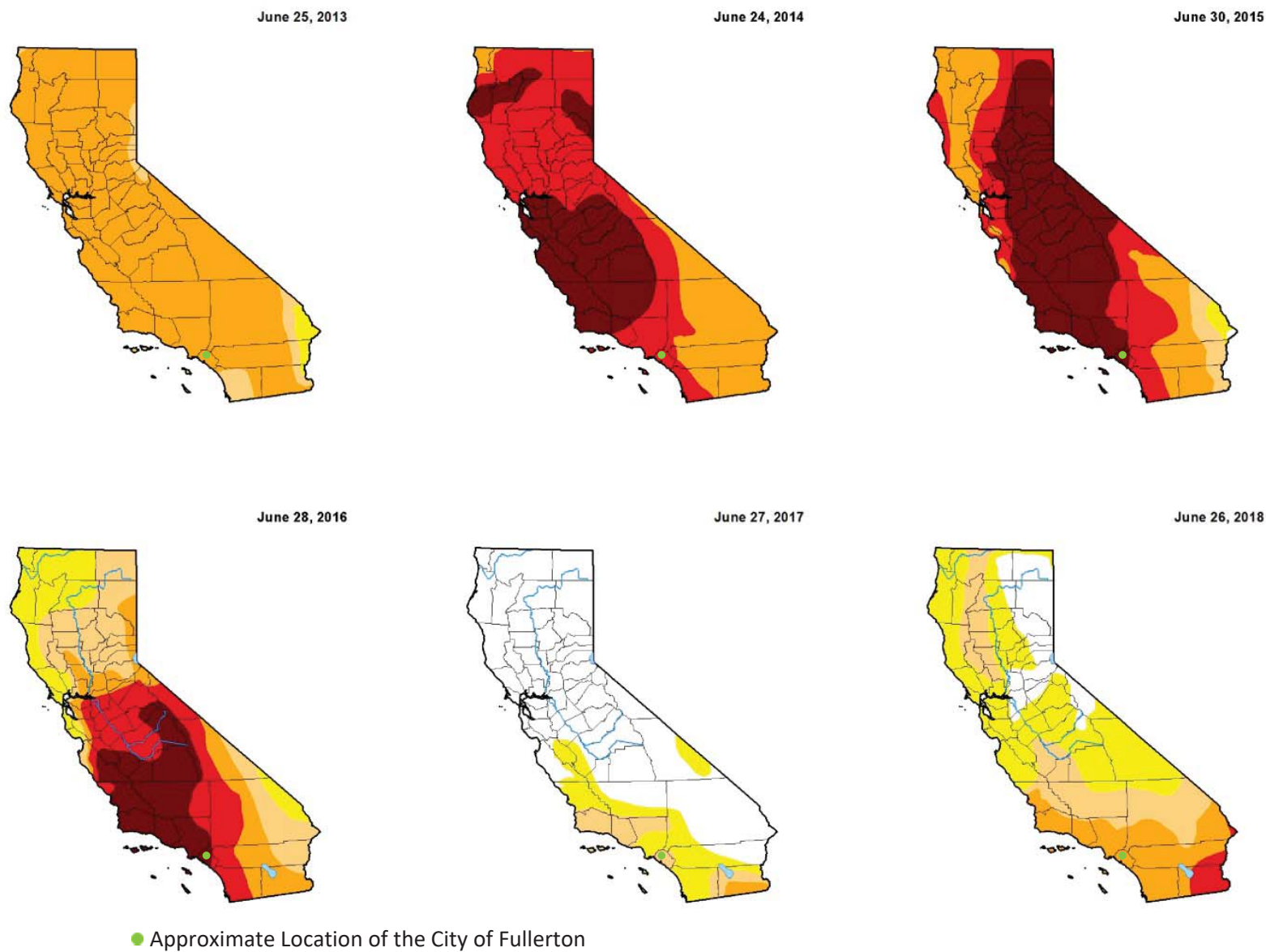


Exhibit 26 - Local and Regional Fault Lines Map

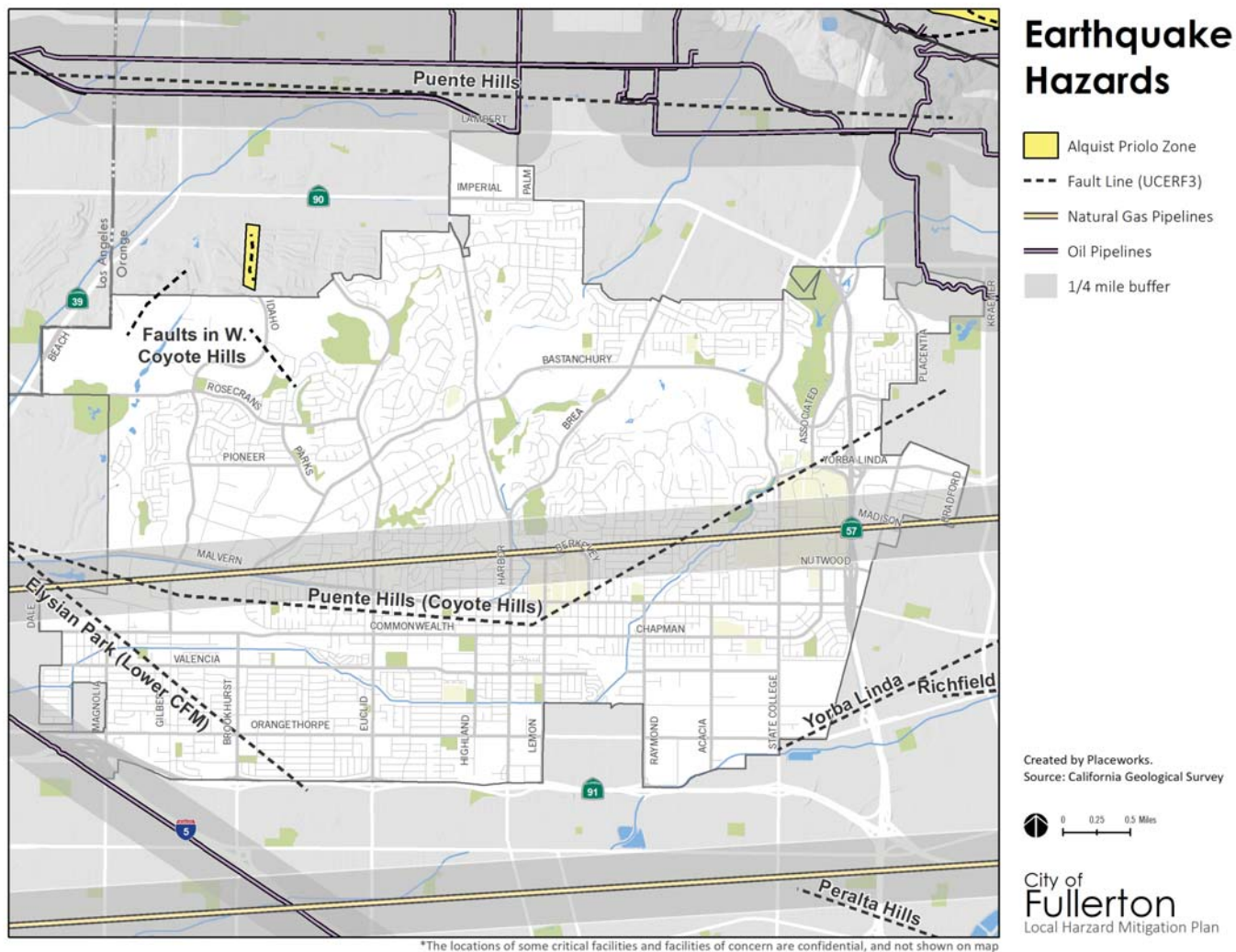


Exhibit 27 - Liquefaction Zones

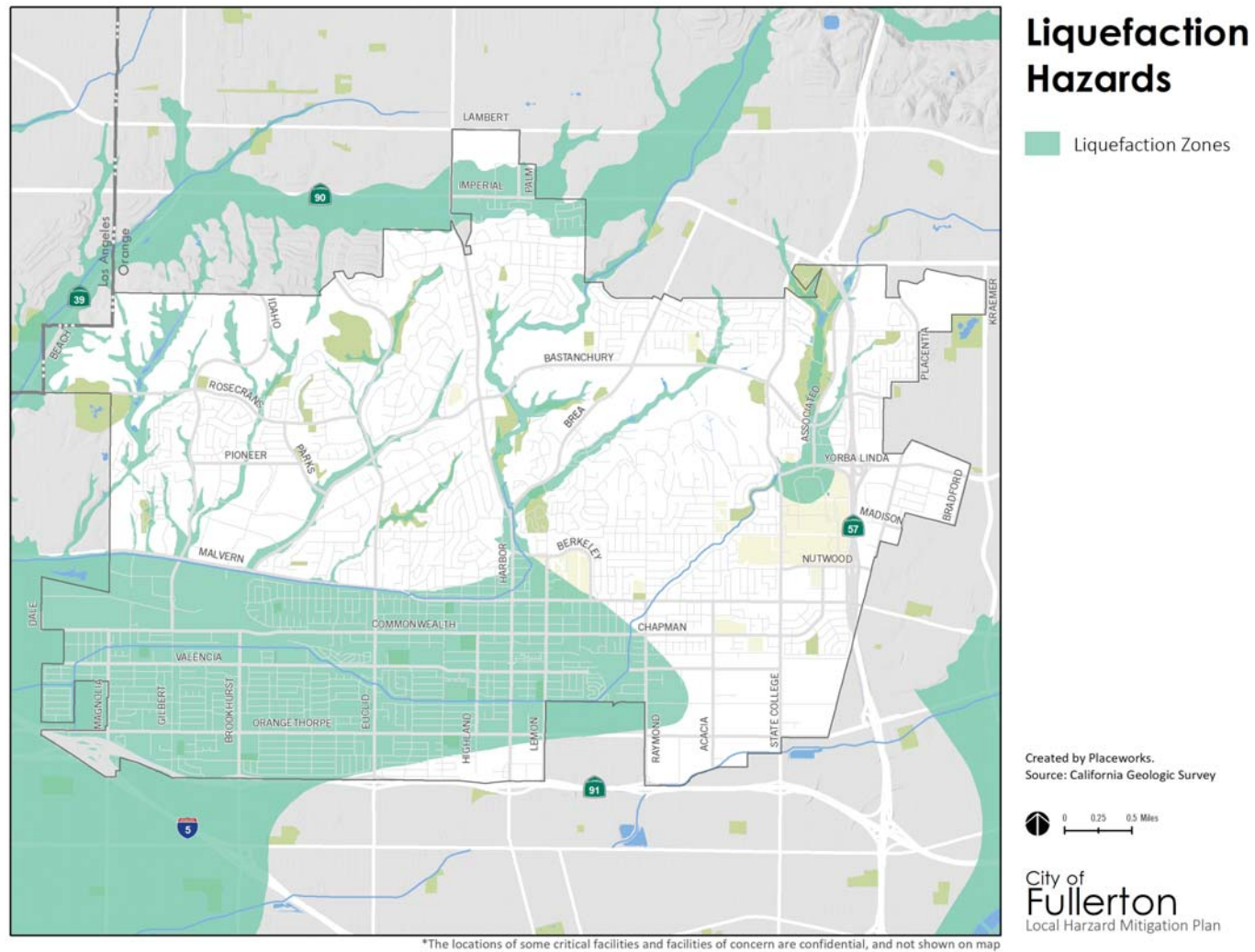


Exhibit 27.1 - Landslide Potential

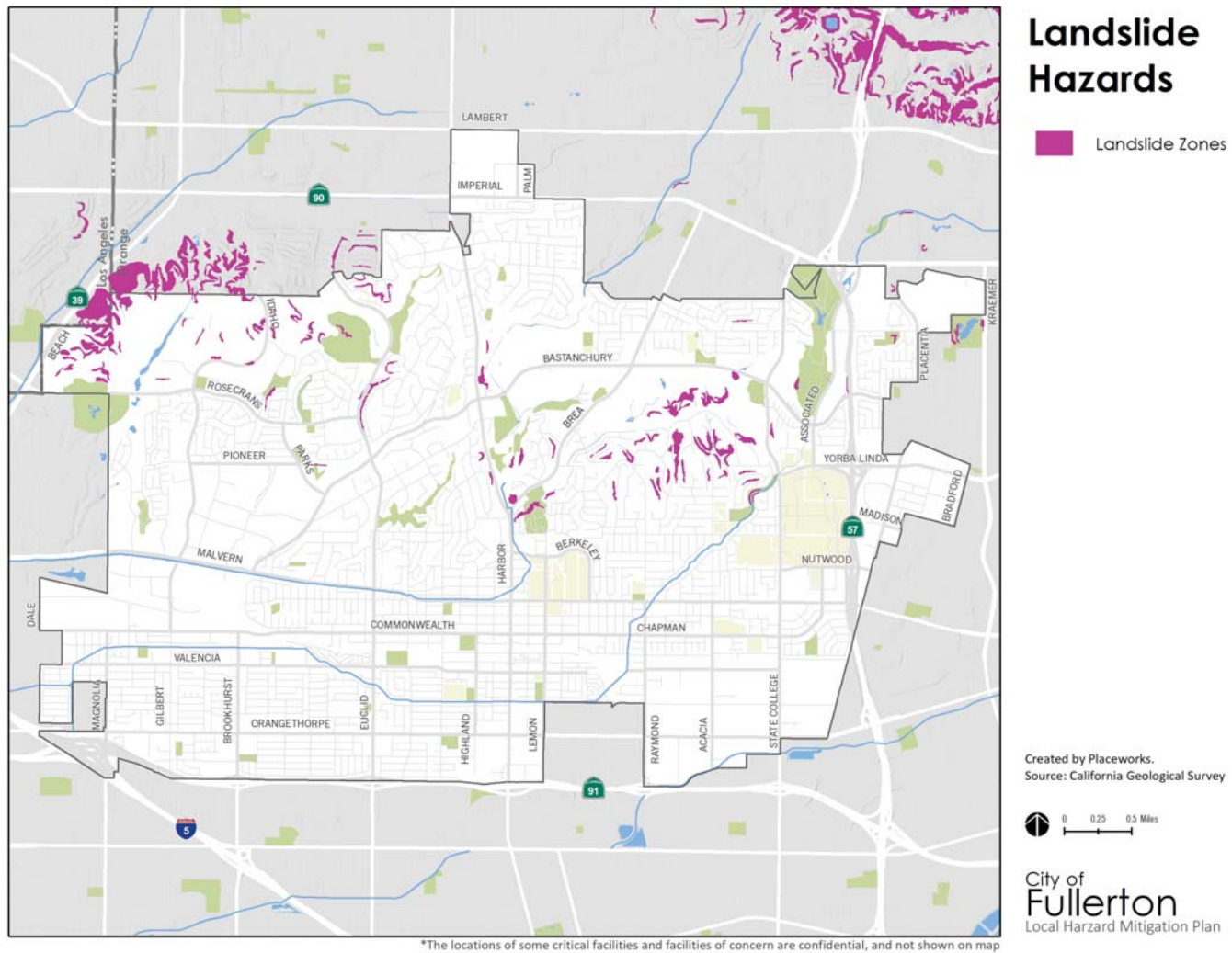


Exhibit 28 - Fire Hazard Zones

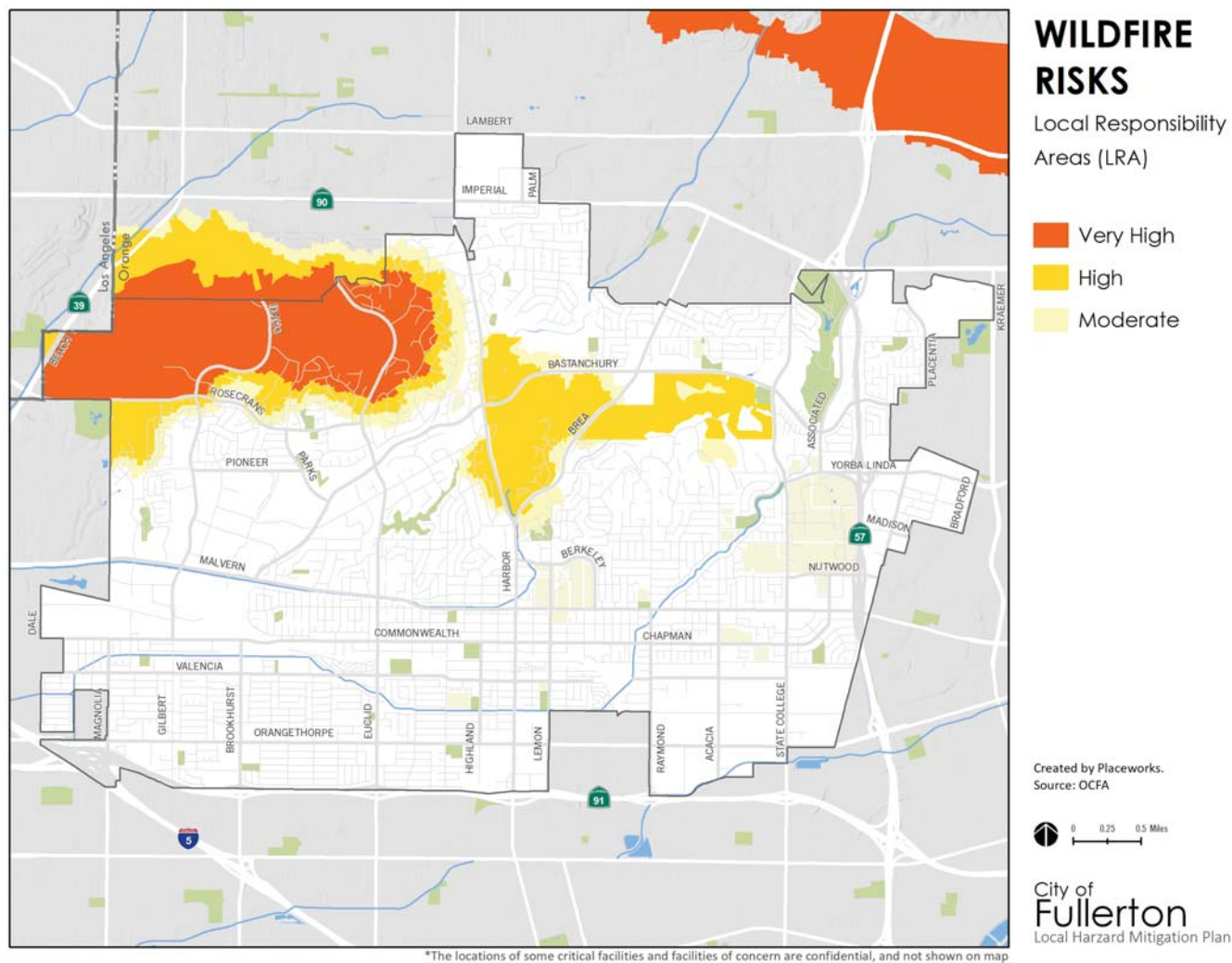


Exhibit 29 - Dam Failure Inundation Zones

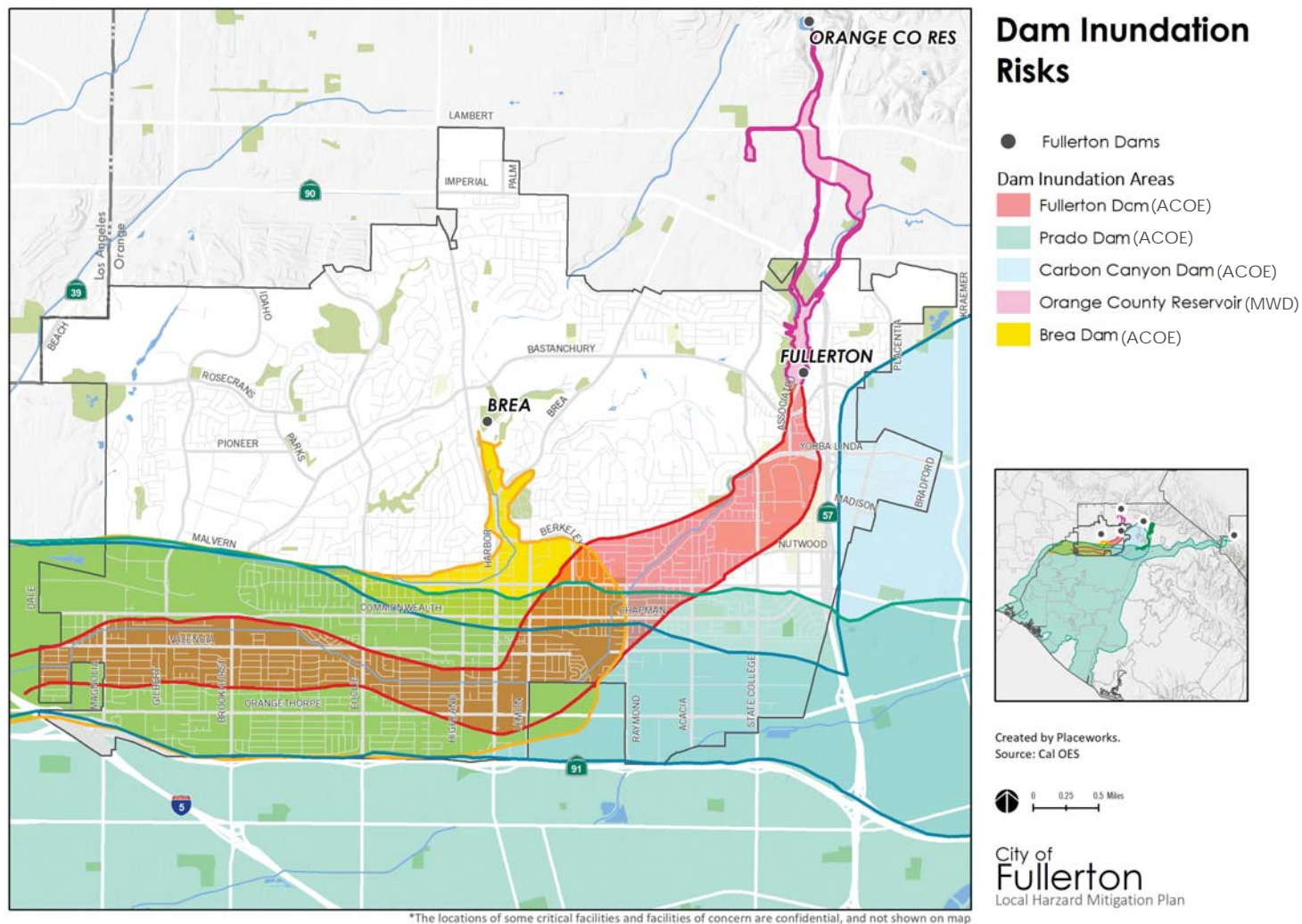
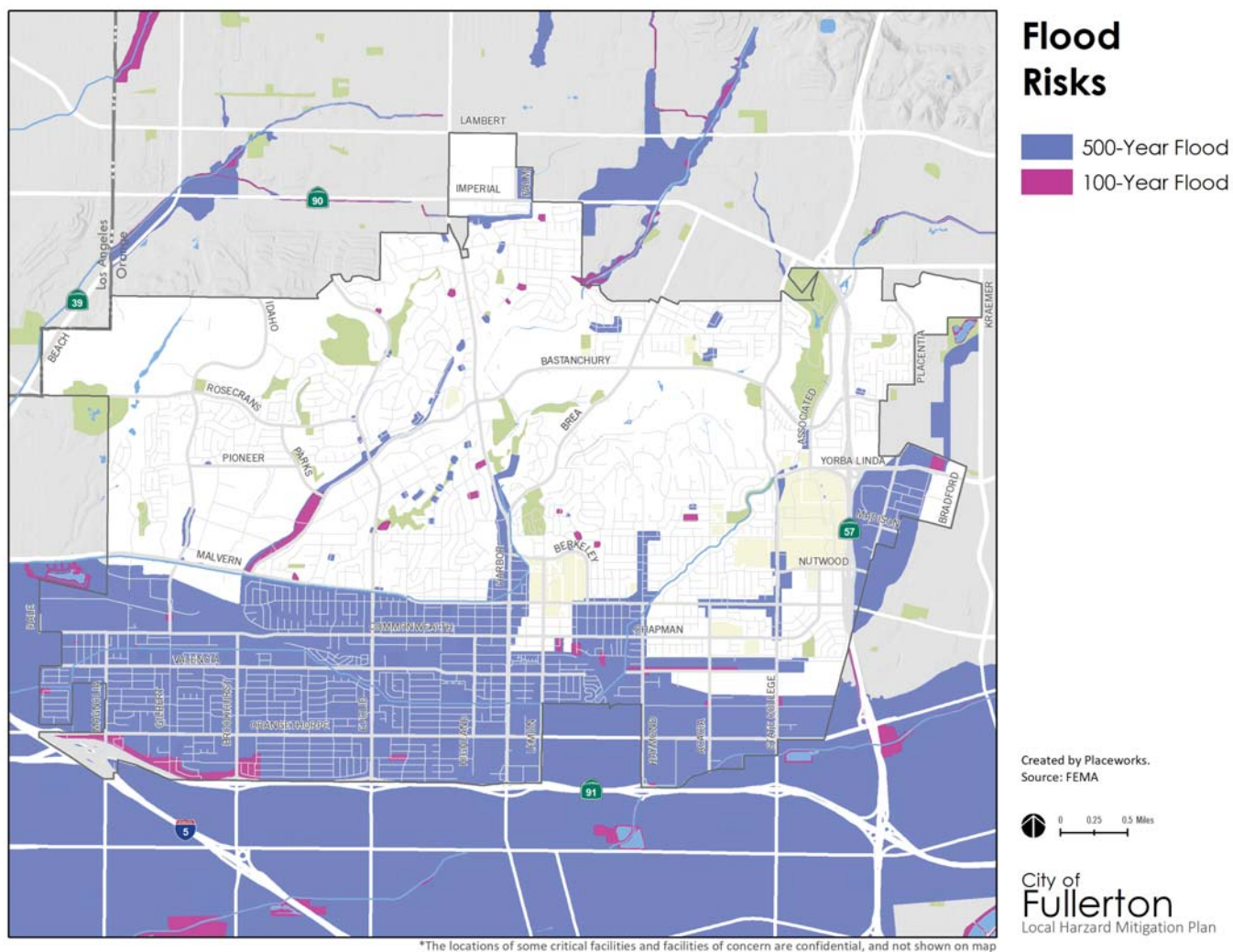


Exhibit 30 - FEMA Flood Zones



Map includes Letters of Map Revision through February 23, 2018