



Agenda Report

Fullerton City Council

MEETING DATE: NOVEMBER 5, 2019

TO: CITY COUNCIL / CITY MANAGER

SUBMITTED BY: KENNETH A. DOMER, CITY MANAGER

PREPARED BY: MEG McWADE, PUBLIC WORKS DIRECTOR
DAVID LANGSTAFF, TRAFFIC ENGINEERING ANALYST

SUBJECT: 2226 NORTH EUCLID STREET – INSTALLATION OF RED CURB

SUMMARY

Confirmation of a Transportation & Circulation Commission recommendation to install 57 feet of red curb in front of Sunrise Senior Living at 2226 North Euclid Street. (Red curb has been installed in advance to address safety concerns.)

RECOMMENDATION

Adopt Resolution No. 2019-XX.

RESOLUTION NO. 2019-XX – A RESOLUTION OF THE CITY COUNCIL OF THE CITY OF FULLERTON, CALIFORNIA, DESIGNATING 57 FEET OF CURB ON THE EAST SIDE OF EUCLID STREET, DIRECTLY IN FRONT OF 2226 NORTH EUCLID STREET, AS A PLACE WHERE VEHICLES ARE PROHIBITED FROM STOPPING ANYTIME

PRIORITY POLICY STATEMENT

This item matches the following Priority Policy Statement:

- Infrastructure and City Assets.

FISCAL IMPACT

There were minimal costs associated with the installation of necessary painted red curb.

DISCUSSION

Background

City Council received a letter from the Executive Director of Sunrise Senior Living expressing concern for driver safety when exiting their property. The concern focused on vehicle approach speeds and sight visibility.

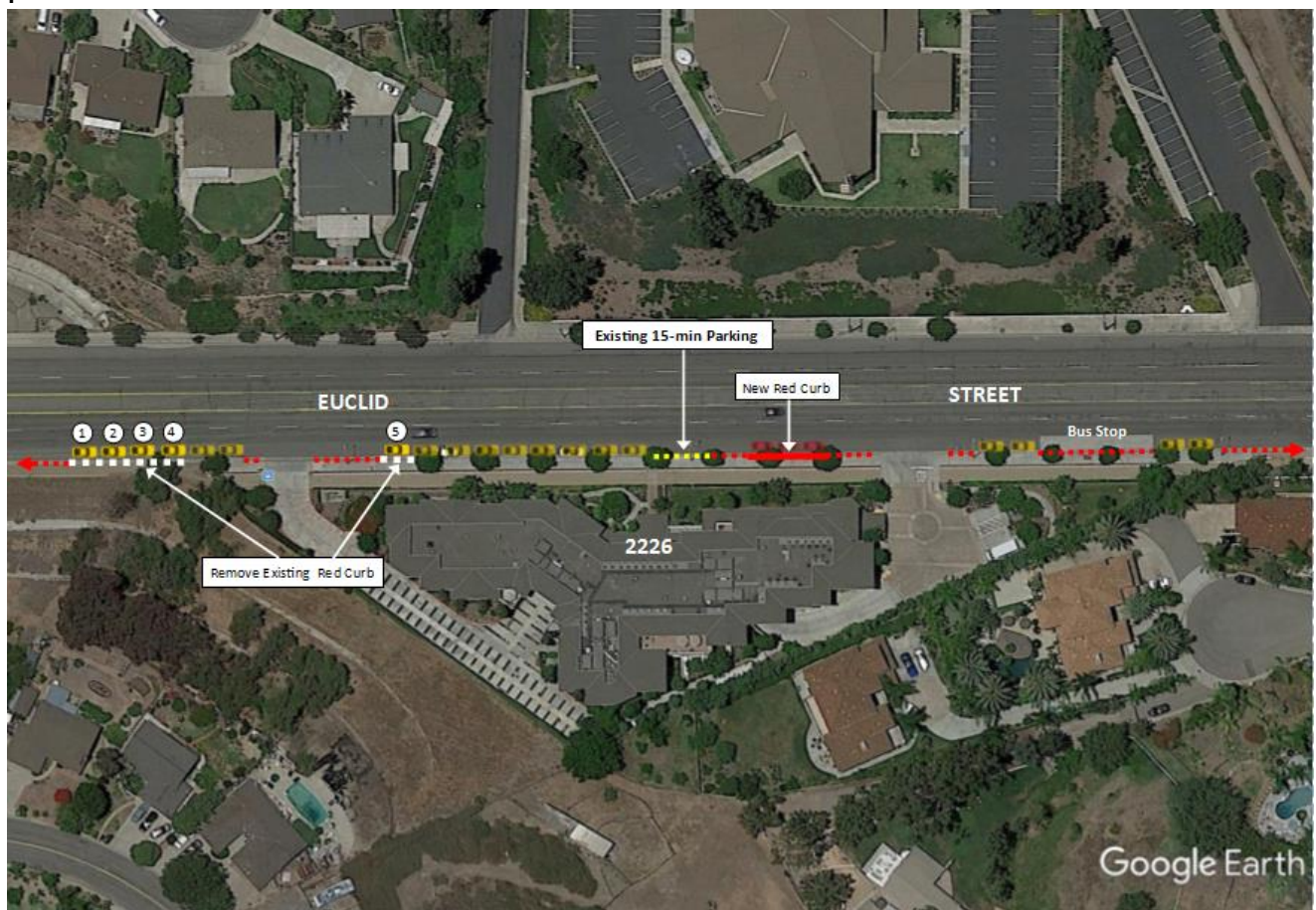
Staff's accident analysis indicated that there were two accidents that occurred within the immediate area of the subject property within the past five years. One was the result of a motorist initiating a U-turn across four lanes from a parked position along the curb on the east side. The other involved a motorist exiting said property in front of a northbound vehicle. Both accidents were caused by failure to yield right-of-way to an oncoming vehicle. Neither was the result of impaired sight distance. That said, Staff conducted a sight visibility study.

Based on a posted speed limit of 50 mph, a driver would need 205 feet of stopping distance to avoid conflict with a vehicle suddenly entering the northbound flow of traffic. This calculation considers both driver reaction time and braking distance required to stop. The safe stopping distance at 55 mph would be 245 feet. Existing conditions allowing on-street parking immediately south of the driveway allow slightly more than 205 feet of adequate sight distance. Based on speeds higher than the posted speed limit, a driver would not have sufficient sight distance to detect oncoming vehicles, depending on their positioning, before entering traffic.

Request to Implement Euclid Street Parking Restriction

In the interest of public safety, Staff found it necessary to immediately paint 57 feet of red curb to remove the on-street parking creating the sight distance impediment. Staff is subsequently requesting City Council's endorsement of the aforementioned action. Exhibit "A" (Attachment 1) is included for reference.

There were some additional items that do not require City Council approval but that were recommended as part of the traffic / parking review for this site. The additional red curb resulted in the loss of three on-street parking spaces. However, when observing existing parking restrictions, Staff determined there was excessive red curb to the south. TC&C authorized Staff to remove the red paint from the curb on the southern end and relocate an existing "No Stopping Anytime" sign to the south to provide for five additional on-street parking spaces. Additionally, Staff is working with Sunrise Senior Living staff for on-site changes to further improve driver line of sight. The recently installed red curb and other parking space/red curb changes are shown on the graphic on the following page.



Attachments:

- Attachment 1 - Resolution No. 2019-XX
- Attachment 2 - T&CC Staff Report