

Prepared for:



# 2025 Urban Water Management Plan & 2025 Water Shortage Contingency Plan

## Public Hearing

May 5, 2026



# — Agenda

- Purpose and Overview of the UWMP
- System Description
- Water Use Characterization and Projections
- Water Conservation Target Compliance
- Water Supply Characterization
- Water Service Reliability and Drought Risk Assessment
- Water Shortage Contingency Planning
- Demand Management Measures

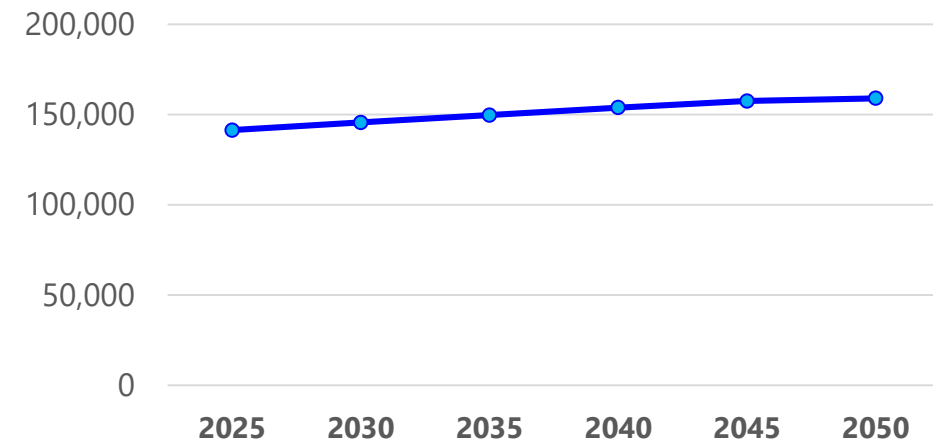
# Purpose and Overview of the UWMP

- 2025 Urban Water Management Plan (UWMP) is prepared to comply with the 1983 UWMP Act and California Water Code.
- This 2025 UWMP was prepared as part of a shared-services agreement with MWDOC along with 22 other partner agencies.
- The 2025 UWMP is an update to the 2020 UWMP and includes the following key elements:
  - » Water use characterization and projections through year 2050
  - » Reporting on water conservation target compliance
  - » Update of the City's existing and planned water supplies
  - » A long-term water supply reliability assessment through year 2050.
  - » The 2025 Water Shortage Contingency Plan (WSCP); an update to the 2020 WSCP
  - » Update of water use efficiency programs from MWDOC and the City

# System Description

- Service Area: 22.3 square miles
- Water System Components
  - » 7 Active wells
  - » 15 reservoirs with a capacity of 67.5 MG
  - » 7 imported water connections to MET
  - » 6 emergency connections with other agencies.
  - » 12 booster pump stations
  - » 424 miles of pipelines

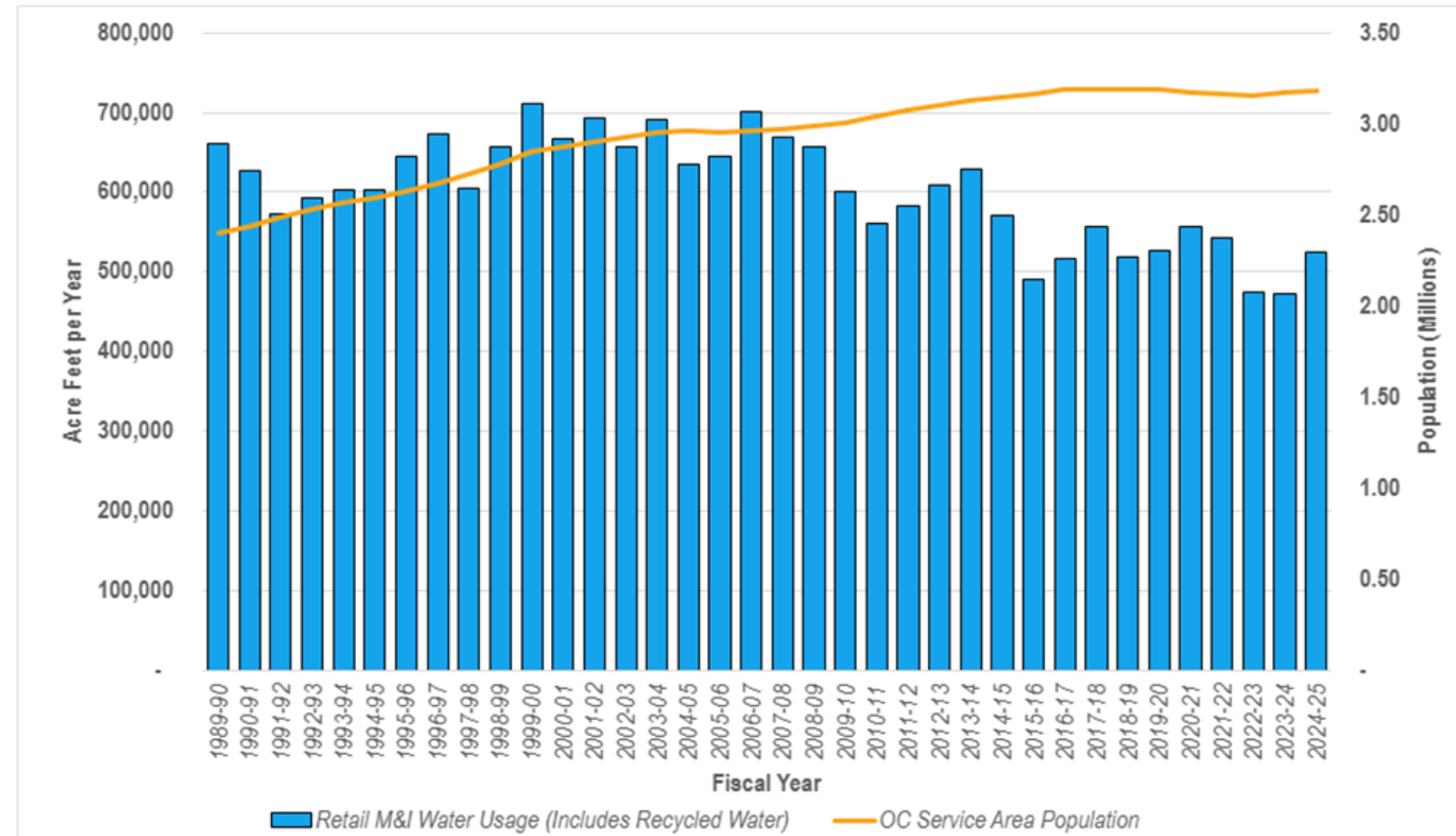
## Population Forecast



- City's Population in 2025: 141,277
- Projected Population 2050: 158,923
- Population Change: +12.5%
- Increase in dwelling units: 3.2%
- RHNA Allocation by 2029: 3,198 units
- Projected number of ADUs: 50

# Water Use Characterization and Projections

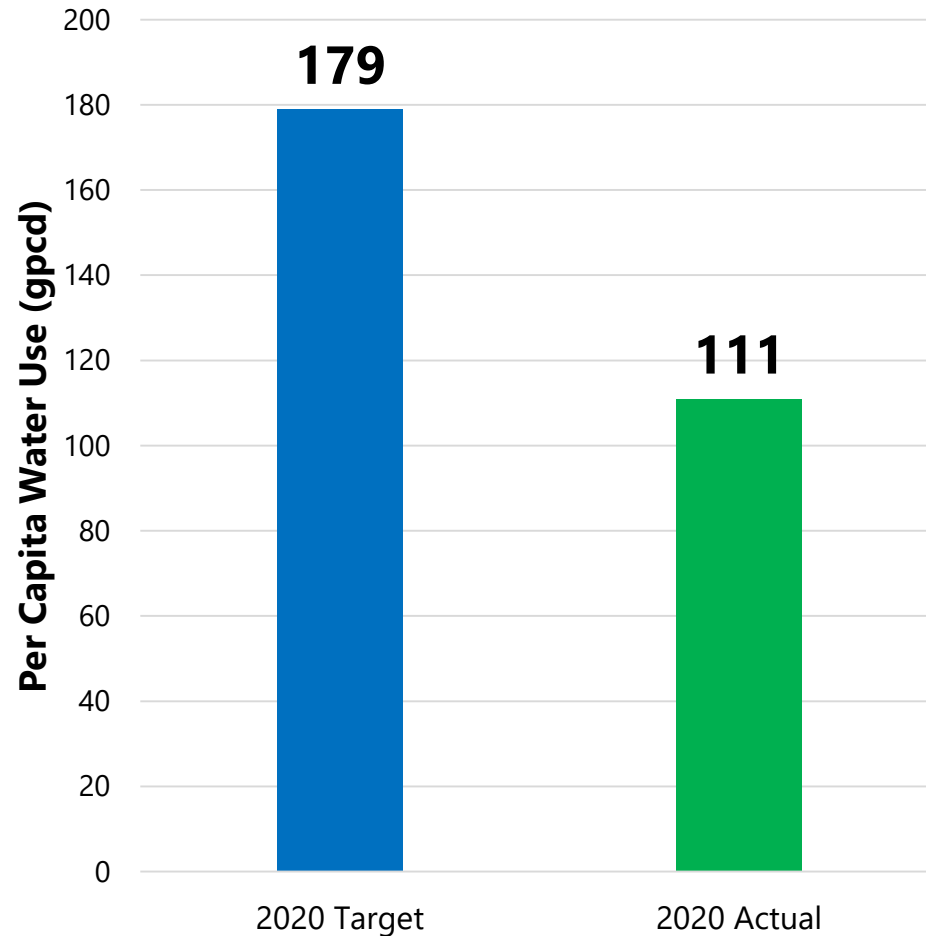
- The City participated in the development of the 2025 Orange County Water Demand Projection Model led by MWDOC.
- City's water use in 2025:
  - » 64% residential
  - » 23% commercial, industrial, and institutional
  - » 6% dedicated irrigation
  - » 8% other
- City's demand projection:
  - » 2025: 22,243 afy
  - » 2050: 21,384 afy
  - » Change: -3.9%



*Total demand in Orange County continues to trend down, while population has increased more than 700,000 (+30%)*

# Water Conservation Target Compliance

- The 2009 Water Conservation Act (SB X7-7) mandated 20% reduction in urban per capita water use by 2020 (aka 20x2020).
- MWDOC's Water Use Efficiency (WUE) program helped meet the goals through the Orange County 20x2020 Regional Alliance.
- Participating retailers, including the City of Fullerton, complied collectively rather than individually.



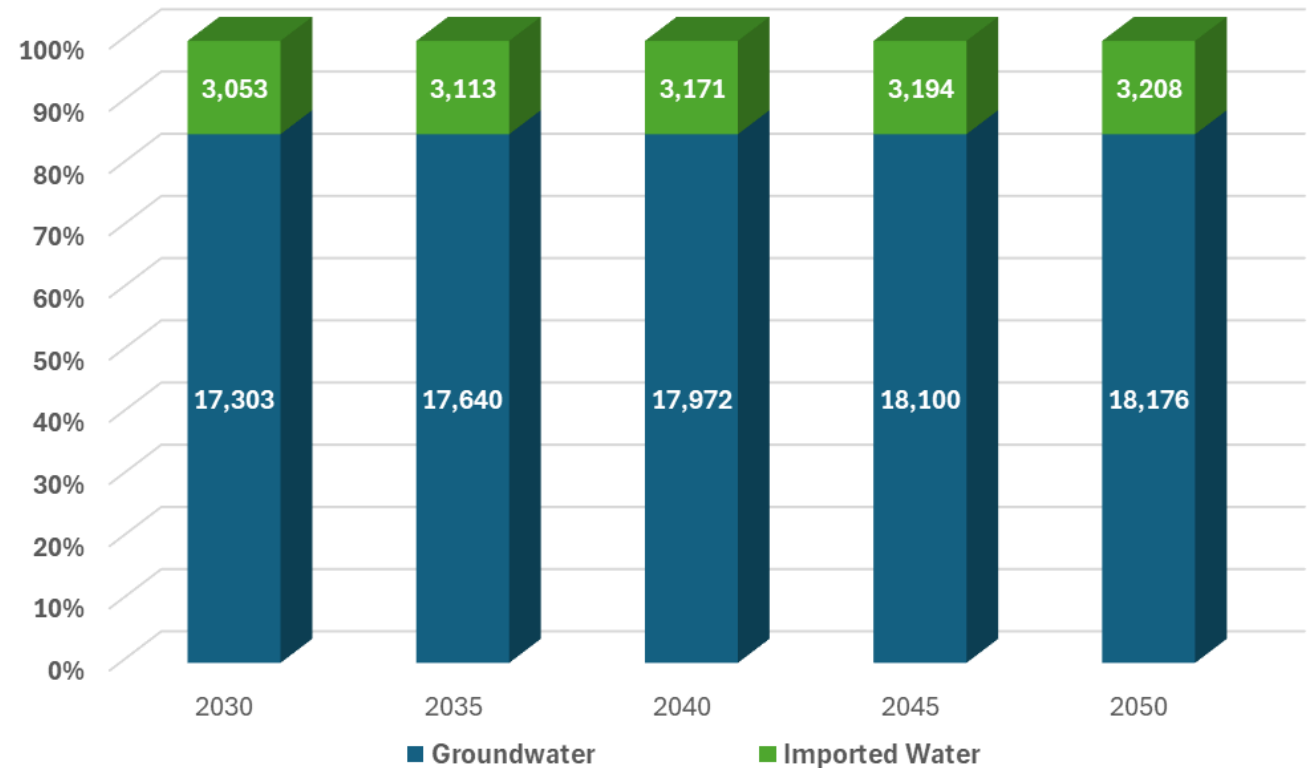
*The City is in compliance with the mandated 20% water use reduction and WUE target.*

# Water Supply Characterization

- City's existing supply mix:
  - » Groundwater: 62.8%
  - » Imported Water: 37.2%
- The City has 6 emergency inter-connections with adjacent agencies
- The City anticipates to replace existing wells soon to maintain water supply needs.

*The City's water supply mix is not projected to change through 2050.*

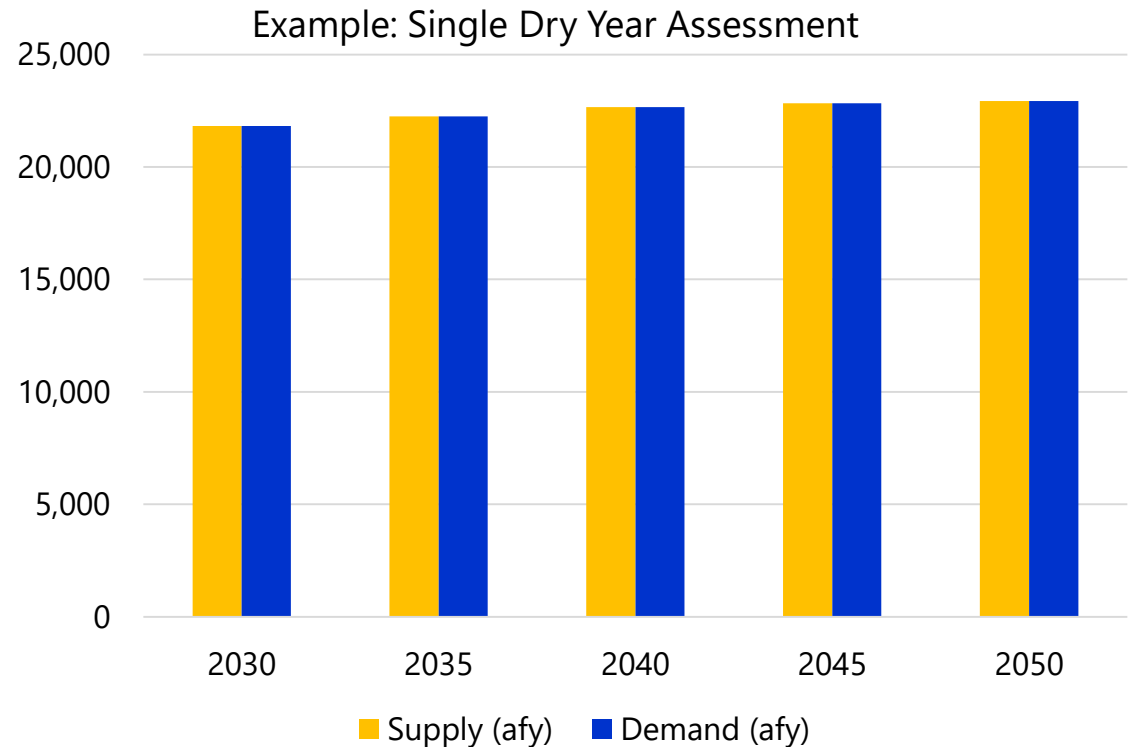
## City's Projected Water Supply Mix



*The City's water supply mix is not projected to change through year 2050*

# Water Service Reliability and Drought Risk Assessment

- **Water Service Reliability** is assessed by comparing the projected water demand with the projected available water supplies
- **Near-Term Assessment** developed for 2026-2030 based on driest 5-year sequence for supply
- **Long-Term Assessment** are developed in 5-year increments from 2030-2050 for three hydrologic conditions:
  - » Normal Water Year
  - » Single Dry Year
  - » Drought lasting 5 Consecutive Dry Years



*The City has long-term supply reliability under normal, single dry year, and 5 consecutive drought years.*

# Water Shortage Contingency Planning

- The WSCP is both a required element of the UWMP as well as a stand-alone document.
- No new requirements were added for the 2025 WSCP
- Key WSCP elements:
  - » Analysis of water supply reliability
  - » Annual water supply and demand assessment
  - » 6 standard water shortage levels
  - » Shortage response actions
  - » Communication protocols

Stage	Shortage Percentage	Shortage Response Actions
<b>0</b>	0% (normal)	<ul style="list-style-type: none"> <li>• City proceed with planned practices</li> <li>• Permanent water waste prohibitions</li> <li>• Non-functional turf ban effective 1/1/2027</li> </ul>
<b>1</b>	Up to 10%	<ul style="list-style-type: none"> <li>• Same as level 0</li> <li>• Up to 10% consumer demand reduction with mandatory level 1 conservation measures</li> </ul>
<b>2</b>	11-20%	<ul style="list-style-type: none"> <li>• Same as level 1</li> <li>• Up to 20% consumer demand reduction with mandatory level 3 conservation measures</li> </ul>
<b>3</b>	21-30%	<ul style="list-style-type: none"> <li>• Same as level 2</li> <li>• Up to 30% consumer demand reduction required</li> <li>• Declare Water Supply Shortage Emergency</li> </ul>
<b>4</b>	31-40%	<ul style="list-style-type: none"> <li>• Same as level 3</li> <li>• Up to 40% consumer demand reduction required</li> </ul>
<b>5</b>	41-50%	<ul style="list-style-type: none"> <li>• Same as level 4</li> <li>• Up to 50% consumer demand reduction required</li> </ul>
<b>6</b>	51-60%	<ul style="list-style-type: none"> <li>• Same as level 5</li> <li>• Up to 60% consumer demand reduction required.</li> </ul>

# Demand Management Measures

- **City's** Water Use Efficiency Program and Rebates 2020-2025:
  - » High Efficiency Clothes Washers
  - » High Efficiency Toilets
  - » Flow Monitoring Devices
  - » Rotating Nozzles
  - » Smart Timers
  - » Rain Barrels
- **MWDOC's** Demand Management Implementation Assistance Programs:
  - » Technical Assistance Program
  - » Meter Area Measurements
  - » Regional Rebate Programs
  - » Local Program Assistance
  - » Water Conservation Research

*The City collaborates with MWDOC to implement water conservation programs to reduce water demands*



Prepared for:



# 2025 Urban Water Management Plan & 2025 Water Shortage Contingency Plan

Public Hearing

**QUESTIONS?**

May 19, 2026

