



CITY OF FULLERTON LEGISLATIVE BODY MEETING PARTICIPATION

Zoom Meeting Details: www.zoom.us/join

Meeting ID: 970 0263 0527 **Telephone Option:** 1-669-900-9128

PUBLIC PARTICIPATION: Members of the public can attend meetings in person or access meetings streamed live online at <https://fullerton.legistar.com>, on Spectrum Cable Channel 3 and AT&T U-Verse Channel 99.

The Council Chamber will have seating available on a first-come, first-served basis for members of the public to attend the meeting in person. All persons visiting City facilities shall observe decorum and health and safety protocols.

PUBLIC COMMENTS: The public may address the legislative body in person or provide public comments remotely by following the *Instructions for Public Comment Using Zoom*.

CORRESPONDENCE: The public can send correspondence to the legislative body regarding items on the agenda by emailing parks@cityoffullerton.com with the subject line "PARKS AND RECREATION COMMISSION MEETING CORRESPONDENCE - ITEM #" (insert the item number relevant to your comment), "PARKS AND RECREATION COMMISSION MEETING CORRESPONDENCE NON-AGENDA ITEM" or by clicking on the eComment link accompanying the agenda posted online at <https://fullerton.legistar.com>. Staff will forward correspondence received to the legislative body. Correspondence is not read at the meeting, however, all correspondence becomes part of the official record of the meeting. Staff posts correspondence online with the meeting's supplemental materials. Contact parks@cityoffullerton.com or call (714)-738-6582 with any questions.

ACCESSIBILITY: If requested, staff will make the agenda and backup materials available in appropriate alternative formats to persons with a disability, as required by Section 202 of the Americans with Disabilities Act of 1990 (42 U.S.C. Sec. 12132) and the federal rules and regulations adopted in implementation thereof. Any person who requires a disability-related modification or accommodation in order to observe and/or offer public comment may request such reasonable modification, accommodation, aid or service by contacting parks@cityoffullerton.com or call (714)-738-6582 no later than 48 hours before the meeting.

INSTRUCTIONS FOR PUBLIC COMMENTS USING ZOOM

The public may remotely participate in the meeting to make oral public comment via computer, smart device or telephone.

Please log on or call in as early as possible to address any technical issues that may occur and ensure you do not miss the time to speak on the desired item.

Follow these steps to log into Zoom from your computer or smart device (Your device must have audio capability to participate.):

Go To: www.zoom.us/join

Enter Meeting ID: 970 0263 0527

Follow these steps to call into Zoom from your telephone:

Dial 1-669-900-9128 and press pound (#)

Enter Meeting ID: 970 0263 0527(and press pound (#))

Optional: You may enter your name when prompted, but this is not required to participate. Staff will remove anyone entering names that violate community standards.

- 1. Use the “raise hand” function to join the queue to speak on the current agenda item** when the Chair calls the item for discussion.

Computer / Smart Device Users: You can find the raise hand option under your participant name.

Telephone Users: Press star-nine (*9) on your phone to raise your hand. Press star-six (*6) to unmute when it is your turn to address City Council.

Lower your hand if you chose not to speak or after you have made your comments by unchecking the raise hand option online.

- 2.** Staff will call your name or the last four digits of your phone number when it is your time to speak.
- 3.** You may state your name and city of residence at the beginning of your remarks for the minutes.
- 4.** Speakers will have up to three minutes to make their remarks.
- 5.** You may log off or hang up after making your comments.

DISCLAIMER: Participant names and/or phone numbers may be visible to all participants. The City records all public meetings.

**CITY OF FULLERTON
PARKS AND RECREATION COMMISSION
MEETING AGENDA
City Council Chambers
303 West Commonwealth Avenue
Fullerton, CA
Monday, January 8, 2024
6:30 p.m.**

Public comment will be allowed on items on this Agenda at the time each item is considered.

Persons addressing the Commission shall be limited to **three** minutes, unless an extension of time is granted by the Chair, subject to approval of the Commission. When any group of persons wishes to address the Commission, it shall be proper for the Chair to request that a spokesman be chosen to represent the group.

CALL TO ORDER

FLAG SALUTE

ROLL CALL

PRESENTATION(S):

*1. DEPARTMENT UPDATE

*2. OUTDOOR GRANT UPDATE

PUBLIC COMMENT

The Commission will hear public comments items NOT on the agenda, but within the subject matter jurisdiction of the Commission, at this time. The Commission may hear public comments for thirty minutes before business items and continue with any remaining public comment following deliberation on the business items. Speakers will have no more than three minutes each to make their comments and may only speak one time during public comment. The Commission may not take action on non-agenda items, except as provided by law.

CONSENT ITEMS (Items 2 – 4)

All matters listed under Consent Calendar are considered routine and enacted by one motion. The Commission will not have separate discussion of these items prior to the time of voting on the motion unless members of the Commission, staff or public request to pull items from the Consent Calendar for further discussion and action.

*2. MINUTES OF THE PARKS AND RECREATION NOVEMBER 2023 MEETING

- *3. PUBLIC WORKS FACILITIES MONTHLY REPORT FOR NOVEMBER AND DECEMBER 2023
- *4. PUBLIC WORKS LANDSCAPE MONTHLY REPORT FOR NOVEMBER AND DECEMBER 2023

REGULAR BUSINESS (Item 5 - 6)

- *5. POOCH PARK UPDATE
- *6. FIELD ALLOCATION ANNUAL REVIEW

STAFF COMMUNICATION / COMMISSIONER COMMENTS

Commissioner comments shall be limited to no more than five minutes per member.

ADJOURNMENT

*Written Material Attached

Any writings or documents provided to a majority of the Parks and Recreation Commission regarding any item on this agenda will be made available for public inspection at the Parks and Recreation Department front counter in the basement of City Hall located at 303 W. Commonwealth Avenue, Fullerton, California during normal business hours.



Agenda Report

Parks and Recreation Commission

MEETING DATE: JANUARY 08, 2024

TO: PARKS & RECREATION COMMISSION

FROM: DAISY PEREZ, DEPUTY CITY MANAGER

PREPARED BY: AMANDA ARBISO, PARKS & RECREATION MANAGER
ECHE ECHEVIRRA, PARKS & RECREATION SUPERVISOR
CAMRYN WORSHAM, PARKS & RECREATION SUPERVISOR
EDGAR ROSALES, SR. ADMINISTRATIVE ANALYST
MIRIAM DUARTE, PARKS & RECREATION SUPERVISOR

SUBJECT: PARKS & RECREATION DEPARTMENT UPDATE

Recreational Classes

- There is still time to register for winter/spring 2024 activities! Our variety of classes range from youth to adults' dance, sports, music, and educational activities.
 - To register go to FullertonEConnect.com or by call (714) 738-6575

Youth Programs

- My Little and Me
 - Art Experiences for toddlers, preschoolers, and their grownups continue second Saturdays throughout 2024. January's project is "Pasta Art."
- Winter Kick Off Craft Day
 - We had a successful first Winter Break Kick-Off Day with 15 kids doing seasonal arts and crafts on December 22.
- Winter Camp Hillcrest
 - Camp Hillcrest Winter Day Camp was held from 12/26 – 12/29 and 1/2 - 1/5 with 60 kids in attendance each week. Total revenue for the two weeks is \$15,378.



Senior Programs

- Senior Grocery Distribution
 - In Partnership with Second Harvest Food Bank receive FREE grocery items on 1/4 and 1/18 from 10:30am – 12pm. No registration or income requirements!
- Themed Trivia: Thursday 1/11 2:00 – 3:00pm
- Loteria: Tuesday 1/2 & 1/16 12:45pm – 1:45pm
- Museums and More: Cultural Excursions for Seniors
 - Environmental Nature Center in Newport Beach on Wednesday, January 10th.
- Discover Fullerton on Foot
 - Civic Center Tour on Saturday, January 20, 2024, from 8:30 – 10:00 am. This program is free and designed for active seniors age 60+.
- North Orange Continuing Education – LEAP Classes
 - Sessions will resume on Friday, January 12th, 2024.
- Fullerton Senior Taxi Program
 - Taxi program for Fullerton residents will provide free trips to the community center, medical appointments, and recreational trips from October 1, 2023, to February 1, 2024. Apply today!

Private Rentals – Fullerton Community Center

- December had 15 private rentals that generated \$31,730 which included weddings, seminars, and much more.
- January currently has 16 private rentals at the center that consist of weddings, baby showers, and more.

Private Rentals - Park Buildings and Pavilions

- December had 6 private park rentals that generated \$1,850 in revenue.
- January currently has 9 park rentals that includes birthdays parties and more. For more information visit www.cityoffullerton/parkrentals

City Events

Fullerton Wedding Show

The 2024 Fullerton Wedding Show will be on Sunday, February 25, 2024. We are now accepting vendor applications, find more information and the application online at www.cityoffullerton.com/cityevents.

Special Events

First Night

The Downtown Fullerton New Year's Eve celebration on December 31st, from 7 pm to Midnight, turned out to be an incredibly enjoyable and beneficial event for the community. The return of this event, after the successful edition in 2019, contributed significantly to fostering a sense of unity within the community. The inclusion of a kid's lane, four stages, and spectacular midnight fireworks show added to the overall enjoyment. The event's success underscored its positive impact, making it a valuable and cherished experience for the entire community.

Youth Sports

- Our permit with the County for Clark Park Sports Fields will continue from January 1 – June 30, 2024. The new requirement will be for us to reach out to all Recreational groups in the Orange County area to offer field spaces for Clark Park Sports Fields. The deadline to submit a request will be on December 11th.
- Field Closures for Soccer Fields at Bastanchury and Fullerton Sports Complex will start December 11th. Fields will remain closed for a duration of 8 weeks.



Parks and Trails

- Staff met with the Pooch Park Foundation to discuss current issues. The heavy winds recently caused a large branch to fall on the fence, A1 fencing will be handling the repairs soon. Signs located around the park need updating which staff is working on.

Special Events

- On December 2nd, the Tree Lighting Ceremony took place at the Downtown Plaza and was a great success! We want to thank Orange County Power Authority for sponsoring this event.

Park Capital Projects (CIP)

Acacia Park playground

- Playground was closed in May due to a variety of issues. The Parks and Recreation Department met with many playground professionals, and it was decided to undergo major updates to the playground.
- Ribbon cutting ceremony for the new Acacia Park Playground occurred on December 2nd at 10am.



Emery Park – Design Phase

- Scope of project includes a new playground with an adjacent picnic area and an ADA-accessible walkway from Sunny Ridge Drive

Bastanchury Park Playground – Now Open

- Scope of project included resurfacing of the playground.



Before



After

Chapman Park – Awaiting bid for Construction Contract

- Scope of project includes ADA compliant restroom renovation.
- Expected completion date: February 2024

Union Pacific Park – Seeking Funding; Design Complete

- Scope of project includes construction of a new park and demolition of current amenities.
- Concept design was approved by Parks and Rec Commission in November meeting.

Independence Park – Design Phase & Community Input

- Current playground was deemed unsafe; demolition of current playground is complete.
- Concept design was reviewed by Parks and Rec Commission.

**CITY OF FULLERTON
PARKS AND RECREATION COMMISSION
DRAFT MINUTES
Council Chambers - Virtual
Monday, December 11, 2023
6:30 PM**

**PARKS AND RECREATION COMMISSION MEETING CANCELLED
DUE TO LACK OF QUORUM**

Present: Chair Kathy Lira, Vice Chair Damion Lloyd, Commissioner Erik Wehn

Absent: Commissioner Jesus Silva, Commissioner Angela Lindstrom, Commissioner Adrian Meza, Commissioner Susan Rhie

Respectfully submitted,

Susie Camarillo

Administrative Assistant Susie Camarillo, Secretary

**CITY OF FULLERTON
PARKS AND RECREATION COMMISSION
DRAFT MINUTES
Council Chambers - Virtual
Monday, November 13, 2023
6:30 PM**

CALL TO ORDER

Chair Kathy Lira called the meeting to order at 6:30 PM.

FLAG SALUTE

Vice Commissioner Lindstrom led the flag salute.

ROLL CALL

Present: Chair Kathy Lira, Commissioner Angela Lindstrom, Commissioner Erik Wehn, Commissioner Adrian Meza, Commissioner Susan Rhie

Absent: Vice Chair Damion Lloyd; Commissioner Jesus Silva

Staff: Recreation Manager Amanda Arbiso, Parks and Recreation Supervisor Eche Echeverria, Parks and Recreation Supervisor Miriam Duarte, Senior Administrative Analyst Edgar Rosales, Deputy City Manager Daisy Perez and Landscape Supervisor Julio Jacobo

1. DEPARTMENT UPDATE

PUBLIC COMMENT

- Janet Whitehead commented on Fullerton Dog Park
- Carl Fairchild commented on the status and funding of the dog park
- Richard Crom commented on Independence Park, specifically the skate park.
- Perla Flores commented on transparency and allocation of funds for the park movement
- Curtis Gamble spoke about homeless issues.
- Curt Johnson recommended that maintenance be continued at Union Pacific Trail and commented on the dog park.
- Maureen Milton commented on upcoming city events.

PUBLIC COMMENT CLOSED

Commissioner Wehn **MADE A MOTION** to agendize the discussion regarding the Pooch Park for a future meeting, **SECONDED** by Commissioner Meza.

VOTE

AYES: Chair Kathy Lira, Commissioner Angela Lindstrom, Commissioner Erik Wehn, Commissioner Susan Rhie, Commissioner Adrian Meza

NOES:

ABSTAIN:

ABSENT: Vice Chair Damion Lloyd, Commissioner Jesus Silva

The MOTION PASSED (5-0-2)

CONSENT ITEMS (Items 2 - 4)

2. MINUTES OF THE PARKS AND RECREATION FOR OCTOBER 2023 MEETING
3. PUBLIC WORKS FACILITIES MONTHLY REPORT FOR OCTOBER 2023
4. PUBLIC WORKS LANDSCAPE MONTHLY REPORT FOR OCTOBER 2023

Commissioner Wehn MADE A MOTION to approve and receive and file items 2 through 4, SECONDED by Commissioner Meza.

VOTE

AYES: Chair Kathy Lira, Commissioner Angela Lindstrom, Commissioner Erik Wehn, Commissioner Susan Rhie, Commissioner Adrian Meza

NOES:

ABSTAIN:

ABSENT: Vice Chair Damion Lloyd, Commissioner Jesus Silva

The MOTION PASSED (5-0-2)

REGULAR BUSINESS (Item 5 - 6)

5. UNION PACIFIC PARK CONCEPT DESIGN

Deputy City Manager Perez gave a presentation on the proposed concept plan for the Union Pacific Park design.

Commissioner Susan Rhie acknowledged the popularity of pickleball on how it has become one of the fastest growing sports, but commented on how the noise level may impact the neighbors. Asked if there are other alternatives, other than pickleball.

Commissioner Angela Lindstrom commented that the new plan will have so many features and inquired how it would be maintained. Also, what is the expected traffic/use of the park and is there adequate parking. Commissioner Lindstrom suggested adding more shrubbery/trees to reduce the noise.

Chair Kathy Lira shared her concern with the pickleball feature because of the noise level it may create for the neighborhood. She also inquired about benches, basketball/pickleball netting and lighting.

Commissioner Adrian Meza asked about the difference between the old park design and the new design presented today. He also inquired on potential funding sources and suggested adding a community kiosk to showcase upcoming events near the pickleball court and shared that a fee could be charged for the community garden based on the size of plot.

Deputy Perez added there was discussions during the ad-hoc committee meetings about incorporating a dog park at this location, however most of the responses from the survey wanted to see more of a neighborhood park.

Commissioner Angela Lindstrom shared that it would be nice to see a program formalized with the city and the supporters of the community garden. What was the biggest obstacle that was faced for this park and what does the schedule look like.

Commissioner Erik Wehn shared that he is excited to see the community garden. He asked if there a plan on how the garden will be organized as far as the different plots, what type of surface would the pickleball courts have and if there would be an issue having these courts offered at no cost vs. the courts at FCC which have a fee.

PUBLIC COMMENT

- Brian Torres expressed his support for the pickleball courts and supports the new park design.
- Resident (no name provided) supported the park design and feels the design was well thought out.
- Bill (no last name provided) shared that pickleball is a great source of exercise for senior citizens.
- Cindy (no last name provided) shared pickleball brings so much joy and will bring business to the City of Fullerton.
- Resident (no name provided) works at YMCA in Fullerton and teaches pickleball to seniors. There is a growing demographic of seniors who are looking to become more active and would like the commissioners to vote yes for this project.
- Greg (no last name provided) shared that it would be great to have dedicated pickleball courts.
- Curtis Gamble shared his supports for the pickleball courts.
- Resident shared an idea to designate a part of the park for an all-ages skateboard area for tiny tots.
- Maureen Milton asked how much time will be given to see if the community garden can become successful before we close it. Can there be a charge for the use of the pickleball courts and lastly is the park going ADA accommodations.

Commissioner Adrian Meza shared that he has had multiple meetings with the Fullerton Senior Club, and they have mentioned a big issue was not getting too many senior citizens together, but pickleball will change that. Commissioner Meza thanked Senior Administrative Analyst Edgar Rosales for his work on getting pickleball into the park design.

Commissioner Angela Lindstrom shared we should have a plan if the design does not work out and how we will address any complaints/concerns.

Chair Kathy Lira shared that she likes pickleball and has no issue with the sport, but in speaking with people in the neighborhood, they have commented about the noise level. Chair Lira would like to also have a back-up plan.

Commissioner Susan Rhie commented that with only two pickleball courts and the growing popularity of the sport, how would that impact the area.

Commissioner Erik Wehn, MADE A MOTION to proceed with the design without connecting the UP Trail. SECONDED by Commissioner Meza

VOTE

AYES: Commissioner Angela Lindstrom, Commissioner Erik Wehn,
Commissioner Adrian Meza

NOES: Chair Kathy Lira, Commission Susan Rhie

ABSTAIN:

ABSENT: Vice Chair Damion Lloyd, Commissioner Jesus Silva

The MOTION PASSED (3-2-2)

6. INDEPENDENCE PARK CONCEPT DESIGN

Senior Administrative Analyst Edgar Rosales presented an update on Independence Park to seek general direction from the commission on the concept design that was prepared by a contracted landscape architect. The proposed concept plan featured pickleball courts, a new adaptive playground, restrooms and larger skatepark which would be relocated to the south side of the park near the south parking lot.

Commission Angela Lindstrom commented on the bigger space for the skate park and what steps would be taken to avoid some of the issues that the current skate park faced. She asked what would the cost be for maintaining the pickleball court, what the potential budget for this project is and added the possibility of looking into EV charging.

PUBLIC COMMENT

- Councilmember Shana Charles spoke as a member of the public and encouraged staff to present Independence Park and Union Pacific Park and Union Pacific Trail (Phases I and II) as a comprehensive plan
- Richard Crom spoke in support of the skatepark
- Resident (no name provided) shared that funds should be dedicated to a well-designed skate park inclusive to all ages.
- Curtis Gamble expressed his support for the Independence Park plan along with the Hunt Park, Dog Park, tiny homes, bike trails.

Commissioner Angela Lindstrom requested that the Independence Park Concept presentation be included in the minutes.

Commissioner Angela Lindstrom shared a website that provides an assessment of city parks and shared that there are two areas in the city that have a need of parks and trails. The areas are in the southwest and southeast. She asked what can be done to improve those deficiencies in those areas.

STAFF COMMUNICATION/COMMISSIONER COMMENTS

Commissioner Angela Lindstrom asked how can staff improve transparency regarding park improvement status.

Deputy City Manager Daisy Perez shared that as part of our Parks and Recreation reorganization, we were able to create a new position for an Event Coordinator-Marketing that will help in this area.

Commissioner Erik Wehn commented on complaints he has received regarding Partner Leagues and that the Fullerton Rangers Signature league would be going away. Commissioner When also asked if policies being followed.

Supervisor Eche Echeveria will look into Partner Leagues issue.

ADJOURNMENT

Meeting adjourned at 8:34 PM.

Respectfully submitted,



Administrative Assistant Susie Camarillo, Secretary



Agenda Report

Parks and Recreation Commission

MEETING DATE: DECEMBER 11, 2023

TO: PARKS AND RECREATION COMMISSION

FROM: MARCELO RIVAS, ADMINISTRATIVE ANALYST I

SUBJECT: NOVEMBER 2023 PUBLIC WORKS/FACILITIES STAFF REPORT

PURPOSE

The purpose of this agenda item is to report to the Commission on the status of the Public Works Department / Building and Facilities Division monthly activities for the month of November 2023.

SUMMARY

Building and Facilities, including Electrical, received and responded to 52 service requests for the month of November 2023. Also included are the summary reports for each building attached showing details of the problems encountered. In addition to the service requests, we perform our daily and weekly work orders.

Service request calls include general repair or replacement of:

- Plumbing
- Electrical
- Pools, Independence and Community Center
- Playground Equipment
- General Maintenance including:
 - Clogged or broken sinks and toilets, broken windows, doors and locks, Light bulbs, plumbing fixtures and accessories, painting, alarms, HVAC, etc.

Request List Report

12/1/2023

7:41 AM

Request #	Category	Address	Status
Created	Problem	Cross Street	
Comments for Work Order			
11-01-2023-000008	Buildings		WO Completed
11/1/2023	Door Issue		
Electric door bent (again) - The front door of the tennis center needs to be adjusted again....it no longer automatically closes on its own. We have to push it manually.			
11-02-2023-000031	Recreational Areas		WO Completed
11/2/2023	Park Equip - Non Tot Lot Repair		
APP ORDER 69701			
Text Note: Facility maintenance request at ford park. Bolts removed from board.			
Art, 714-681-3775			
11-02-2023-000039	Buildings		WO Completed
11/2/2023	Toilet Clog/Leak		
APP ORDER 69695			
Text Note: Toilet clogged and Graffiti 11/01/2023			
11-02-2023-000040	Buildings		WO Completed
11/2/2023	Door Issue		
Lions Field Batting Cage Door - The leftmost batting cage door at Lions Field is broken. Someone broke it off the hinges. Could this please be fixed? Thanks			
11-02-2023-000043	Recreational Areas		WO Completed
11/2/2023	Toilet Clog/Leak		
APP ORDER 69691			
Text Note: Toilet is clogged pacific drive park			
11-02-2023-000063	Buildings		WO Completed
11/2/2023	Electrical Outlets		
The east batting cage over at Lions Field outlet is not working. Please inspect.			
11-03-2023-000081	Recreational Areas		WO Completed
11/3/2023	Park Equip - Non Tot Lot Repair		
APP ORDER 69730			
Text Note: The basketball hoop needs a replacement net.			
11-03-2023-000084	Buildings		WO Completed
11/3/2023	Keys, Locks, Security Rpr		
The latches for the storage bin are broken. Can these be replaced. Storage bin is located in the back of the snack bar building.			
11-03-2023-000095	Buildings		WO Completed
11/3/2023	Lighting - Non St. Lt.		
Hello, please see the attached pictures for all the lights that are out at Hillcrest Park near the recreation buildings and at the Terrace. It is dangerous at night for rentals as well as the parking lot being dark. Please fix them when you can.			
11-06-2023-000112	Buildings		WO Completed
11/6/2023	Door Issue		
Independence Building			
Can we have someone make some repairs to the front doors and the back doors at Independence Building.			
The front doors if someone ends up pulling hard on it its going to break.			
The back door next to the handball courts has some issues staying closed.			
11-06-2023-000130	Buildings		WO Completed
11/6/2023	Pest Control		
Large kitchen by assembly room - please help with pests. Roaches, ants, and spiders in there. Thank you!			
11-06-2023-000131	Buildings		WO Completed
11/6/2023	Door Issue		
Fullerton Sports Complex -We had a possible break in from a homeless. Putting in this request to make sure all doors are working properly. Minimal damage was made on field 1 shed.			
11-06-2023-000133	Recreational Areas		WO Cancelled
11/6/2023	Tot Lot Equip		
APP ORDER 69793			
Text Note: Bastanchury park is a disaster waiting to happen (see picture)			
Lisa, 714-932-1260			

Request List Report

12/1/2023

7:41 AM

Request #	Category	Address	Status
Created	Problem	Cross Street	
Comments for Work Order			
11-06-2023-000136	Recreational Areas		WO Completed
11/6/2023	Lighting - Non St. Lt.		
APP ORDER 69771			
Text Note: no lighting in restroom inside the interior of park at laguna lake			
11-07-2023-000147	Recreational Areas		Assigned to WO
11/7/2023	Spills / Mess / Litter		
APP ORDER 69841			
Text Note: Puddle of water Nicolas park men's restroom			
11-07-2023-000159	Recreational Areas		Assigned to WO
11/7/2023	Lighting - Non St. Lt.		
3 Lights are out near the Elementary School			
Arlene Schneider 714-864-9979			
11-07-2023-000165	Buildings		WO Completed
11/7/2023	Door Issue		
We have a push handle, door bar that is broken in the gym/ hallway entrance by Boys and Girls club. See attached photo. Please check in with Alma or I at the time of service.			
11-07-2023-000166	Buildings		Assigned to WO
11/7/2023	Showers		
We have a shower component in the pool area that is in need of some maintenance. The shower head needs to be replaced because it's rusted. See attached photo. Please check in with Alma or me at the time of service.			
11-08-2023-000191	Recreational Areas		WO Completed
11/8/2023	Keys, Locks, Security Rpr		
We had a break in by the shed over at Woodcrest Park.			
Please inspect immediately.			
Eche Echeverria 714.738.5382			
11-08-2023-000198	Recreational Areas		WO Completed
11/8/2023	Toilet Clog/Leak		
Men's toilet clogged at Lionsfield			
Chester Lee 714-457-4504			
11-09-2023-000223	Recreational Areas		WO Completed
11/9/2023	Spills / Mess / Litter		
APP ORDER 69910			
Text Note: Blood on slide stairs			
Salis018@outlook.com			
11-09-2023-000224	Recreational Areas		Assigned to WO
11/9/2023	Park Equip - Non Tot Lot Repair		
APP ORDER 69913			
Text Note: Hello I've attached photos, of broken playground equipment that can injure children. I've also attached damaged skating ramps that are also dangerous.			
David Thomas			
11-09-2023-000231	Recreational Areas		WO Completed
11/9/2023	Lighting - Non St. Lt.		
APP ORDER 69915			
Text Note: The immediacy light poles around the playground are not turning on with the other ones.			
11-09-2023-000237	Recreational Areas		Assigned to WO
11/9/2023	Park Equip - Non Tot Lot Repair		
A resident called to report a broken playground part at Adlena Park.			
He stated that his child had fallen and received a laceration from a broken playground piece.			
Jose Gutierrez 714-624-3168			
11-13-2023-000279	Buildings		WO Completed
11/13/2023	Misc Office		
One of our curtain pulls by the front entrance is stuck and we would like it adjusted. see attached photo. Its kind of hard to see but there little metal balls that are holding it in place. Please check in with Alma or I at the time of service.			
Joanna Sanchez 714.738.3161			

Request List Report

12/1/2023

7:41 AM

Request #	Category	Address	Status
Created	Problem	Cross Street	
Comments for Work Order			
11-13-2023-000314	Recreational Areas		WO Cancelled
11/13/2023	Lighting - Non St. Lt.		
At the bridge at Acacia Park, resident is requesting to make light brighter or add another light because it's too dark and dangerous.			
Linda 714-882-0589 project by engineering will cover this later in the year			
11-14-2023-000319	Buildings		WO Completed
11/14/2023	Keys, Locks, Security Rpr		
We had an issue locking the facility tonight. The key panel in the photo attached wasn't locking, this panel controls outside doors that lead into the Boys & Girls Club side of the facility which then leads to the rest of the center, courtyard, and gym lobby and is located at the front desk at the community center.			
Staff attempted to turn the key from locked to unlocked position, inserting and removing it multiple times until the doors finally locked. We will keep these doors in a locked position until the panel can be inspected to avoid having issues with securing the facility.			
Miriam Mejia 714.738.6591			
11-14-2023-000328	Recreational Areas		WO Completed
11/14/2023	Keys, Locks, Security Rpr		
The staff working at FSC can't get shed 4 open the lock won't turn can someone take a look and see what's wrong please. Shed next to field 4 at FSC			
James Stellino 714.738.4191			
11-14-2023-000329	Recreational Areas	560 SILVER PINE ST	WO Completed
11/14/2023	Toilet Clog/Leak		
APP ORDER 70084 Text Note: Restroom clogged men's handicap stall			
Isabella Veloz Isabella.veloz@cityoffullerton.com			
11-15-2023-000370	Buildings		WO Completed
11/15/2023	Door Issue		
We would like to get a few door stoppers installed on doors in the Boys and Girls Hallway. Please check in with alma or I at the time of service.			
Joanna Sanchez 714.738.3161			
11-15-2023-000379	Recreational Areas		Assigned to WO
11/15/2023	Lighting - Non St. Lt.		
We got a call that the lights at Adlena are not working. Please inspect.			
11-16-2023-000414	Buildings		Assigned to WO
11/16/2023	Hvac - Problems		
Parks: App-Order 70157: Text Note: Vent was leaking yesterday Set Location 701 S Lemon St ELVIA 714 398 1148			
11-17-2023-000462	Buildings		WO Completed
11/17/2023	Showers		
Can we please have someone check and adjust the temperature in the the Men's gym shower? We have been getting complaints that there is no warm water. We checked in the morning and it was cold.			
Please check in with Alma, Leslie or me at the time of service.			
Joanna Sanchez 714.738.3161			
11-20-2023-000471	Buildings		WO Completed
11/20/2023	Guard Rail/Fence Damage		
Someone report holes in the fence at Independence park. Was wondering if we can fix these thank you.			
James Stellino 714.738.4191			

Request List Report

12/1/2023

7:41 AM

Request #	Category	Address	Status
Created	Problem	Cross Street	
Comments for Work Order			
11-20-2023-000492	Buildings		WO Completed
11/20/2023	Alarms		
It's Shawn Choi with Fullerton Museum Center and the battery in our emergency door is close to dead and it keeps beeping. I was wondering if we could get someone over to replace it.			
11-21-2023-000516	Buildings		WO Completed
11/21/2023	Keys, Locks, Security Rpr		
Shed 4 door lock at FSC: Shed 4 door doesn't open with my staffs FSC key if we can get this lock fix it would be much appreciate it. JAMES 714.738.4191			
11-22-2023-000555	Buildings	W COMMONWEALTH AVE	WO Completed
11/22/2023	Sinks/Faucets		
Can we please have someone check the three sinks in the men's restroom by the main hallway at the Fullerton Community Center, they are all clogged. Please check in with Camryn or me at the time of service. Alma 714-738-5365			
11-27-2023-000572	Buildings		Assigned to WO
11/27/2023	Misc Office		
We were wondering if we can have someone come look at the staff refrigerator? The water dispenser it not working. Please check in with Alma or I at the time of service. Joanna Sanchez 714.738.3161			
11-27-2023-000575	Buildings		WO Completed
11/27/2023	Guard Rail/Fence Damage		
Panorama trail railing broken near neighborhood side. Please repair when available, thank you. Bella Veloz 714.738.5382			
11-27-2023-000588	Buildings	W VALENCIA DR	Assigned to WO
11/27/2023	Misc Office		
Bulletin Board Installation Request/ Janet Evans Swim Complex FAST would like to request assistance with installing an enclosed bulletin board on an exterior wall. You came out to help a couple weeks back but the board was damaged and we had to order another one. The new one is here and ready to be installed at your convenience. This is for the Janet Evans Swim Complex at Independence Park. JOHN NO PHONE # GIVEN			
11-27-2023-000595	Buildings		Assigned to WO
11/27/2023	Drinking Fountain Repair/Maint.		
The Drinking Fountain filter in the hallway between the EV Chargers and the front office has a orange light on. Please replace the filter whenever you get the chance. Thank you! Marcelo, EXT: 2860			
11-27-2023-000601	Recreational Areas		Assigned to WO
11/27/2023	Toilet Clog/Leak		
Fullerton Valencia park - Woman's restroom has a clogged toilet.			
11-27-2023-000615	Recreational Areas		Assigned to WO
11/27/2023	Door Issue		
Hillcrest park bathroom by picnic area - The door at Hillcrest Park restrooms is falling off if we can get this fixed please before it falls on someone.			
11-27-2023-000620	Recreational Areas		Assigned to WO
11/27/2023	Drinking Fountain Repair/Maint.		
APP ORDER 70575 Text Note: The drain next to the drinking/water fountain at Hermosa School Park has been plugged like this for a long time, there is always standing water. The water fountain appears to have a leak, and is rusting/yucky. Bethany, 714-461-9769			
11-27-2023-000630	Buildings	340 W COMMONWEALTH AVE	WO Completed
11/27/2023	Sinks/Faucets		
Can we please request to have both shower handles replaced in the men's restroom by the gymnasium at the Fullerton Community Center. Both handles are broken and we are not able to turn on the water. Please check in with Joanna or me at the time of service. ALMA 714.738.5365			
11-28-2023-000638	Buildings	W VALENCIA DR	Assigned to WO
11/28/2023	Lighting - Non St. Lt.		

Request List Report

12/1/2023

7:41 AM

Request #	Category	Address	Status
Created	Problem	Cross Street	
Comments for Work Order			
Independence Park Lights Two of the lampposts in the park are not working: - 1 to the right of the pool's emergency exit gate (on the park side) - 1 across from that, on the pathway between the gym and where the playground used to be LAUREN 714-773-5788			
11-28-2023-000658	Buildings		Assigned to WO
11/28/2023	Signs		
It's Shawn Choi with the Fullerton Museum Center, our vinyl banner hanger is falling off the wall and I was wondering if we could get someone over to take a look at it and or replace it.			
Shawn Choi shawnchoifmc@gmail.com			
11-28-2023-000664	Buildings	E WILSHIRE AVE	WO Completed
11/28/2023	Sinks/Faucets		
Kitchen floor drain the floor drain in the kitchen has been overflowing I was wondering if we could get someone over to take a look at it. NO CONTACT INFO GIVEN - SHAWN			
11-29-2023-000667	Recreational Areas		WO Completed
11/29/2023	Lighting - Non St. Lt.		
APP ORDER 70655 Text Note: Park lights are out, or need a timer adjustment. Basket ball court and playground are dark at 5:30 p.m.			
Robert Garcia 760-619-5775			
11-30-2023-000699	Recreational Areas		Assigned to WO
11/30/2023	Tot Lot Equip		
APP ORDER 70707 Text Note: Vandalism on bathroom door at Pacific Drive Park- see pic			
Joe Mulleary 714-273-8168			
11-30-2023-000710	Buildings	W VALENCIA DR	New Request
11/30/2023	Electrical Issues		
Pool vacuum vandalism - FAST Maintenance Request The power cord connecting our big yellow pool vacuum to its stand was cut by a trespasser. It is not currently operable as a result. Your assistance would be greatly appreciated. This is for the Janet Evans Swim Complex at Independence Park. There was a note on the vacuum last time you returned it saying to call David at (714) 681-3157 for future vacuum maintenance. I spoke with him yesterday and we are waiting for him to get back to us. I thought I should cover my bases with an email as well. John Jamieson - NO PHONE # GIVEN Aquatics Director, FAST Swimming			
11-30-2023-000717	Recreational Areas		Assigned to WO
11/30/2023	Park Equip - Non Tot Lot Repair		
APP ORDER 70740 Text Note: Wooden bridge on playground broke			
Amanda Merino 859-749-1637			



Agenda Report

Parks and Recreation Commission

MEETING DATE: JANUARY 8, 2024

TO: PARKS AND RECREATION COMMISSION

FROM: MARCELO RIVAS, ADMINISTRATIVE ANALYST I

SUBJECT: DECEMBER 2023 PUBLIC WORKS/FACILITIES STAFF REPORT

PURPOSE

The purpose of this agenda item is to report to the Commission on the status of the Public Works Department / Building and Facilities Division monthly activities for the month of December 2023.

SUMMARY

Building and Facilities, including Electrical, received and responded to 28 service requests for the month of December 2023. Also included are the summary reports for each building attached showing details of the problems encountered. In addition to the service requests, we perform our daily and weekly work orders.

Service request calls include general repair or replacement of:

- Plumbing
- Electrical
- Pools, Independence and Community Center
- Playground Equipment
- General Maintenance including:
 - Clogged or broken sinks and toilets, broken windows, doors and locks, Light bulbs, plumbing fixtures and accessories, painting, alarms, HVAC, etc.

Request List Report

1/2/2024

7:56 AM

Request #	Category	Address	Status
Created	Problem	Cross Street	
Comments for Work Order			
12-04-2023-000066	Buildings	1440 BREA BLVD	WO Completed
12/4/2023	Toilet Clog/Leak		
Lions field 3 men's restroom toilet clogged BELLA 714-738-5382			
12-04-2023-000070	Buildings	1440 BREA BLVD	WO Completed
12/4/2023	Lighting - Non St. Lt.		
Lions Dugout Lights Lions field dugout lights are not turning on for all softball fields. BELLA 714-738-5382			
12-04-2023-000074	Buildings	340 W COMMONWEALTH AVE	WO Completed
12/4/2023	Ceiling Tile		
Ceiling tile We have a loose ceiling tile in one of our main hallways leading towards the Grand Hall. Please check in with Alma or I at the time of service. JOANNA 714.738.3161			
12-05-2023-000102	Buildings		WO Completed
12/5/2023	Pest Control		
Hillcrest Park Recreation Building Rat Problem Staff found rat droppings at the Hillcrest Park Recreation Building. Staff are clearing out the soiled items and having the area deep cleaned. Can we get Orkin to put out traps to help alleviate the problem			
12-05-2023-000103	Buildings	W COMMONWEALTH AVE	WO Completed
12/5/2023	Door Issue		
Amerige Field Lights Room Lock Broken Amerige Field lights Room lock broken. Staff reported lock being jammed with something in keyhole BELLA 714.738.5382			
12-05-2023-000104	Buildings		WO Completed
12/5/2023	Paint		
Hillcrest Park Recreation Building Office We'd like to request that the office on the bottom floor of the Hillcrest Park Recreation Building be painted one solid neutral color. I attached a video of the area. Since we have the rat problem, we completely emptied the office to clean, so all the walls are currently accessible for painting. We will be hosting Winter Camp Hillcrest from 12/26 to 1/05 at that facility, we are hoping for a prompt turnaround before we move our supplies back a couple of days before camp starts. Please let us know if this request is feasible. MIRIAM 714.738.6591			
12-05-2023-000106	Buildings	W COMMONWEALTH AVE	WO Completed
12/5/2023	Ceiling Tile		
Tile at FCC Hello, please fix this tile that is at the Fullerton Community Center near the boardroom. The tile will be in my office. CAMRYN WORSHAM - 714.738.6584			
12-07-2023-000136	Recreational Areas		WO Completed
12/7/2023	Lighting - Non St. Lt.		
APP ORDER 70934 See picture - lights not on Elvia, 714-398-1148			
12-07-2023-000156	Buildings		WO Completed
12/7/2023	Hvac - Problems		
One of the AC vents in the gymnasium at Fullerton Community Center is detached and it can potentially fall, can we please get your assistance on securing it. Also, all the vents are looking very dirty, can we get your help cleaning them.			
12-11-2023-000166	Recreational Areas		WO Completed
12/11/2023	Lighting - Non St. Lt.		
APP ORDER 70992 Text Note: Racquetball Court lights not working at Independence Park. Ethan Reese 714-451-5406			
12-11-2023-000175	Buildings		WO Completed
12/11/2023	Signs		
Scoreboard on Side A, left side, lights are not properly lighting up. Leslie Villela 714.738.6566			

Request List Report

1/2/2024

7:56 AM

Request #	Category	Address	Status
Created	Problem	Cross Street	
Comments for Work Order			
12-11-2023-000177	Buildings		WO Completed
12/11/2023	Lighting - Non St. Lt.		
The light on the northwest corner of the public parking lot off of Commonwealth is not working.			
12-11-2023-000179	Buildings	110 E VALENCIA MESA DR	WO Completed
12/11/2023	Door Issue		
tennis center front door The front door of the tennis center is broken again, this time the handle is snapped off. DAVE MANN (714) 773-5750			
12-11-2023-000194	Buildings	301 N POMONA AVE	Assigned to WO
12/11/2023	Flags		
Parks: App-Order 71051 Text Note: U.S flag torn and faded at Museum Plaza Set Location 301 N Pomona Ave NO PHONE # GIVEN			
12-11-2023-000203	Buildings		WO Completed
12/11/2023	Showers		
Can we please have someone check/adjust the water temperature in the women's gym shower? We have been getting complaints that there is no warm water. We checked in the morning, and it was cold. Please check in with Leslie, Joanna, or me at the time of service.			
Alma Peralta 714.738.5365			
12-13-2023-00026E	Buildings	E WILSHIRE AVE	WO Completed
12/13/2023	Elevator		
Elevator: Our elevator hasn't been working properly as well. We need to basically rev up the button to get it to register for the second floor (video attached). If possible if we could get someone to come look at that as well. Thank you, Shawn Choi shawnchoifmc@gmail.com Fullerton Museum Center			
12-13-2023-00026E	Buildings	E WILSHIRE AVE	WO Completed
12/13/2023	Drains/Gutters		
SHAWN : shawnchoifmc@gmail.com The floor drain in the kitchen has been draining very slow since our opening on Saturday (12/09) and I was wondering if we could get someone over to take a look at it. NO PHONE # GIVEN			
12-13-2023-000274	Buildings		WO Completed
12/13/2023	Door Issue		
Amerige Field Broken Key in Door Can we have someone come to the field and fix the door lock next to the handicap ramp on the community side of the stadium. There is a key broken in the lock BELLA 714.738.5382			
12-14-2023-000277	Buildings		WO Completed
12/14/2023	Hvac - Problems		
Can someone please check the AC in the back offices of the Boys & Girls Club side at the Fullerton Community Center. These are the offices closest to the service gate area. The control panel is showing an error message, attached is a picture for reference. Please contact Joanna Sanchez or me at the time of service.			
Alma Peralta 714.738.5365			
12-14-2023-00030E	Buildings		WO Completed
12/14/2023	Water Fountain Maint		
Can someone please inspect the water fountain in the hallway between the Assembly room and the Manager offices? The water comes out very slowly. Is there a way to make the timer of the water longer for the water bottle filling station? Or at least increase the water pressure? It takes a very long time to fill up. Thanks!			
12-15-2023-00031E	Buildings		WO Completed
12/15/2023	Toilet Clog/Leak		
Hi. The Toilet in the women's handicap restroom by Grand Hall is not flushing. There is nothing in it and it is clean, but the water does not do anything when lever is pushed. Please check in at the time of service. Thank You!			
Joanna Sanchez 714.738.3161			

Request List Report

1/2/2024

7:56 AM

Request #	Category	Address	Status
Created	Problem	Cross Street	
Comments for Work Order			
12-18-2023-000343	Buildings	1440 BREA BLVD	WO Completed
12/18/2023	Urinals		
Lions mens restroom The urinal in the mens restroom at lions field is clogged and overflowing if we can get this fixed please and thank you. JAMES 714.738.4191			
12-18-2023-000366	Recreational Areas	237 E VALLEY VIEW DR	WO On Hold
12/18/2023	Lighting - Non St. Lt.		
APP ORDER 71217 & 71218 Text Note: lights in area out- looks like Hillcrest Park (33.88191882188577,-117.92114540934563) and (33.88173873422591,-117.9221911355853) Todd Warden 714-702-4181			
12-20-2023-000452	Buildings		Assigned to WO
12/20/2023	Toilet Clog/Leak		
Hello, The sink, far left closest to the handicap stall, in the Grand hall women's restroom is clogged. Please check in with Alma or I at the time of service. Thank You.			
Joanna Sanchez 714.738.3161			
12-21-2023-000457	Buildings	801 W VALENCIA DR	Assigned to WO
12/21/2023	Door Issue		
Independence Doors The doors over at Independence Park next to the handle ball courts keep getting open or someone it pulling on them to manage to get those open. We had a burglary alarm on 12/20 around 4:30pm. PD showed up and the doors was left open. Please inspect as soon as possible. Eche 714.738.5335			
12-21-2023-000459	Buildings		Assigned to WO
12/21/2023	Urinals		
Hello, the waterless urinal is plugged up in the MRR near the Manager offices. Please inspect. Thanks!			
12-21-2023-000472	Buildings		Assigned to WO
12/21/2023	Sinks/Faucets		
Can we have someone check a leaking faucet; it is located in the janitors by the main hallway at the Fullerton Community Center. Please check in with Joanna Sanchez or me at the time of service. Photo attached for your reference.			
12-21-2023-000478	Buildings		Assigned to WO
12/21/2023	Ceiling Tile		
I know you guys fixed the ceramic studio roof last year but it has started leaking again. Happy Christmas!!!			



Agenda Report

Parks and Recreation Commission

MEETING DATE: DECEMBER 11, 2023

TO: PARKS AND RECREATION COMMISSION

**FROM: DAVID BISHOP, LANDSCAPE SUPERVISOR
JULIO JACOBO, TREE SUPERVISOR**

**SUBJECT: NOVEMBER 2023 PUBLIC WORKS/ LANDSCAPE STAFF
REPORT**

SUMMARY

The purpose of this agenda item is to report the status of the Public Works Department/ Landscape Division's monthly activities for November 2023.

RECOMMENDATION

Receive and file.

1. Tree Division Update – West Coast Arborists Inc. (WCA) is currently providing contract tree services to the City of Fullerton.
 - Trees pruned: 303
 - Trees/Stumps removed: 65
 - Trees planted: 1
2. Honey Bees – The Department received 2 bee calls during the month of November.
3. Landscape Division completed the following special projects:
 - Sand bag trail heads for rain season
 - Acacia Park preparation for new Tot Lot installation
 - Overseeded baseball and softball field at Sports Complex and Bastanchury Park
 - Added soil and graded down hill to Euclid on Nora Kuttner Trail
 - Adopt a Park projects at Ford, Truslow, and Bastanchury Creek
 - Sunrise Club and LaSierra High School cleanup project at Woodcrest Park

4. Irrigation

- 8 Mainline repairs
- Reroute irrigation at Acacia Park for new Tot Lot

STREET ADDRESS	SIDE	COMMON NAME	WORK TYPE	DATE COMPLETE
2 AMERIGE PARK & COMMUNITY CENTER	PARK-24	DATE PALM	Palm Pruning	11/21/2023
2 AMERIGE PARK & COMMUNITY CENTER	PARK-25	DATE PALM	Palm Pruning	11/21/2023
2 AMERIGE PARK & COMMUNITY CENTER	PARK-29	DATE PALM	Palm Pruning	11/21/2023
2 AMERIGE PARK & COMMUNITY CENTER	PARK-30	DATE PALM	Palm Pruning	11/21/2023
100 AVALON DR	FRONT-1	CANARY ISLAND PINE	Grid Pruning	11/14/2023
105 AVALON DR	FRONT-2	CRAPE MYRTLE	Grid Pruning	11/14/2023
105 AVALON DR	SIDE-1	CRAPE MYRTLE	Grid Pruning	11/14/2023
128 AVALON DR	FRONT-1	CRAPE MYRTLE	Grid Pruning	11/14/2023
128 AVALON DR	FRONT-2	CRAPE MYRTLE	Grid Pruning	11/14/2023
1301 BREA BL	FRONT-16	CRAPE MYRTLE	Grid Pruning	11/21/2023
1301 BREA BL	FRONT-17	CRAPE MYRTLE	Grid Pruning	11/21/2023
1301 BREA BL	FRONT-18	CRAPE MYRTLE	Grid Pruning	11/21/2023
1301 BREA BL	FRONT-19	ROUND-LEAFED SWEETGUM	Grid Pruning	11/21/2023
1301 BREA BL	FRONT-20	CRAPE MYRTLE	Grid Pruning	11/21/2023
1440 BREA BL	FRONT-5	BRADFORD PEAR	Grid Pruning	11/21/2023
1440 BREA BL	FRONT-6	BRADFORD PEAR	Grid Pruning	11/21/2023
1440 BREA BL	FRONT-7	LAVENDER TRUMPET TREE	Grid Pruning	11/21/2023
1440 BREA BL	FRONT-8	LAVENDER TRUMPET TREE	Grid Pruning	11/21/2023
1440 BREA BL	FRONT-9	LAVENDER TRUMPET TREE	Grid Pruning	11/21/2023
1440 BREA BL	FRONT-10	BRADFORD PEAR	Grid Pruning	11/21/2023
1440 BREA BL	FRONT-11	BRADFORD PEAR	Grid Pruning	11/21/2023
1440 BREA BL	FRONT-12	BRADFORD PEAR	Grid Pruning	11/21/2023
1440 BREA BL	FRONT-14	BRADFORD PEAR	Grid Pruning	11/21/2023
1440 BREA BL	FRONT-15	BRADFORD PEAR	Grid Pruning	11/21/2023
1440 BREA BL	FRONT-16	BRADFORD PEAR	Grid Pruning	11/21/2023
1440 BREA BL	FRONT-17	BRADFORD PEAR	Grid Pruning	11/21/2023
1440 BREA BL	FRONT-18	BRADFORD PEAR	Grid Pruning	11/21/2023
1440 BREA BL	FRONT-19	BRADFORD PEAR	Grid Pruning	11/21/2023
1441 BREA BL	FRONT-5	CRAPE MYRTLE	Grid Pruning	11/21/2023
1450 BREA BL	FRONT-1	BRADFORD PEAR	Grid Pruning	11/21/2023
1450 BREA BL	FRONT-2	BRADFORD PEAR	Grid Pruning	11/21/2023
1450 BREA BL	FRONT-3	BRADFORD PEAR	Grid Pruning	11/21/2023
1450 BREA BL	FRONT-4	BRADFORD PEAR	Grid Pruning	11/21/2023
1501 BREA BL	FRONT-1	CRAPE MYRTLE	Grid Pruning	11/21/2023

STREET ADDRESS	SIDE	COMMON NAME	WORK TYPE	DATE COMPLETE
1501 BREA BL	FRONT-4	CRAPE MYRTLE	Grid Pruning	11/21/2023
1901 BREA BL	FRONT-2	CRAPE MYRTLE	Grid Pruning	11/17/2023
1901 BREA BL	FRONT-3	CRAPE MYRTLE	Grid Pruning	11/17/2023
1901 BREA BL	FRONT-4	AFGHAN PINE	Grid Pruning	11/17/2023
1901 BREA BL	FRONT-6	AFGHAN PINE	Grid Pruning	11/17/2023
1901 BREA BL	FRONT-8	AFGHAN PINE	Grid Pruning	11/17/2023
1901 BREA BL	FRONT-10	AFGHAN PINE	Grid Pruning	11/17/2023
1901 BREA BL	FRONT-11	CALIFORNIA PEPPER	Grid Pruning	11/17/2023
1901 BREA BL	FRONT-13	CRAPE MYRTLE	Grid Pruning	11/17/2023
2001 BREA BL	FRONT-1	CRAPE MYRTLE	Grid Pruning	11/17/2023
2001 BREA BL	FRONT-2	CRAPE MYRTLE	Grid Pruning	11/17/2023
2001 BREA BL	FRONT-7	AFGHAN PINE	Grid Pruning	11/17/2023
2001 BREA BL	FRONT-8	AFGHAN PINE	Grid Pruning	11/17/2023
2001 BREA BL	FRONT-9	AFGHAN PINE	Grid Pruning	11/17/2023
2001 BREA BL	FRONT-10	CALIFORNIA PEPPER	Grid Pruning	11/17/2023
2001 BREA BL	FRONT-11	AFGHAN PINE	Grid Pruning	11/17/2023
2001 BREA BL	FRONT-12	AFGHAN PINE	Grid Pruning	11/17/2023
2001 BREA BL	FRONT-13	AFGHAN PINE	Grid Pruning	11/17/2023
2001 BREA BL	FRONT-14	CALIFORNIA PEPPER	Grid Pruning	11/17/2023
2001 BREA BL	FRONT-15	AFGHAN PINE	Grid Pruning	11/17/2023
2001 BREA BL	FRONT-16	CALIFORNIA PEPPER	Grid Pruning	11/17/2023
2001 BREA BL	FRONT-17	AFGHAN PINE	Grid Pruning	11/16/2023
2001 BREA BL	FRONT-18	CALIFORNIA PEPPER	Grid Pruning	11/16/2023
2301 BREA BL	FRONT-1	AFGHAN PINE	Grid Pruning	11/16/2023
2301 BREA BL	FRONT-2	AFGHAN PINE	Grid Pruning	11/16/2023
2301 BREA BL	FRONT-3	AFGHAN PINE	Grid Pruning	11/16/2023
2301 BREA BL	FRONT-4	AFGHAN PINE	Grid Pruning	11/16/2023
2301 BREA BL	FRONT-6	AFGHAN PINE	Grid Pruning	11/16/2023
2301 BREA BL	FRONT-7	CALIFORNIA PEPPER	Grid Pruning	11/16/2023
2301 BREA BL	FRONT-8	AFGHAN PINE	Grid Pruning	11/16/2023
2301 BREA BL	FRONT-10	AFGHAN PINE	Grid Pruning	11/16/2023
2301 BREA BL	FRONT-12	AFGHAN PINE	Grid Pruning	11/16/2023
2301 BREA BL	FRONT-13	CALIFORNIA PEPPER	Grid Pruning	11/16/2023
2301 BREA BL	FRONT-14	CRAPE MYRTLE	Grid Pruning	11/16/2023

STREET ADDRESS	SIDE	COMMON NAME	WORK TYPE	DATE COMPLETE
2301 BREA BL	FRONT-15	CRAPE MYRTLE	Grid Pruning	11/16/2023
2301 BREA BL	FRONT-16	CRAPE MYRTLE	Grid Pruning	11/16/2023
2301 BREA BL	FRONT-17	CRAPE MYRTLE	Grid Pruning	11/16/2023
2301 BREA BL	FRONT-18	CRAPE MYRTLE	Grid Pruning	11/16/2023
2301 BREA BL	FRONT-19	CRAPE MYRTLE	Grid Pruning	11/16/2023
2301 BREA BL	FRONT-20	CRAPE MYRTLE	Grid Pruning	11/16/2023
2301 BREA BL	FRONT-21	CRAPE MYRTLE	Grid Pruning	11/16/2023
2301 BREA BL	FRONT-22	CRAPE MYRTLE	Grid Pruning	11/16/2023
2301 BREA BL	FRONT-23	CRAPE MYRTLE	Grid Pruning	11/16/2023
2301 BREA BL	FRONT-24	CRAPE MYRTLE	Grid Pruning	11/16/2023
2525 BREA BL	FRONT-1	CRAPE MYRTLE	Grid Pruning	11/15/2023
2525 BREA BL	FRONT-2	CRAPE MYRTLE	Grid Pruning	11/15/2023
2525 BREA BL	FRONT-3	CRAPE MYRTLE	Grid Pruning	11/15/2023
2525 BREA BL	FRONT-4	CRAPE MYRTLE	Grid Pruning	11/15/2023
2525 BREA BL	FRONT-5	CRAPE MYRTLE	Grid Pruning	11/15/2023
2525 BREA BL	FRONT-6	CRAPE MYRTLE	Grid Pruning	11/15/2023
2525 BREA BL	FRONT-7	CRAPE MYRTLE	Grid Pruning	11/15/2023
2525 BREA BL	FRONT-8	CRAPE MYRTLE	Grid Pruning	11/15/2023
2525 BREA BL	FRONT-9	CRAPE MYRTLE	Grid Pruning	11/15/2023
2525 BREA BL	FRONT-10	CRAPE MYRTLE	Grid Pruning	11/15/2023
2525 BREA BL	FRONT-11	CRAPE MYRTLE	Grid Pruning	11/15/2023
1201 CENTRAL AV	FRONT-1	QUEEN PALM	Palm Pruning	11/13/2023
2634 CHAPMAN AV /E	FRONT-1	QUEEN PALM	Palm Pruning	11/13/2023
2701 CHAPMAN AV /E	FRONT-2	MEXICAN FAN PALM	Palm Pruning	11/13/2023
2701 CHAPMAN AV /E	FRONT-1	MEXICAN FAN PALM	Palm Pruning	11/13/2023
2751 CHAPMAN AV /E	FRONT-1	MEXICAN FAN PALM	Palm Pruning	11/13/2023
448 CIENAGA DR	FRONT-1	CALIFORNIA FAN PALM	Palm Pruning	11/13/2023
201 COMMONWEALTH AV /E	FRONT-1	CALIFORNIA FAN PALM	Palm Pruning	11/4/2023
201 COMMONWEALTH AV /E	FRONT-2	CALIFORNIA FAN PALM	Palm Pruning	11/4/2023
201 COMMONWEALTH AV /E	FRONT-4	CALIFORNIA FAN PALM	Palm Pruning	11/4/2023
219 COMMONWEALTH AV /E	FRONT-1	CALIFORNIA FAN PALM	Palm Pruning	11/4/2023
219 COMMONWEALTH AV /E	FRONT-3	CALIFORNIA FAN PALM	Palm Pruning	11/4/2023
229 COMMONWEALTH AV /E	FRONT-1	CALIFORNIA FAN PALM	Palm Pruning	11/4/2023
229 COMMONWEALTH AV /E	FRONT-3	CALIFORNIA FAN PALM	Palm Pruning	11/4/2023

CITY OF FULLERTON

Inventory History Report

Date Range: 11/1/2023 - 11/30/2023

Filter: ([WorkGroupMainDesc] LIKE '%trimming%')

Records: 303

STREET ADDRESS	SIDE	COMMON NAME	WORK TYPE	DATE COMPLETE
229 COMMONWEALTH AV /E	FRONT-5	CALIFORNIA FAN PALM	Palm Pruning	11/4/2023
229 COMMONWEALTH AV /E	FRONT-8	MEXICAN FAN PALM	Palm Pruning	11/4/2023
229 COMMONWEALTH AV /E	FRONT-10	CALIFORNIA FAN PALM	Palm Pruning	11/4/2023
229 COMMONWEALTH AV /E	FRONT-12	MEXICAN FAN PALM	Palm Pruning	11/4/2023
229 COMMONWEALTH AV /E	FRONT-14	MEXICAN FAN PALM	Palm Pruning	11/4/2023
609 DOROTHY LN	FRONT-1	CRAPE MYRTLE	Grid Pruning	11/16/2023
613 DOROTHY LN	FRONT-1	CRAPE MYRTLE	Grid Pruning	11/16/2023
619 DOROTHY LN	FRONT-1	HOLLY OAK	Grid Pruning	11/16/2023
657 DOROTHY LN	FRONT-1	CRAPE MYRTLE	Grid Pruning	11/16/2023
665 DOROTHY LN	FRONT-1	CARROTWOOD	Grid Pruning	11/17/2023
600 DRAKE AV	FRONT-2	GUADALUPE PALM	Palm Pruning	11/8/2023
605 DRAKE AV	FRONT-1	GUADALUPE PALM	Palm Pruning	11/8/2023
605 DRAKE AV	SIDE-1	QUEEN PALM	Palm Pruning	11/8/2023
605 DRAKE AV	SIDE-2	QUEEN PALM	Palm Pruning	11/8/2023
605 DRAKE AV	SIDE-3	QUEEN PALM	Palm Pruning	11/8/2023
624 DRAKE AV	FRONT-3	GUADALUPE PALM	Palm Pruning	11/8/2023
2201 EL RANCHO VISTA	SIDE-4	MEXICAN FAN PALM	Palm Pruning	11/13/2023
105 ELSA DR	FRONT-1	CARROTWOOD	Grid Pruning	11/15/2023
105 ELSA DR	FRONT-2	CARROTWOOD	Grid Pruning	11/15/2023
110 ELSA DR	FRONT-1	CARROTWOOD	Grid Pruning	11/15/2023
110 ELSA DR	FRONT-2	CARROTWOOD	Grid Pruning	11/15/2023
110 ELSA DR	FRONT-3	CARROTWOOD	Grid Pruning	11/15/2023
110 ELSA DR	FRONT-4	CARROTWOOD	Grid Pruning	11/15/2023
116 ELSA DR	FRONT-1	INTERIOR LIVE OAK	Grid Pruning	11/15/2023
120 ELSA DR	SIDE-1	CRAPE MYRTLE	Grid Pruning	11/14/2023
122 ELSA DR	FRONT-1	CARROTWOOD	Grid Pruning	11/15/2023
124 ELSA DR	FRONT-1	CRAPE MYRTLE	Grid Pruning	11/15/2023
128 ELSA DR	FRONT-1	CARROTWOOD	Grid Pruning	11/15/2023
134 ELSA DR	FRONT-1	CARROTWOOD	Grid Pruning	11/15/2023
140 ELSA DR	FRONT-1	CARROTWOOD	Grid Pruning	11/15/2023
1315 ELTHAM PL	FRONT-1	KING PALM	Palm Pruning	11/13/2023
1430 ELTHAM PL	FRONT-1	KING PALM	Palm Pruning	11/13/2023
200 EUCLID ST /S	MEDIAN-1	MEXICAN FAN PALM	Palm Pruning	11/4/2023
200 EUCLID ST /S	MEDIAN-2	MEXICAN FAN PALM	Palm Pruning	11/4/2023

STREET ADDRESS	SIDE	COMMON NAME	WORK TYPE	DATE COMPLETE
200 EUCLID ST /S	MEDIAN-3	MEXICAN FAN PALM	Palm Pruning	11/4/2023
200 EUCLID ST /S	MEDIAN-4	MEXICAN FAN PALM	Palm Pruning	11/4/2023
519 FERN DR /W	FRONT-1	QUEEN PALM	Palm Pruning	11/9/2023
519 FERN DR /W	FRONT-2	QUEEN PALM	Palm Pruning	11/9/2023
525 FERN DR /W	FRONT-1	QUEEN PALM	Palm Pruning	11/9/2023
525 FERN DR /W	FRONT-2	QUEEN PALM	Palm Pruning	11/9/2023
531 FERN DR /W	FRONT-1	QUEEN PALM	Palm Pruning	11/9/2023
531 FERN DR /W	FRONT-2	QUEEN PALM	Palm Pruning	11/9/2023
531 FERN DR /W	FRONT-3	QUEEN PALM	Palm Pruning	11/9/2023
535 FERN DR /W	FRONT-2	QUEEN PALM	Palm Pruning	11/9/2023
539 FERN DR /W	FRONT-2	QUEEN PALM	Palm Pruning	11/9/2023
544 FERN DR /W	FRONT-1	QUEEN PALM	Palm Pruning	11/9/2023
544 FERN DR /W	FRONT-2	QUEEN PALM	Palm Pruning	11/9/2023
544 FERN DR /W	FRONT-3	QUEEN PALM	Palm Pruning	11/9/2023
616 FERN DR /W	FRONT-2	QUEEN PALM	Palm Pruning	11/9/2023
628 FERN DR /W	FRONT-2	QUEEN PALM	Palm Pruning	11/13/2023
629 FERN DR /W	FRONT-2	QUEEN PALM	Palm Pruning	11/9/2023
629 FERN DR /W	FRONT-4	QUEEN PALM	Palm Pruning	11/9/2023
632 FERN DR /W	FRONT-1	QUEEN PALM	Palm Pruning	11/9/2023
639 FERN DR /W	FRONT-2	QUEEN PALM	Palm Pruning	11/9/2023
639 FERN DR /W	SIDE-1	QUEEN PALM	Palm Pruning	11/9/2023
639 FERN DR /W	SIDE-2	QUEEN PALM	Palm Pruning	11/9/2023
639 FERN DR /W	SIDE-3	QUEEN PALM	Palm Pruning	11/9/2023
600 GOLDEN AV	FRONT-1	GUADALUPE PALM	Palm Pruning	11/8/2023
604 GOLDEN AV	FRONT-1	QUEEN PALM	Palm Pruning	11/9/2023
609 GOLDEN AV	FRONT-1	GUADALUPE PALM	Palm Pruning	11/8/2023
612 GOLDEN AV	FRONT-1	QUEEN PALM	Palm Pruning	11/9/2023
620 GOLDEN AV	FRONT-1	GUADALUPE PALM	Palm Pruning	11/9/2023
625 GOLDEN AV	FRONT-1	GUADALUPE PALM	Palm Pruning	11/8/2023
641 GOLDEN AV	FRONT-1	GUADALUPE PALM	Palm Pruning	11/9/2023
648 GOLDEN AV	FRONT-1	GUADALUPE PALM	Palm Pruning	11/8/2023
648 GOLDEN AV	FRONT-2	GUADALUPE PALM	Palm Pruning	11/8/2023
662 GOLDEN AV	FRONT-1	GUADALUPE PALM	Palm Pruning	11/8/2023
813 GRANDVIEW AV	FRONT-1	QUEEN PALM	Palm Pruning	11/9/2023

CITY OF FULLERTON			Inventory History Report	
Date Range: 11/1/2023 - 11/30/2023			Filter: ([WorkGroupMainDesc] LIKE '%trimming%')	
Records: 303				
STREET ADDRESS	SIDE	COMMON NAME	WORK TYPE	DATE COMPLETE
813 GRANDVIEW AV	FRONT-3	QUEEN PALM	Palm Pruning	11/9/2023
813 GRANDVIEW AV	FRONT-2	QUEEN PALM	Palm Pruning	11/9/2023
825 GRANDVIEW AV	FRONT-1	QUEEN PALM	Palm Pruning	11/9/2023
825 GRANDVIEW AV	FRONT-2	QUEEN PALM	Palm Pruning	11/9/2023
825 GRANDVIEW AV	FRONT-3	QUEEN PALM	Palm Pruning	11/9/2023
865 GRANDVIEW AV	SIDE-1	QUEEN PALM	Palm Pruning	11/9/2023
200 HARBOR BL /S	MEDIAN-1	MEXICAN FAN PALM	Palm Pruning	11/4/2023
200 HARBOR BL /S	MEDIAN-2	MEXICAN FAN PALM	Palm Pruning	11/4/2023
200 HARBOR BL /S	MEDIAN-3	MEXICAN FAN PALM	Palm Pruning	11/4/2023
200 HARBOR BL /S	MEDIAN-4	MEXICAN FAN PALM	Palm Pruning	11/4/2023
200 HARBOR BL /S	MEDIAN-5	MEXICAN FAN PALM	Palm Pruning	11/4/2023
200 HARBOR BL /S	MEDIAN-6	MEXICAN FAN PALM	Palm Pruning	11/4/2023
200 HARBOR BL /S	MEDIAN-7	MEXICAN FAN PALM	Palm Pruning	11/4/2023
200 HARBOR BL /S	MEDIAN-8	MEXICAN FAN PALM	Palm Pruning	11/4/2023
200 HARBOR BL /S	MEDIAN-9	MEXICAN FAN PALM	Palm Pruning	11/4/2023
200 HARBOR BL /S	MEDIAN-10	MEXICAN FAN PALM	Palm Pruning	11/4/2023
200 HARBOR BL /S	MEDIAN-11	MEXICAN FAN PALM	Palm Pruning	11/4/2023
200 HARBOR BL /S	MEDIAN-12	MEXICAN FAN PALM	Palm Pruning	11/4/2023
200 HARBOR BL /S	MEDIAN-13	MEXICAN FAN PALM	Palm Pruning	11/4/2023
200 HARBOR BL /S	MEDIAN-14	MEXICAN FAN PALM	Palm Pruning	11/4/2023
200 HARBOR BL /S	MEDIAN-15	MEXICAN FAN PALM	Palm Pruning	11/4/2023
200 HARBOR BL /S	MEDIAN-16	MEXICAN FAN PALM	Palm Pruning	11/4/2023
200 HARBOR BL /S	MEDIAN-17	MEXICAN FAN PALM	Palm Pruning	11/4/2023
200 HARBOR BL /S	MEDIAN-18	MEXICAN FAN PALM	Palm Pruning	11/4/2023
200 HARBOR BL /S	MEDIAN-19	MEXICAN FAN PALM	Palm Pruning	11/4/2023
200 HARBOR BL /S	MEDIAN-23	MEXICAN FAN PALM	Palm Pruning	11/4/2023
200 HARBOR BL /S	MEDIAN-24	MEXICAN FAN PALM	Palm Pruning	11/4/2023
200 HARBOR BL /S	MEDIAN-25	MEXICAN FAN PALM	Palm Pruning	11/4/2023
101 HELEN DR	FRONT-1	CARROTWOOD	Grid Pruning	11/16/2023
101 HELEN DR	FRONT-2	CARROTWOOD	Grid Pruning	11/16/2023
101 HELEN DR	SIDE-2	AMERICAN SWEETGUM	Grid Pruning	11/16/2023
106 HELEN DR	FRONT-1	CARROTWOOD	Grid Pruning	11/16/2023
106 HELEN DR	FRONT-2	CARROTWOOD	Grid Pruning	11/16/2023
106 HELEN DR	FRONT-3	CARROTWOOD	Grid Pruning	11/16/2023

STREET ADDRESS	SIDE	COMMON NAME	WORK TYPE	DATE COMPLETE
107 HELEN DR	FRONT-1	CARROTWOOD	Grid Pruning	11/17/2023
113 HELEN DR	FRONT-1	CARROTWOOD	Grid Pruning	11/16/2023
119 HELEN DR	FRONT-1	CRAPE MYRTLE	Grid Pruning	11/16/2023
124 HELEN DR	FRONT-1	CRAPE MYRTLE	Grid Pruning	11/15/2023
125 HELEN DR	FRONT-1	CRAPE MYRTLE	Grid Pruning	11/15/2023
125 HELEN DR	SIDE-1	CARROTWOOD	Grid Pruning	11/15/2023
280 HELEN DR	FRONT-1	CRAPE MYRTLE	Grid Pruning	11/14/2023
280 HELEN DR	FRONT-2	CRAPE MYRTLE	Grid Pruning	11/14/2023
2 INDEPENDENCE PARK	PARK-1	MEXICAN FAN PALM	Palm Pruning	11/20/2023
2 INDEPENDENCE PARK	PARK-2	MEXICAN FAN PALM	Palm Pruning	11/20/2023
2 INDEPENDENCE PARK	PARK-3	MEXICAN FAN PALM	Palm Pruning	11/20/2023
2 INDEPENDENCE PARK	PARK-4	MEXICAN FAN PALM	Palm Pruning	11/20/2023
2 INDEPENDENCE PARK	PARK-51	QUEEN PALM	Palm Pruning	11/20/2023
2 INDEPENDENCE PARK	PARK-53	QUEEN PALM	Palm Pruning	11/21/2023
2 INDEPENDENCE PARK	PARK-54	QUEEN PALM	Palm Pruning	11/21/2023
2 INDEPENDENCE PARK	PARK-55	QUEEN PALM	Palm Pruning	11/21/2023
2 INDEPENDENCE PARK	PARK-56	QUEEN PALM	Palm Pruning	11/21/2023
2 INDEPENDENCE PARK	PARK-57	QUEEN PALM	Palm Pruning	11/21/2023
2 INDEPENDENCE PARK	PARK-58	QUEEN PALM	Palm Pruning	11/20/2023
2 INDEPENDENCE PARK	PARK-59	QUEEN PALM	Palm Pruning	11/20/2023
2 INDEPENDENCE PARK	PARK-60	QUEEN PALM	Palm Pruning	11/20/2023
2 INDEPENDENCE PARK	PARK-116	MEXICAN FAN PALM	Palm Pruning	11/20/2023
2 INDEPENDENCE PARK	PARK-117	MEXICAN FAN PALM	Palm Pruning	11/20/2023
2 INDEPENDENCE PARK	PARK-118	MEXICAN FAN PALM	Palm Pruning	11/20/2023
2 INDEPENDENCE PARK	PARK-119	MEXICAN FAN PALM	Palm Pruning	11/20/2023
2 INDEPENDENCE PARK	PARK-120	MEXICAN FAN PALM	Palm Pruning	11/20/2023
2 INDEPENDENCE PARK	PARK-121	MEXICAN FAN PALM	Palm Pruning	11/20/2023
2 INDEPENDENCE PARK	PARK-122	MEXICAN FAN PALM	Palm Pruning	11/20/2023
2 INDEPENDENCE PARK	PARK-171	MEXICAN FAN PALM	Palm Pruning	11/20/2023
2 INDEPENDENCE PARK	PARK-172	MEXICAN FAN PALM	Palm Pruning	11/20/2023
200 LEMON ST /S	FRONT-9	MEXICAN FAN PALM	Palm Pruning	11/4/2023
200 LEMON ST /S	FRONT-10	MEXICAN FAN PALM	Palm Pruning	11/4/2023
200 LEMON ST /S	FRONT-11	MEXICAN FAN PALM	Palm Pruning	11/4/2023
200 LEMON ST /S	FRONT-12	MEXICAN FAN PALM	Palm Pruning	11/4/2023

STREET ADDRESS	SIDE	COMMON NAME	WORK TYPE	DATE COMPLETE
200 LEMON ST /S	FRONT-14	MEXICAN FAN PALM	Palm Pruning	11/4/2023
200 LEMON ST /S	MEDIAN-13	KING PALM	Palm Pruning	11/6/2023
200 LEMON ST /S	MEDIAN-14	KING PALM	Palm Pruning	11/6/2023
201 LEMON ST /S	FRONT-6	MEXICAN FAN PALM	Palm Pruning	11/6/2023
201 LEMON ST /S	FRONT-7	MEXICAN FAN PALM	Palm Pruning	11/6/2023
201 LEMON ST /S	FRONT-9	MEXICAN FAN PALM	Palm Pruning	11/6/2023
1125 LONGVIEW DR	SIDE-1	HOLLY OAK	Grid Pruning	11/16/2023
1125 LONGVIEW DR	SIDE-2	CARROTWOOD	Grid Pruning	11/16/2023
520 MALVERN AV	FRONT-1	QUEEN PALM	Palm Pruning	11/9/2023
524 MALVERN AV	FRONT-2	QUEEN PALM	Palm Pruning	11/8/2023
525 MALVERN AV	SIDE-1	GUADALUPE PALM	Palm Pruning	11/8/2023
525 MALVERN AV	SIDE-2	GUADALUPE PALM	Palm Pruning	11/8/2023
528 MALVERN AV	FRONT-1	QUEEN PALM	Palm Pruning	11/8/2023
609 MALVERN AV	FRONT-1	QUEEN PALM	Palm Pruning	11/8/2023
609 MALVERN AV	FRONT-2	DATE PALM	Palm Pruning	11/8/2023
617 MALVERN AV	FRONT-1	QUEEN PALM	Palm Pruning	11/8/2023
617 MALVERN AV	FRONT-2	QUEEN PALM	Palm Pruning	11/8/2023
621 MALVERN AV	FRONT-1	QUEEN PALM	Palm Pruning	11/8/2023
643 MALVERN AV	FRONT-1	QUEEN PALM	Palm Pruning	11/8/2023
643 MALVERN AV	FRONT-2	QUEEN PALM	Palm Pruning	11/8/2023
107 MARION BL	FRONT-1	ROUND-LEAFED SWEETGUM	Grid Pruning	11/17/2023
119 MARION BL	FRONT-1	AMERICAN SWEETGUM	Grid Pruning	11/17/2023
129 MARION BL	FRONT-1	AMERICAN SWEETGUM	Grid Pruning	11/17/2023
129 MARION BL	FRONT-2	AMERICAN SWEETGUM	Grid Pruning	11/17/2023
129 MARION BL	FRONT-3	AMERICAN SWEETGUM	Grid Pruning	11/17/2023
139 MARION BL	FRONT-1	AMERICAN SWEETGUM	Grid Pruning	11/17/2023
145 MARION BL	FRONT-1	AMERICAN SWEETGUM	Grid Pruning	11/17/2023
151 MARION BL	FRONT-1	AMERICAN SWEETGUM	Grid Pruning	11/17/2023
157 MARION BL	FRONT-1	AMERICAN SWEETGUM	Grid Pruning	11/16/2023
158 MARION BL	SIDE-2	CRAPE MYRTLE	Grid Pruning	11/14/2023
158 MARION BL	SIDE-1	CRAPE MYRTLE	Grid Pruning	11/14/2023
205 MARION BL	FRONT-1	AMERICAN SWEETGUM	Grid Pruning	11/14/2023
212 MARION BL	FRONT-1	AMERICAN SWEETGUM	Grid Pruning	11/14/2023
217 MARION BL	FRONT-1	AMERICAN SWEETGUM	Grid Pruning	11/14/2023

STREET ADDRESS	SIDE	COMMON NAME	WORK TYPE	DATE COMPLETE
225 MARION BL	FRONT-2	AMERICAN SWEETGUM	Grid Pruning	11/14/2023
300 MARION BL	FRONT-1	CRAPE MYRTLE	Grid Pruning	11/14/2023
300 MARION BL	FRONT-2	CRAPE MYRTLE	Grid Pruning	11/14/2023
116 MELVILLE DR	FRONT-1	CRAPE MYRTLE	Grid Pruning	11/14/2023
119 MELVILLE DR	FRONT-1	CRAPE MYRTLE	Grid Pruning	11/14/2023
119 MELVILLE DR	FRONT-2	CRAPE MYRTLE	Grid Pruning	11/14/2023
120 MELVILLE DR	FRONT-1	CRAPE MYRTLE	Grid Pruning	11/14/2023
132 MELVILLE DR	FRONT-1	CRAPE MYRTLE	Grid Pruning	11/14/2023
133 MELVILLE DR	FRONT-1	CRAPE MYRTLE	Grid Pruning	11/14/2023
133 MELVILLE DR	FRONT-2	CRAPE MYRTLE	Grid Pruning	11/14/2023
137 MELVILLE DR	FRONT-1	CRAPE MYRTLE	Grid Pruning	11/14/2023
142 MELVILLE DR	FRONT-1	CRAPE MYRTLE	Grid Pruning	11/14/2023
1722 PLACENTIA AV /N	SIDE-1	QUEEN PALM	Palm Pruning	11/13/2023
1722 PLACENTIA AV /N	SIDE-3	QUEEN PALM	Palm Pruning	11/13/2023
911 RICHMAN AV /N	FRONT-2	QUEEN PALM	Palm Pruning	11/13/2023
1130 SHEPPARD DR	FRONT-4	AMERICAN SWEETGUM	Grid Pruning	11/17/2023
1201 SHEPPARD DR	FRONT-1	CANARY ISLAND PINE	Grid Pruning	11/17/2023
100 TRUSLOW AV /E	MEDIAN-1	MEXICAN FAN PALM	Palm Pruning	11/4/2023
100 TRUSLOW AV /E	MEDIAN-2	MEXICAN FAN PALM	Palm Pruning	11/4/2023
100 TRUSLOW AV /E	MEDIAN-3	MEXICAN FAN PALM	Palm Pruning	11/4/2023
100 TRUSLOW AV /W	MEDIAN-1	MEXICAN FAN PALM	Palm Pruning	11/4/2023
100 TRUSLOW AV /W	MEDIAN-2	MEXICAN FAN PALM	Palm Pruning	11/4/2023
100 TRUSLOW AV /W	MEDIAN-3	MEXICAN FAN PALM	Palm Pruning	11/4/2023
528 VALLEY VIEW DR /W	FRONT-1	QUEEN PALM	Palm Pruning	11/13/2023
528 VALLEY VIEW DR /W	FRONT-2	QUEEN PALM	Palm Pruning	11/13/2023
600 VALLEY VIEW DR /W	FRONT-1	QUEEN PALM	Palm Pruning	11/13/2023
608 VALLEY VIEW DR /W	FRONT-1	QUEEN PALM	Palm Pruning	11/13/2023
608 VALLEY VIEW DR /W	FRONT-2	QUEEN PALM	Palm Pruning	11/13/2023
620 VALLEY VIEW DR /W	FRONT-1	QUEEN PALM	Palm Pruning	11/13/2023
2001 VIA MIRADA	SIDE-2	QUEEN PALM	Palm Pruning	11/9/2023
2001 VIA MIRADA	SIDE-1	QUEEN PALM	Palm Pruning	11/9/2023

STREET ADDRESS	SIDE	COMMON NAME	WORK TYPE	DATE COMPLETE
517 AMERIGE AV /W	FRONT-1	CAMPHOR TREE	Tree and Stump Removal	11/22/2023
145 ASH AV /E	SIDE-2	STUMP	Stump Only Removal	11/7/2023
2509 ASH AV /W	FRONT-1	CHINESE ELM	Tree and Stump Removal	11/15/2023
218 BERKELEY AV /N	FRONT-1	STUMP	Stump Only Removal	11/6/2023
119 BROOKDALE PL /W	FRONT-1	SOUTHERN MAGNOLIA	Tree Only Removal	11/14/2023
2542 CAMINO DEL SOL	FRONT-2	AMERICAN SWEETGUM	Tree and Stump Removal	11/17/2023
2627 CAMINO DEL SOL	FRONT-1	AMERICAN SWEETGUM	Tree and Stump Removal	11/13/2023
2690 CAMINO DEL SOL	FRONT-3	AMERICAN SWEETGUM	Tree and Stump Removal	11/13/2023
2690 CAMINO DEL SOL	FRONT-4	AMERICAN SWEETGUM	Tree and Stump Removal	11/13/2023
801 CASA BLANCA DR	FRONT-2	CHINESE ELM	Tree and Stump Removal	11/13/2023
811 CASA BLANCA DR	FRONT-1	CHINESE ELM	Emer Tree & Stump Rmvl Backup - Crew	11/1/2023
415 CIENAGA DR	FRONT-1	STUMP	Stump Only Removal	11/7/2023
303 COMMONWEALTH AV /W	FRONT-3	STUMP	Stump Only Removal	11/7/2023
303 COMMONWEALTH AV /W	FRONT-6	STUMP	Stump Only Removal	11/7/2023
1001 CRYSTAL PL	FRONT-2	AFGHAN PINE	Tree and Stump Removal	11/15/2023
1501 EL PASO LN	SIDE-1	AMERICAN SWEETGUM	Tree and Stump Removal	11/13/2023
2431 EL RANCHO VISTA	FRONT-1	AUSTRALIAN WILLOW	Tree and Stump Removal	11/13/2023
1620 FAIRGREEN DR	FRONT-1	FERN PINE	Tree and Stump Removal	11/17/2023
1620 FAIRGREEN DR	SIDE-1	FERN PINE	Tree and Stump Removal	11/17/2023
1620 FAIRGREEN DR	SIDE-2	FERN PINE	Tree and Stump Removal	11/17/2023
1212 FERN DR /E	FRONT-1	FERN PINE	Tree & Stump Removal Backup - Crew	11/3/2023
658 FERN DR /E	SIDE-2	STUMP	Stump Only Removal	11/6/2023
2 FORD PARK	PARK-43	AUSTRALIAN WILLOW	Tree and Stump Removal	11/13/2023
1219 GAGE AV	SIDE-1	HOLLY OAK	Tree and Stump Removal	11/15/2023
1346 GAGE AV	FRONT-1	SOUTHERN MAGNOLIA	Tree and Stump Removal	11/15/2023
710 HARMONY LN	FRONT-1	EVERGREEN PEAR	Tree and Stump Removal	11/14/2023
710 HARMONY LN	FRONT-2	EVERGREEN PEAR	Tree and Stump Removal	11/14/2023
642 HAWTHORNE AV	FRONT-1	SOUTHERN MAGNOLIA	Tree and Stump Removal	11/16/2023
436 KNEPP AV	FRONT-1	DEAD TREE	City Crew Removal	11/27/2023
2 MAIN PLANT	FRONT-6	SHAMEL ASH	Tree Only Removal	11/27/2023
2 MAIN PLANT	FRONT-8	CARROTWOOD	Tree and Stump Removal	11/27/2023
2345 MESA VERDE	FRONT-1	ORNAMENTAL PEAR	Tree and Stump Removal	11/20/2023
3000 MILAGRO WY	FRONT-1	CAJEPUT TREE	Tree and Stump Removal	11/20/2023
2251 MORELIA AV	FRONT-1	DEAD TREE	City Crew Removal	11/2/2023

STREET ADDRESS	SIDE	COMMON NAME	WORK TYPE	DATE COMPLETE
907 MOUNTAIN VIEW PL /N	FRONT-1	JACARANDA	Tree and Stump Removal	11/22/2023
2840 MYSTIC AV	FRONT-1	JACARANDA	Tree and Stump Removal	11/22/2023
400 NEWELL PL	FRONT-3	ARIZONA ASH	Tree and Stump Removal	11/14/2023
1932 OAK AV	FRONT-1	STUMP	Stump Only Removal	11/6/2023
329 ORANGE AV /N	FRONT-1	AUSTRALIAN WILLOW	Tree and Stump Removal	11/16/2023
2301 ORANGETHORPE AV /W	FRONT-1	LONDON PLANE	Tree and Stump Removal	11/15/2023
2536 PEARSON AV	FRONT-2	INDIAN LAUREL FIG	No Charge Tree Only Removal	11/6/2023
1121 RICHMAN AV /N	FRONT-1	FERN PINE	Tree and Stump Removal	11/22/2023
736 ROBERTA AV	FRONT-1	BRAZILIAN PEPPER	Tree and Stump Removal	11/14/2023
2701 ROLLING HILLS DR	FRONT-10	CRAPE MYRTLE	City Crew Removal	11/13/2023
1517 SUMMIT CIR	SIDE-2	VACANT SITE	City Crew Removal	11/27/2023
1517 SUNSET LN	FRONT-1	STUMP	Stump Only Removal	11/8/2023
2500 TARRYTOWN DR	FRONT-1	EVERGREEN PEAR	Tree and Stump Removal	11/17/2023
2612 TARRYTOWN DR	FRONT-1	ORNAMENTAL PEAR	Tree and Stump Removal	11/16/2023
2618 TARRYTOWN DR	FRONT-1	ORNAMENTAL PEAR	Tree and Stump Removal	11/17/2023
300 VALLEY VIEW DR /W	FRONT-1	FERN PINE	Tree and Stump Removal	11/21/2023
300 VALLEY VIEW DR /W	FRONT-2	FERN PINE	Tree and Stump Removal	11/21/2023
300 VALLEY VIEW DR /W	FRONT-6	FERN PINE	Tree and Stump Removal	11/21/2023
300 VALLEY VIEW DR /W	FRONT-7	FERN PINE	Tree and Stump Removal	11/21/2023
300 VALLEY VIEW DR /W	FRONT-9	FERN PINE	Tree and Stump Removal	11/21/2023
325 VALLEY VIEW DR /W	FRONT-2	FERN PINE	Tree and Stump Removal	11/21/2023
325 VALLEY VIEW DR /W	FRONT-3	FERN PINE	Tree and Stump Removal	11/21/2023
325 VALLEY VIEW DR /W	FRONT-4	FERN PINE	Tree and Stump Removal	11/21/2023
501 VALLEY VIEW DR /W	FRONT-1	CHINESE ELM	Tree and Stump Removal	11/14/2023
1630 WALNUT AV /W	FRONT-1	SOUTHERN MAGNOLIA	Tree and Stump Removal	11/16/2023
1630 WALNUT AV /W	SIDE-1	STUMP	Stump Only Removal	11/8/2023
201 WHITING AV /W	SIDE-1	BOTTLE TREE	Tree and Stump Removal	11/22/2023
1424 WILSHIRE AV /W	FRONT-1	CARROTWOOD	Tree and Stump Removal	11/16/2023
118 WOODS AV /N	SIDE-4	AMERICAN SWEETGUM	Tree and Stump Removal	11/14/2023
533 YALE AV /N	FRONT-1	CHINESE ELM	Tree and Stump Removal	11/22/2023
2600 YORBA LINDA BL	FRONT-1	STUMP	Stump Only Removal	11/8/2023

STREET ADDRESS	SIDE	COMMON NAME	WORK TYPE	DATE COMPLETE
673 MAXZIM AV	FRONT-2	FERN PINE	Plant Backup - Crew	11/3/2023



Agenda Report

Parks and Recreation Commission

MEETING DATE: JANUARY 8, 2024

TO: PARKS AND RECREATION COMMISSION

**FROM: DAVID BISHOP, ACTING LANDSCAPE AND TREE MANAGER
JULIO JACOBO, TREE SUPERVISOR**

**SUBJECT: DECEMBER 2023 PUBLIC WORKS/ LANDSCAPE STAFF
REPORT**

SUMMARY

The purpose of this agenda item is to report the status of the Public Works Department/Landscape Division's monthly activities for December 2023.

RECOMMENDATION

Receive and file.

1. Tree Division Update – West Coast Arborists Inc. (WCA) is currently providing contract tree services to the City of Fullerton.
 - Trees pruned: 414
 - Trees removed: 31
2. Honey Bees – The Department received one bee call during the month of December
3. Landscape Division completed the following special projects:
 - Straw wattle, grade and added sand bags for Lucy Vanderhoof Trail
 - Volunteers at Ford Park trimmed shrubs to increase line of site for traffic.
 - Richman Park Castro Center planting with volunteers.
 - First Night prep
 - Trail work on Juanita Cooke, Hiltcher, Panorama, Puente, White Park
 - Bastanchury Park Channel cleaning
 - Overseeded Bastanchury Park and Fullerton Sports Complex soccer fields with Perennial ryegrass

4. Irrigation

- 4 Mainline irrigation repairs

STREET ADDRESS	SIDE	COMMON NAME	WORK TYPE	DATE COMPLETE
237 AQUILA AV	FRONT-1	EVERGREEN PEAR	Tree and Stump Removal	12/13/2023
1450 AVOLENCIA DR	FRONT-1	EVERGREEN PEAR	Tree and Stump Removal	12/12/2023
1406 BAKER AV	FRONT-1	STUMP	Stump Only Removal	12/22/2023
701 BAKER AV	SIDE-1	HOLLY OAK	Tree and Stump Removal	12/11/2023
541 DOROTHY LN	SIDE-1	AMERICAN SWEETGUM	Tree and Stump Removal	12/12/2023
2042 FLOWER AV	FRONT-1	BRAZILIAN PEPPER	Tree and Stump Removal	12/12/2023
436 KNEPP AV	FRONT-1	STUMP	Stump Only Removal	12/13/2023
443 KNEPP AV	FRONT-1	BRAZILIAN PEPPER	Tree and Stump Removal	12/11/2023
449 KNEPP AV	FRONT-1	STUMP	Stump Only Removal	12/13/2023
454 KNEPP AV	FRONT-1	BRAZILIAN PEPPER	Tree and Stump Removal	12/11/2023
455 KNEPP AV	FRONT-1	BRAZILIAN PEPPER	Tree and Stump Removal	12/11/2023
2220 LARK ELLEN DR	FRONT-1	STUMP	Stump Only Removal	12/22/2023
2000 MALVERN AV	FRONT-17	JACARANDA	Emer Tree Only Rmvl Backup - Crew	12/20/2023
2000 MALVERN AV	FRONT-18	JACARANDA	Emer Tree Only Rmvl Backup - Crew	12/20/2023
151 MARION BL	FRONT-1	AMERICAN SWEETGUM	Tree and Stump Removal	12/12/2023
461 MAXZIM AV	FRONT-1	CRAPE MYRTLE	City Crew Removal	12/13/2023
600 MAXZIM AV	FRONT-1	QUEENSLAND PITTOSPORUM	Tree and Stump Removal	12/11/2023
649 MAXZIM AV	FRONT-1	QUEENSLAND PITTOSPORUM	Tree and Stump Removal	12/11/2023
1501 ORANGE AV /S	FRONT-1	BRAZILIAN PEPPER	Tree and Stump Removal	12/12/2023
2024 ORANGETHORPE AV /W	SIDE-1	STUMP	City Crew Removal	12/13/2023
2024 ORANGETHORPE AV /W	SIDE-2	STUMP	City Crew Removal	12/13/2023
443 ROBERTA AV	FRONT-1	STUMP	City Crew Removal	12/13/2023
660 ROBERTA AV	FRONT-2	BRAZILIAN PEPPER	Tree and Stump Removal	12/12/2023
2725 SANTIAGO RD	FRONT-1	FERN PINE	Tree and Stump Removal	12/13/2023
2757 SEQUOIA AV	FRONT-1	CARROTWOOD	Tree and Stump Removal	12/13/2023
2757 SEQUOIA AV	FRONT-2	CARROTWOOD	Tree and Stump Removal	12/13/2023
2817 SEQUOIA AV	FRONT-2	CARROTWOOD	Tree and Stump Removal	12/13/2023
1106 SHEPPARD DR	FRONT-2	AMERICAN SWEETGUM	Tree and Stump Removal	12/13/2023
2001 SKYLINE DR	FRONT-8	CALIFORNIA PEPPER	Tree and Stump Removal	12/13/2023
2001 SKYLINE DR	FRONT-9	CALIFORNIA PEPPER	Tree and Stump Removal	12/13/2023
526 WILSON AV	FRONT-1	BRAZILIAN PEPPER	Emer Tree Only Rmvl Backup - Crew	12/21/2023

STREET ADDRESS	SIDE	COMMON NAME	WORK TYPE	DATE COMPLETE
2 AMTRAK STATION	FRONT-1	BOTTLE TREE	Service Request Pruning	12/14/2023
2 AMTRAK STATION	FRONT-2	BOTTLE TREE	Service Request Pruning	12/14/2023
2 AMTRAK STATION	FRONT-3	BOTTLE TREE	Service Request Pruning	12/14/2023
2 AMTRAK STATION	FRONT-4	BOTTLE TREE	Service Request Pruning	12/14/2023
2 AMTRAK STATION	FRONT-5	BOTTLE TREE	Service Request Pruning	12/14/2023
2 AMTRAK STATION	FRONT-6	BOTTLE TREE	Service Request Pruning	12/15/2023
2 AMTRAK STATION	FRONT-7	BOTTLE TREE	Service Request Pruning	12/15/2023
2 AMTRAK STATION	FRONT-8	BOTTLE TREE	Service Request Pruning	12/15/2023
2 AMTRAK STATION	FRONT-10	BOTTLE TREE	Service Request Pruning	12/14/2023
2 AMTRAK STATION	FRONT-11	BOTTLE TREE	Service Request Pruning	12/14/2023
2 AMTRAK STATION	FRONT-12	BOTTLE TREE	Service Request Pruning	12/14/2023
2 AMTRAK STATION	FRONT-13	BOTTLE TREE	Service Request Pruning	12/14/2023
2 AMTRAK STATION	FRONT-14	BOTTLE TREE	Service Request Pruning	12/14/2023
2 AMTRAK STATION	FRONT-15	BOTTLE TREE	Service Request Pruning	12/14/2023
2 AMTRAK STATION	FRONT-16	BOTTLE TREE	Service Request Pruning	12/14/2023
2 AMTRAK STATION	FRONT-17	BOTTLE TREE	Service Request Pruning	12/14/2023
2 AMTRAK STATION	FRONT-18	BOTTLE TREE	Service Request Pruning	12/14/2023
2 AMTRAK STATION	FRONT-28	SILK-FLOSS TREE	Service Request Pruning	12/15/2023
2 AMTRAK STATION	FRONT-46	BOTTLE TREE	Service Request Pruning	12/14/2023
2 AMTRAK STATION	FRONT-47	BOTTLE TREE	Service Request Pruning	12/14/2023
2 AMTRAK STATION	FRONT-48	BOTTLE TREE	Service Request Pruning	12/14/2023
2 AMTRAK STATION	FRONT-49	BOTTLE TREE	Service Request Pruning	12/14/2023
2 AMTRAK STATION	FRONT-56	BOTTLE TREE	Service Request Pruning	12/14/2023
2 AMTRAK STATION	FRONT-57	BOTTLE TREE	Service Request Pruning	12/14/2023
2 AMTRAK STATION	FRONT-63	DATE PALM	Prune Backup - Crew	12/11/2023
2 AMTRAK STATION	FRONT-64	DATE PALM	Prune Backup - Crew	12/11/2023
2 AMTRAK STATION	FRONT-65	DATE PALM	Prune Backup - Crew	12/11/2023
2 AMTRAK STATION	FRONT-66	DATE PALM	Prune Backup - Crew	12/11/2023
2 AMTRAK STATION	FRONT-67	QUEEN PALM	Prune Backup - Crew	12/12/2023
2 AMTRAK STATION	FRONT-68	QUEEN PALM	Prune Backup - Crew	12/12/2023
2 AMTRAK STATION	FRONT-74	DATE PALM	Prune Backup - Crew	12/12/2023
2 AMTRAK STATION	FRONT-75	DATE PALM	Prune Backup - Crew	12/12/2023
2 AMTRAK STATION	FRONT-76	DATE PALM	Prune Backup - Crew	12/12/2023
2 AMTRAK STATION	FRONT-77	DATE PALM	Prune Backup - Crew	12/12/2023

STREET ADDRESS	SIDE	COMMON NAME	WORK TYPE	DATE COMPLETE
2 AMTRAK STATION	FRONT-78	DATE PALM	Prune Backup - Crew	12/12/2023
2 AMTRAK STATION	FRONT-79	DATE PALM	Prune Backup - Crew	12/12/2023
2 AMTRAK STATION	FRONT-80	DATE PALM	Prune Backup - Crew	12/12/2023
2 AMTRAK STATION	FRONT-81	DATE PALM	Prune Backup - Crew	12/12/2023
2 AMTRAK STATION	FRONT-82	DATE PALM	Prune Backup - Crew	12/12/2023
2 AMTRAK STATION	FRONT-84	DATE PALM	Prune Backup - Crew	12/13/2023
2 AMTRAK STATION	FRONT-85	DATE PALM	Prune Backup - Crew	12/13/2023
2 AMTRAK STATION	FRONT-86	DATE PALM	Prune Backup - Crew	12/13/2023
2 AMTRAK STATION	FRONT-87	DATE PALM	Prune Backup - Crew	12/13/2023
2 AMTRAK STATION	FRONT-88	DATE PALM	Prune Backup - Crew	12/13/2023
2 AMTRAK STATION	FRONT-89	DATE PALM	Prune Backup - Crew	12/13/2023
2 AMTRAK STATION	FRONT-90	DATE PALM	Prune Backup - Crew	12/13/2023
2 AMTRAK STATION	FRONT-91	DATE PALM	Prune Backup - Crew	12/13/2023
2 AMTRAK STATION	FRONT-108	BRISBANE BOX	Prune Backup - Crew	12/13/2023
2 AMTRAK STATION	FRONT-112	BRISBANE BOX	Prune Backup - Crew	12/13/2023
2 AMTRAK STATION	FRONT-113	BRISBANE BOX	Prune Backup - Crew	12/13/2023
2 AMTRAK STATION	FRONT-115	BRISBANE BOX	Prune Backup - Crew	12/13/2023
2 AMTRAK STATION	FRONT-116	BRISBANE BOX	Prune Backup - Crew	12/13/2023
2 AMTRAK STATION	FRONT-117	BRISBANE BOX	Prune Backup - Crew	12/14/2023
2 AMTRAK STATION	FRONT-119	DATE PALM	Prune Backup - Crew	12/13/2023
2 AMTRAK STATION	FRONT-120	DATE PALM	Prune Backup - Crew	12/13/2023
2 AMTRAK STATION	FRONT-121	DATE PALM	Prune Backup - Crew	12/13/2023
2 AMTRAK STATION	FRONT-122	DATE PALM	Prune Backup - Crew	12/13/2023
2 AMTRAK STATION	FRONT-123	DATE PALM	Prune Backup - Crew	12/13/2023
2 AMTRAK STATION	FRONT-124	DATE PALM	Prune Backup - Crew	12/13/2023
2 AMTRAK STATION	FRONT-125	DATE PALM	Prune Backup - Crew	12/13/2023
2 AMTRAK STATION	FRONT-126	DATE PALM	Prune Backup - Crew	12/13/2023
2 AMTRAK STATION	FRONT-127	DATE PALM	Prune Backup - Crew	12/13/2023
2 AMTRAK STATION	FRONT-128	DATE PALM	Prune Backup - Crew	12/13/2023
2 AMTRAK STATION	FRONT-129	DATE PALM	Prune Backup - Crew	12/13/2023
2 AMTRAK STATION	FRONT-130	DATE PALM	Prune Backup - Crew	12/13/2023
2 AMTRAK STATION	FRONT-131	DATE PALM	Prune Backup - Crew	12/13/2023
2 AMTRAK STATION	FRONT-132	DATE PALM	Prune Backup - Crew	12/13/2023
2 AMTRAK STATION	FRONT-133	DATE PALM	Prune Backup - Crew	12/13/2023

STREET ADDRESS	SIDE	COMMON NAME	WORK TYPE	DATE COMPLETE
2 AMTRAK STATION	FRONT-9	BOTTLE TREE	Service Request Pruning	12/15/2023
2 AMTRAK STATION	FRONT-99	BRISBANE BOX	Prune Backup - Crew	12/13/2023
2 AMTRAK STATION	FRONT-100	BRISBANE BOX	Prune Backup - Crew	12/13/2023
2 AMTRAK STATION	FRONT-101	BRISBANE BOX	Prune Backup - Crew	12/13/2023
2 AMTRAK STATION	FRONT-102	BRISBANE BOX	Prune Backup - Crew	12/13/2023
2 AMTRAK STATION	FRONT-103	BRISBANE BOX	Prune Backup - Crew	12/13/2023
2 AMTRAK STATION	FRONT-104	BRISBANE BOX	Prune Backup - Crew	12/13/2023
2 AMTRAK STATION	FRONT-105	BRISBANE BOX	Prune Backup - Crew	12/13/2023
2 AMTRAK STATION	LOT-25	BOTTLE TREE	Service Request Pruning	12/14/2023
2 AMTRAK STATION	LOT-26	BOTTLE TREE	Service Request Pruning	12/14/2023
2 AMTRAK STATION	LOT-27	BOTTLE TREE	Service Request Pruning	12/14/2023
2 AMTRAK STATION	LOT-28	BOTTLE TREE	Service Request Pruning	12/14/2023
2 AMTRAK STATION	LOT-29	BOTTLE TREE	Service Request Pruning	12/14/2023
2 AMTRAK STATION	LOT-30	BOTTLE TREE	Service Request Pruning	12/14/2023
2 AMTRAK STATION	LOT-31	BOTTLE TREE	Service Request Pruning	12/14/2023
2 AMTRAK STATION	LOT-42	BOTTLE TREE	Service Request Pruning	12/14/2023
2 AMTRAK STATION	LOT-43	BOTTLE TREE	Service Request Pruning	12/14/2023
2 AMTRAK STATION	LOT-51	BOTTLE TREE	Service Request Pruning	12/14/2023
2 AMTRAK STATION	LOT-52	BOTTLE TREE	Service Request Pruning	12/14/2023
1300 BREA BL	MEDIAN-1	BRISBANE BOX	Grid Pruning	12/8/2023
1301 BREA BL	FRONT-1	CRAPE MYRTLE	Grid Pruning	12/8/2023
1301 BREA BL	FRONT-2	CRAPE MYRTLE	Grid Pruning	12/8/2023
1301 BREA BL	FRONT-3	CRAPE MYRTLE	Grid Pruning	12/8/2023
1301 BREA BL	FRONT-5	CRAPE MYRTLE	Grid Pruning	12/8/2023
1301 BREA BL	FRONT-7	CRAPE MYRTLE	Grid Pruning	12/8/2023
1301 BREA BL	FRONT-8	ROUND-LEAFED SWEETGUM	Grid Pruning	12/8/2023
1301 BREA BL	FRONT-9	ROUND-LEAFED SWEETGUM	Grid Pruning	12/8/2023
1301 BREA BL	FRONT-10	CRAPE MYRTLE	Grid Pruning	12/8/2023
1301 BREA BL	FRONT-11	ROUND-LEAFED SWEETGUM	Grid Pruning	12/8/2023
1301 BREA BL	FRONT-12	ROUND-LEAFED SWEETGUM	Grid Pruning	12/8/2023
1301 BREA BL	FRONT-13	ROUND-LEAFED SWEETGUM	Grid Pruning	12/8/2023
1301 BREA BL	FRONT-14	CRAPE MYRTLE	Grid Pruning	12/8/2023
1301 BREA BL	FRONT-15	ROUND-LEAFED SWEETGUM	Grid Pruning	12/8/2023
1370 BREA BL	FRONT-1	ARAPAHO CRAPE MYRTLE	Grid Pruning	12/7/2023

STREET ADDRESS	SIDE	COMMON NAME	WORK TYPE	DATE COMPLETE
1370 BREA BL	FRONT-2	ROUND-LEAFED SWEETGUM	Grid Pruning	12/7/2023
1370 BREA BL	FRONT-3	CRAPE MYRTLE	Grid Pruning	12/7/2023
1370 BREA BL	FRONT-7	CRAPE MYRTLE	Grid Pruning	12/13/2023
1370 BREA BL	FRONT-8	LEMON BOTTLEBRUSH	Grid Pruning	12/15/2023
1370 BREA BL	FRONT-9	CRAPE MYRTLE	Grid Pruning	12/19/2023
1370 BREA BL	FRONT-4	ARAPAHO CRAPE MYRTLE	Grid Pruning	12/7/2023
1370 BREA BL	FRONT-6	ARAPAHO CRAPE MYRTLE	Grid Pruning	12/7/2023
1440 BREA BL	FRONT-22	LAVENDER TRUMPET TREE	Grid Pruning	12/19/2023
1440 BREA BL	FRONT-23	LAVENDER TRUMPET TREE	Grid Pruning	12/19/2023
1440 BREA BL	FRONT-24	LAVENDER TRUMPET TREE	Grid Pruning	12/19/2023
1440 BREA BL	FRONT-25	BRADFORD PEAR	Grid Pruning	12/19/2023
1440 BREA BL	FRONT-26	BRADFORD PEAR	Grid Pruning	12/19/2023
1440 BREA BL	FRONT-27	BRADFORD PEAR	Grid Pruning	12/19/2023
1440 BREA BL	FRONT-28	BRADFORD PEAR	Grid Pruning	12/19/2023
1441 BREA BL	FRONT-1	LEMON BOTTLEBRUSH	Grid Pruning	12/8/2023
1441 BREA BL	FRONT-2	CRAPE MYRTLE	Grid Pruning	12/8/2023
1441 BREA BL	FRONT-4	WEEPING BOTTLEBRUSH	Grid Pruning	12/8/2023
1501 BREA BL	FRONT-2	ROUND-LEAFED SWEETGUM	Grid Pruning	12/8/2023
1501 BREA BL	FRONT-3	ROUND-LEAFED SWEETGUM	Grid Pruning	12/8/2023
1701 BREA BL	FRONT-1	CRAPE MYRTLE	Grid Pruning	12/8/2023
1701 BREA BL	FRONT-2	LEMON BOTTLEBRUSH	Grid Pruning	12/8/2023
1701 BREA BL	FRONT-3	LEMON BOTTLEBRUSH	Grid Pruning	12/8/2023
2000 BREA BL	FRONT-1	CRAPE MYRTLE	Grid Pruning	12/15/2023
2000 BREA BL	FRONT-2	CRAPE MYRTLE	Grid Pruning	12/15/2023
2000 BREA BL	FRONT-3	CRAPE MYRTLE	Grid Pruning	12/15/2023
2000 BREA BL	FRONT-4	CRAPE MYRTLE	Grid Pruning	12/15/2023
2000 BREA BL	FRONT-5	CRAPE MYRTLE	Grid Pruning	12/15/2023
1901 BRENTWOOD DR	FRONT-1	FERN PINE	Grid Pruning	12/13/2023
1901 BRENTWOOD DR	FRONT-2	FERN PINE	Grid Pruning	12/13/2023
1908 BRENTWOOD DR	FRONT-1	FERN PINE	Grid Pruning	12/13/2023
1908 BRENTWOOD DR	FRONT-2	FERN PINE	Grid Pruning	12/13/2023
1916 BRENTWOOD DR	FRONT-1	FERN PINE	Grid Pruning	12/13/2023
1925 BRENTWOOD DR	FRONT-2	FERN PINE	Grid Pruning	12/13/2023
1925 BRENTWOOD DR	SIDE-2	JACARANDA	Grid Pruning	12/6/2023

STREET ADDRESS	SIDE	COMMON NAME	WORK TYPE	DATE COMPLETE
1932 BRENTWOOD DR	SIDE-1	JACARANDA	Grid Pruning	12/6/2023
1932 BRENTWOOD DR	SIDE-2	JACARANDA	Grid Pruning	12/6/2023
2309 COMMONWEALTH AV /E	FRONT-1	HOLLY OAK	Service Request Pruning	12/14/2023
2313 COMMONWEALTH AV /E	FRONT-1	HOLLY OAK	Service Request Pruning	12/14/2023
2317 COMMONWEALTH AV /E	FRONT-1	HOLLY OAK	Service Request Pruning	12/14/2023
2317 COMMONWEALTH AV /E	FRONT-2	HOLLY OAK	Service Request Pruning	12/14/2023
237 COMMONWEALTH AV /W	FRONT-16	CALIFORNIA FAN PALM	Palm Pruning	12/11/2023
501 CORNELL AV /N	FRONT-1	QUEEN PALM	Palm Pruning	12/8/2023
501 CORNELL AV /N	FRONT-3	QUEEN PALM	Palm Pruning	12/8/2023
501 CORNELL AV /N	FRONT-4	QUEEN PALM	Palm Pruning	12/8/2023
501 CORNELL AV /N	FRONT-5	QUEEN PALM	Palm Pruning	12/8/2023
1031 DOROTHY LN	FRONT-1	HOLLY OAK	Grid Pruning	12/1/2023
1037 DOROTHY LN	SIDE-1	EVERGREEN PEAR	Grid Pruning	12/1/2023
600 DOROTHY LN	FRONT-1	CRAPE MYRTLE	Grid Pruning	12/1/2023
608 DOROTHY LN	FRONT-1	CRAPE MYRTLE	Grid Pruning	12/1/2023
648 DOROTHY LN	FRONT-1	CRAPE MYRTLE	Grid Pruning	12/1/2023
811 DOROTHY LN	FRONT-1	CORK OAK	Grid Pruning	12/1/2023
901 DOROTHY LN	FRONT-1	HOLLY OAK	Grid Pruning	12/1/2023
901 DOROTHY LN	FRONT-2	HOLLY OAK	Grid Pruning	12/1/2023
2000 DRIFTWOOD DR	MEDIAN-1	OLIVE	Grid Pruning	12/13/2023
2000 DRIFTWOOD DR	SIDE-1	JACARANDA	Grid Pruning	12/7/2023
2000 DRIFTWOOD DR	SIDE-2	JACARANDA	Grid Pruning	12/7/2023
2000 DRIFTWOOD DR	SIDE-3	JACARANDA	Grid Pruning	12/7/2023
1446 HARBOR BL /N	FRONT-1	LONDON PLANE	Grid Pruning	12/11/2023
1446 HARBOR BL /N	FRONT-2	LONDON PLANE	Grid Pruning	12/11/2023
1446 HARBOR BL /N	FRONT-3	LONDON PLANE	Grid Pruning	12/11/2023
1450 HARBOR BL /N	FRONT-1	LONDON PLANE	Grid Pruning	12/11/2023
1450 HARBOR BL /N	FRONT-2	LONDON PLANE	Grid Pruning	12/11/2023
1450 HARBOR BL /N	FRONT-3	LONDON PLANE	Grid Pruning	12/11/2023
1460 HARBOR BL /N	FRONT-2	LONDON PLANE	Grid Pruning	12/11/2023
1460 HARBOR BL /N	FRONT-3	COLUMBIA PLANE	Grid Pruning	12/11/2023
1600 HARBOR BL /N	FRONT-3	LONDON PLANE	Grid Pruning	12/11/2023
1600 HARBOR BL /N	FRONT-4	LONDON PLANE	Grid Pruning	12/11/2023
1600 HARBOR BL /N	FRONT-5	LONDON PLANE	Grid Pruning	12/11/2023

STREET ADDRESS	SIDE	COMMON NAME	WORK TYPE	DATE COMPLETE
1600 HARBOR BL /N	FRONT-6	LONDON PLANE	Grid Pruning	12/11/2023
1600 HARBOR BL /N	FRONT-7	LONDON PLANE	Grid Pruning	12/11/2023
1600 HARBOR BL /N	FRONT-8	LONDON PLANE	Grid Pruning	12/11/2023
1600 HARBOR BL /N	FRONT-9	LONDON PLANE	Grid Pruning	12/11/2023
1600 HARBOR BL /N	FRONT-10	BOTTLE TREE	Grid Pruning	12/11/2023
1012 HARMONY LN	FRONT-1	EVERGREEN PEAR	Grid Pruning	12/1/2023
1018 HARMONY LN	FRONT-1	AUSTRALIAN WILLOW	Grid Pruning	12/1/2023
1027 HARMONY LN	FRONT-1	EVERGREEN PEAR	Grid Pruning	12/1/2023
1035 HARMONY LN	FRONT-1	EVERGREEN PEAR	Grid Pruning	12/1/2023
119 HELEN DR	FRONT-2	CRAPE MYRTLE	Grid Pruning	12/13/2023
1117 HORNET WY	FRONT-1	CARROTWOOD	Grid Pruning	12/13/2023
1215 LONGVIEW DR	FRONT-1	SOUTHERN MAGNOLIA	Grid Pruning	12/1/2023
1215 LONGVIEW DR	FRONT-2	SOUTHERN MAGNOLIA	Grid Pruning	12/1/2023
1215 LONGVIEW DR	FRONT-3	SOUTHERN MAGNOLIA	Grid Pruning	12/1/2023
1221 LONGVIEW DR	FRONT-1	SOUTHERN MAGNOLIA	Grid Pruning	12/12/2023
1221 LONGVIEW DR	FRONT-2	SOUTHERN MAGNOLIA	Grid Pruning	12/12/2023
1225 LONGVIEW DR	FRONT-1	SOUTHERN MAGNOLIA	Grid Pruning	12/5/2023
1225 LONGVIEW DR	FRONT-2	SOUTHERN MAGNOLIA	Grid Pruning	12/5/2023
1228 LONGVIEW DR	FRONT-1	SOUTHERN MAGNOLIA	Grid Pruning	12/5/2023
1229 LONGVIEW DR	FRONT-1	SOUTHERN MAGNOLIA	Grid Pruning	12/1/2023
1229 LONGVIEW DR	FRONT-2	SOUTHERN MAGNOLIA	Grid Pruning	12/5/2023
1229 LONGVIEW DR	FRONT-3	SOUTHERN MAGNOLIA	Grid Pruning	12/5/2023
1232 LONGVIEW DR	FRONT-1	SOUTHERN MAGNOLIA	Grid Pruning	12/4/2023
1232 LONGVIEW DR	FRONT-2	SOUTHERN MAGNOLIA	Grid Pruning	12/4/2023
1233 LONGVIEW DR	FRONT-1	SOUTHERN MAGNOLIA	Grid Pruning	12/5/2023
1237 LONGVIEW DR	FRONT-1	SOUTHERN MAGNOLIA	Grid Pruning	12/5/2023
1237 LONGVIEW DR	FRONT-2	SOUTHERN MAGNOLIA	Grid Pruning	12/5/2023
1241 LONGVIEW DR	FRONT-1	SOUTHERN MAGNOLIA	Grid Pruning	12/5/2023
1244 LONGVIEW DR	FRONT-1	SOUTHERN MAGNOLIA	Grid Pruning	12/5/2023
1244 LONGVIEW DR	FRONT-2	SOUTHERN MAGNOLIA	Grid Pruning	12/5/2023
1245 LONGVIEW DR	FRONT-1	SOUTHERN MAGNOLIA	Grid Pruning	12/5/2023
1249 LONGVIEW DR	FRONT-1	SOUTHERN MAGNOLIA	Grid Pruning	12/5/2023
1250 LONGVIEW DR	FRONT-1	SOUTHERN MAGNOLIA	Grid Pruning	12/5/2023
1250 LONGVIEW DR	FRONT-2	SOUTHERN MAGNOLIA	Grid Pruning	12/5/2023

STREET ADDRESS	SIDE	COMMON NAME	WORK TYPE	DATE COMPLETE
1253 LONGVIEW DR	FRONT-1	CAMPHOR TREE	Grid Pruning	12/5/2023
1256 LONGVIEW DR	FRONT-1	SOUTHERN MAGNOLIA	Grid Pruning	12/5/2023
1256 LONGVIEW DR	FRONT-2	SOUTHERN MAGNOLIA	Grid Pruning	12/5/2023
1257 LONGVIEW DR	FRONT-1	SOUTHERN MAGNOLIA	Grid Pruning	12/5/2023
1261 LONGVIEW DR	FRONT-1	SOUTHERN MAGNOLIA	Grid Pruning	12/5/2023
1511 LONGVIEW DR	FRONT-2	SILK TREE	Grid Pruning	12/12/2023
1512 LONGVIEW DR	FRONT-1	SHAMEL ASH	Grid Pruning	12/12/2023
1517 LONGVIEW DR	FRONT-1	SOUTHERN MAGNOLIA	Grid Pruning	12/12/2023
1800 LONGVIEW DR	FRONT-1	SHAMEL ASH	Grid Pruning	12/12/2023
1800 LONGVIEW DR	FRONT-2	SHAMEL ASH	Grid Pruning	12/12/2023
1800 LONGVIEW DR	FRONT-3	SHAMEL ASH	Grid Pruning	12/12/2023
1800 LONGVIEW DR	FRONT-4	SHAMEL ASH	Grid Pruning	12/12/2023
1035 MELODY LN	SIDE-1	ORNAMENTAL PEAR	Grid Pruning	12/1/2023
1100 MELODY LN	FRONT-1	AMERICAN SWEETGUM	Grid Pruning	12/1/2023
1100 MELODY LN	FRONT-2	CRAPE MYRTLE	Grid Pruning	12/1/2023
1100 MELODY LN	SIDE-1	CAMPHOR TREE	Grid Pruning	12/1/2023
1100 MELODY LN	SIDE-2	LAVENDER TRUMPET TREE	Grid Pruning	12/1/2023
748 MIRAMAR DR	SIDE-1	CRAPE MYRTLE	Grid Pruning	12/4/2023
748 MIRAMAR DR	SIDE-2	CRAPE MYRTLE	Grid Pruning	12/4/2023
701 NANCY LN	SIDE-2	SOUTHERN MAGNOLIA	Grid Pruning	12/12/2023
1601 NUTWOOD AV	FRONT-2	BRAZILIAN PEPPER	Emer Prune Backup - Crew	12/9/2023
1931 OVERLOOK RD	FRONT-1	SOUTHERN MAGNOLIA	Grid Pruning	12/6/2023
1940 OVERLOOK RD	FRONT-1	CRAPE MYRTLE	Grid Pruning	12/6/2023
1947 OVERLOOK RD	FRONT-1	SOUTHERN MAGNOLIA	Grid Pruning	12/6/2023
1948 OVERLOOK RD	FRONT-1	SOUTHERN MAGNOLIA	Grid Pruning	12/6/2023
1964 OVERLOOK RD	FRONT-1	SOUTHERN MAGNOLIA	Grid Pruning	12/6/2023
1971 OVERLOOK RD	FRONT-1	SOUTHERN MAGNOLIA	Grid Pruning	12/6/2023
1972 OVERLOOK RD	FRONT-1	SOUTHERN MAGNOLIA	Grid Pruning	12/6/2023
1979 OVERLOOK RD	FRONT-1	SOUTHERN MAGNOLIA	Grid Pruning	12/6/2023
1979 OVERLOOK RD	SIDE-1	JACARANDA	Grid Pruning	12/13/2023
1979 OVERLOOK RD	SIDE-2	JACARANDA	Grid Pruning	12/13/2023
1980 OVERLOOK RD	FRONT-1	SOUTHERN MAGNOLIA	Grid Pruning	12/6/2023
1980 OVERLOOK RD	SIDE-1	JACARANDA	Grid Pruning	12/6/2023
1980 OVERLOOK RD	SIDE-2	JACARANDA	Grid Pruning	12/6/2023

STREET ADDRESS	SIDE	COMMON NAME	WORK TYPE	DATE COMPLETE
2001 OVERLOOK RD	FRONT-1	SOUTHERN MAGNOLIA	Grid Pruning	12/13/2023
2001 OVERLOOK RD	SIDE-1	JACARANDA	Grid Pruning	12/13/2023
2001 OVERLOOK RD	SIDE-2	JACARANDA	Grid Pruning	12/13/2023
2015 PALISADES DR	FRONT-1	MAIDENHAIR TREE	Grid Pruning	12/15/2023
2027 PALISADES DR	FRONT-1	PURPLE ORCHID TREE	Grid Pruning	12/15/2023
517 PANORAMA RD	FRONT-1	SILK TREE	Grid Pruning	12/13/2023
517 PANORAMA RD	FRONT-2	SILK TREE	Grid Pruning	12/13/2023
517 PANORAMA RD	SIDE-1	SOUTHERN MAGNOLIA	Grid Pruning	12/13/2023
525 PANORAMA RD	FRONT-1	JACARANDA	Grid Pruning	12/13/2023
735 PANORAMA RD	FRONT-1	JACARANDA	Grid Pruning	12/7/2023
740 PANORAMA RD	FRONT-1	JACARANDA	Grid Pruning	12/7/2023
748 PANORAMA RD	FRONT-1	JACARANDA	Grid Pruning	12/7/2023
800 PANORAMA RD	FRONT-1	JACARANDA	Grid Pruning	12/7/2023
801 PANORAMA RD	FRONT-1	JACARANDA	Grid Pruning	12/7/2023
801 PANORAMA RD	FRONT-2	JACARANDA	Grid Pruning	12/7/2023
808 PANORAMA RD	FRONT-1	JACARANDA	Grid Pruning	12/7/2023
811 PANORAMA RD	FRONT-1	JACARANDA	Grid Pruning	12/7/2023
811 PANORAMA RD	FRONT-2	JACARANDA	Grid Pruning	12/7/2023
816 PANORAMA RD	FRONT-1	JACARANDA	Grid Pruning	12/7/2023
819 PANORAMA RD	FRONT-1	JACARANDA	Grid Pruning	12/7/2023
819 PANORAMA RD	FRONT-2	JACARANDA	Grid Pruning	12/7/2023
824 PANORAMA RD	FRONT-1	JACARANDA	Grid Pruning	12/7/2023
827 PANORAMA RD	FRONT-1	JACARANDA	Grid Pruning	12/7/2023
827 PANORAMA RD	FRONT-2	JACARANDA	Grid Pruning	12/7/2023
835 PANORAMA RD	FRONT-1	JACARANDA	Grid Pruning	12/7/2023
835 PANORAMA RD	FRONT-2	JACARANDA	Grid Pruning	12/7/2023
840 PANORAMA RD	FRONT-1	JACARANDA	Grid Pruning	12/7/2023
848 PANORAMA RD	FRONT-1	JACARANDA	Grid Pruning	12/7/2023
2 POLICE DEPARTMENT	FRONT-20	PYGMY DATE PALM	Palm Pruning	12/6/2023
2 POLICE DEPARTMENT	FRONT-21	PYGMY DATE PALM	Palm Pruning	12/6/2023
2 POLICE DEPARTMENT	FRONT-28	WINDMILL PALM	Palm Pruning	12/11/2023
1237 RAYMOND AV /N	FRONT-1	GOLD MEDALLION TREE	Grid Pruning	12/1/2023
2213 REVERE AV	FRONT-1	CRAPE MYRTLE	Service Request Pruning	12/14/2023
1325 RIDGE VIEW TER	FRONT-1	SOUTHERN MAGNOLIA	Grid Pruning	12/19/2023

STREET ADDRESS	SIDE	COMMON NAME	WORK TYPE	DATE COMPLETE
1325 RIDGE VIEW TER	FRONT-2	SOUTHERN MAGNOLIA	Grid Pruning	12/19/2023
1423 SHADOW LN	FRONT-1	FERN PINE	Grid Pruning	12/13/2023
1430 SHADOW LN	FRONT-1	FERN PINE	Large Scale Pruning	12/13/2023
1438 SHADOW LN	FRONT-1	FERN PINE	Grid Pruning	12/13/2023
1439 SHADOW LN	FRONT-1	FERN PINE	Grid Pruning	12/13/2023
1445 SHADOW LN	FRONT-1	FERN PINE	Grid Pruning	12/13/2023
1451 SHADOW LN	FRONT-1	FERN PINE	Grid Pruning	12/13/2023
1501 SHADOW LN	FRONT-1	INDIAN LAUREL FIG	Grid Pruning	12/13/2023
1542 SHADOW LN	FRONT-1	GOLD MEDALLION TREE	Grid Pruning	12/13/2023
1542 SHADOW LN	FRONT-2	FERN PINE	Grid Pruning	12/13/2023
1551 SHADOW LN	FRONT-1	FERN PINE	Grid Pruning	12/13/2023
1125 SHEPPARD DR	FRONT-1	AMERICAN SWEETGUM	Grid Pruning	12/12/2023
1125 SHEPPARD DR	FRONT-2	AMERICAN SWEETGUM	Grid Pruning	12/12/2023
1130 SHEPPARD DR	FRONT-2	AMERICAN SWEETGUM	Grid Pruning	12/12/2023
1213 SHEPPARD DR	FRONT-1	JACARANDA	Grid Pruning	12/12/2023
1218 SHEPPARD DR	FRONT-1	JACARANDA	Grid Pruning	12/12/2023
1219 SHEPPARD DR	FRONT-1	JACARANDA	Grid Pruning	12/12/2023
1224 SHEPPARD DR	FRONT-1	JACARANDA	Grid Pruning	12/12/2023
1225 SHEPPARD DR	FRONT-1	JACARANDA	Grid Pruning	12/12/2023
1231 SHEPPARD DR	FRONT-1	JACARANDA	Grid Pruning	12/12/2023
1231 SHEPPARD DR	FRONT-2	JACARANDA	Grid Pruning	12/12/2023
1231 SHEPPARD DR	FRONT-3	JACARANDA	Grid Pruning	12/12/2023
1254 SHEPPARD DR	FRONT-1	JACARANDA	Grid Pruning	12/12/2023
1260 SHEPPARD DR	FRONT-1	JACARANDA	Grid Pruning	12/12/2023
1272 SHEPPARD DR	FRONT-1	JACARANDA	Grid Pruning	12/12/2023
1301 SHEPPARD DR	SIDE-1	JACARANDA	Grid Pruning	12/12/2023
1412 SHEPPARD DR	SIDE-1	INDIAN LAUREL FIG	Grid Pruning	12/13/2023
1490 SKYLINE DR	FRONT-1	CAMPHOR TREE	Grid Pruning	12/14/2023
1490 SKYLINE DR	FRONT-2	CAMPHOR TREE	Grid Pruning	12/14/2023
1724 SKYLINE DR	SIDE-1	SOUTHERN MAGNOLIA	Grid Pruning	12/14/2023
1724 SKYLINE DR	SIDE-2	SOUTHERN MAGNOLIA	Grid Pruning	12/14/2023
1925 SKYLINE DR	FRONT-1	CHINESE ELM	Grid Pruning	12/1/2023
1925 SKYLINE DR	FRONT-2	CHINESE ELM	Grid Pruning	12/19/2023
1957 SMOKEWOOD AV	FRONT-1	CAMPHOR TREE	Grid Pruning	12/11/2023

STREET ADDRESS	SIDE	COMMON NAME	WORK TYPE	DATE COMPLETE
1965 SMOKEWOOD AV	FRONT-1	PURPLE ORCHID TREE	Grid Pruning	12/11/2023
1972 SMOKEWOOD AV	SIDE-1	JACARANDA	Large Scale Pruning	12/6/2023
1972 SMOKEWOOD AV	SIDE-2	JACARANDA	Grid Pruning	12/6/2023
1973 SMOKEWOOD AV	SIDE-1	JACARANDA	Grid Pruning	12/6/2023
1973 SMOKEWOOD AV	SIDE-2	JACARANDA	Grid Pruning	12/6/2023
2000 SMOKEWOOD AV	SIDE-1	JACARANDA	Grid Pruning	12/7/2023
2000 SMOKEWOOD AV	SIDE-2	JACARANDA	Grid Pruning	12/7/2023
2001 SMOKEWOOD AV	SIDE-1	JACARANDA	Grid Pruning	12/7/2023
2006 SMOKEWOOD AV	FRONT-1	PURPLE ORCHID TREE	Grid Pruning	12/4/2023
2009 SMOKEWOOD AV	FRONT-1	PURPLE ORCHID TREE	Grid Pruning	12/4/2023
2035 SMOKEWOOD AV	FRONT-1	GOLD MEDALLION TREE	Grid Pruning	12/4/2023
2053 SMOKEWOOD AV	FRONT-1	CAMPHOR TREE	Grid Pruning	12/4/2023
2067 SMOKEWOOD AV	FRONT-1	PURPLE ORCHID TREE	Grid Pruning	12/11/2023
2072 SMOKEWOOD AV	FRONT-1	PURPLE ORCHID TREE	Grid Pruning	12/11/2023
2073 SMOKEWOOD AV	FRONT-2	PURPLE ORCHID TREE	Grid Pruning	12/1/2023
1200 STANFORD AV	FRONT-1	EVERGREEN PEAR	Grid Pruning	12/1/2023
1218 STANFORD AV	FRONT-1	EVERGREEN PEAR	Grid Pruning	12/1/2023
1224 STANFORD AV	FRONT-1	ORNAMENTAL PEAR	Grid Pruning	12/1/2023
700 TOUSSAU DR	FRONT-1	CRAPE MYRTLE	Grid Pruning	12/5/2023
700 TOUSSAU DR	FRONT-2	CRAPE MYRTLE	Grid Pruning	12/5/2023
700 TOUSSAU DR	FRONT-3	CRAPE MYRTLE	Grid Pruning	12/5/2023
700 TOUSSAU DR	FRONT-4	CRAPE MYRTLE	Grid Pruning	12/5/2023
700 TOUSSAU DR	SIDE-1	SOUTHERN MAGNOLIA	Grid Pruning	12/1/2023
700 TOUSSAU DR	SIDE-2	SOUTHERN MAGNOLIA	Grid Pruning	12/1/2023
700 TOUSSAU DR	SIDE-3	SOUTHERN MAGNOLIA	Grid Pruning	12/1/2023
700 TOUSSAU DR	SIDE-4	SOUTHERN MAGNOLIA	Grid Pruning	12/1/2023
700 TOUSSAU DR	SIDE-5	SOUTHERN MAGNOLIA	Grid Pruning	12/5/2023
706 TOUSSAU DR	FRONT-1	CRAPE MYRTLE	Grid Pruning	12/4/2023
706 TOUSSAU DR	FRONT-2	CRAPE MYRTLE	Grid Pruning	12/4/2023
709 TOUSSAU DR	FRONT-1	CRAPE MYRTLE	Grid Pruning	12/4/2023
709 TOUSSAU DR	FRONT-2	CRAPE MYRTLE	Grid Pruning	12/4/2023
712 TOUSSAU DR	FRONT-1	CRAPE MYRTLE	Grid Pruning	12/4/2023
712 TOUSSAU DR	FRONT-2	CRAPE MYRTLE	Grid Pruning	12/4/2023
718 TOUSSAU DR	FRONT-1	CRAPE MYRTLE	Grid Pruning	12/4/2023

STREET ADDRESS	SIDE	COMMON NAME	WORK TYPE	DATE COMPLETE
718 TOUSSAU DR	FRONT-2	CRAPE MYRTLE	Grid Pruning	12/4/2023
728 TOUSSAU DR	FRONT-1	CRAPE MYRTLE	Grid Pruning	12/4/2023
728 TOUSSAU DR	FRONT-2	CRAPE MYRTLE	Grid Pruning	12/4/2023
733 TOUSSAU DR	FRONT-1	CRAPE MYRTLE	Grid Pruning	12/4/2023
736 TOUSSAU DR	FRONT-1	CRAPE MYRTLE	Grid Pruning	12/4/2023
736 TOUSSAU DR	FRONT-2	CRAPE MYRTLE	Grid Pruning	12/4/2023
749 TOUSSAU DR	FRONT-1	CRAPE MYRTLE	Grid Pruning	12/4/2023
749 TOUSSAU DR	FRONT-2	CRAPE MYRTLE	Grid Pruning	12/4/2023
757 TOUSSAU DR	FRONT-1	CRAPE MYRTLE	Grid Pruning	12/4/2023
757 TOUSSAU DR	FRONT-2	CRAPE MYRTLE	Grid Pruning	12/4/2023
757 TOUSSAU DR	SIDE-1	HOLLY OAK	Grid Pruning	12/4/2023
2 TRANSPORTATION CENTER	FRONT-18	BOTTLE TREE	Service Request Pruning	12/15/2023
2 TRANSPORTATION CENTER	FRONT-19	BOTTLE TREE	Service Request Pruning	12/15/2023
2 TRANSPORTATION CENTER	FRONT-20	BOTTLE TREE	Service Request Pruning	12/15/2023
2 TRANSPORTATION CENTER	FRONT-21	BOTTLE TREE	Service Request Pruning	12/15/2023
1219 VALLE VISTA DR	SIDE-1	SOUTHERN MAGNOLIA	Grid Pruning	12/1/2023
1219 VALLE VISTA DR	SIDE-2	SOUTHERN MAGNOLIA	Grid Pruning	12/1/2023
1227 VALLE VISTA DR	FRONT-1	HOLLY OAK	Grid Pruning	12/19/2023
1242 VALLE VISTA DR	FRONT-1	CRAPE MYRTLE	Grid Pruning	12/4/2023
1248 VALLE VISTA DR	FRONT-1	CRAPE MYRTLE	Grid Pruning	12/4/2023
1260 VALLE VISTA DR	FRONT-1	CRAPE MYRTLE	Grid Pruning	12/4/2023
1266 VALLE VISTA DR	FRONT-1	CRAPE MYRTLE	Grid Pruning	12/4/2023
1320 VALLE VISTA DR	FRONT-1	CRAPE MYRTLE	Grid Pruning	12/4/2023
1320 VALLE VISTA DR	FRONT-2	CRAPE MYRTLE	Grid Pruning	12/4/2023
1326 VALLE VISTA DR	FRONT-1	CRAPE MYRTLE	Grid Pruning	12/4/2023
1332 VALLE VISTA DR	FRONT-1	CRAPE MYRTLE	Grid Pruning	12/4/2023
1332 VALLE VISTA DR	FRONT-2	CRAPE MYRTLE	Grid Pruning	12/4/2023
100 VALLEY VIEW DR /E	FRONT-1	YEW PINE	Grid Pruning	12/15/2023
100 VALLEY VIEW DR /E	FRONT-2	YEW PINE	Grid Pruning	12/15/2023
100 VALLEY VIEW DR /E	FRONT-3	YEW PINE	Grid Pruning	12/15/2023
1900 VALWOOD DR	FRONT-2	LEMON BOTTLEBRUSH	Grid Pruning	12/5/2023
1900 VALWOOD DR	FRONT-3	LEMON BOTTLEBRUSH	Grid Pruning	12/5/2023
1900 VALWOOD DR	FRONT-4	LEMON BOTTLEBRUSH	Grid Pruning	12/6/2023
1900 VALWOOD DR	FRONT-5	LEMON BOTTLEBRUSH	Grid Pruning	12/6/2023

STREET ADDRESS	SIDE	COMMON NAME	WORK TYPE	DATE COMPLETE
1900 VALWOOD DR	FRONT-6	LEMON BOTTLEBRUSH	Grid Pruning	12/5/2023
1900 VALWOOD DR	FRONT-7	LEMON BOTTLEBRUSH	Grid Pruning	12/5/2023
1900 VALWOOD DR	FRONT-8	LEMON BOTTLEBRUSH	Grid Pruning	12/5/2023
1900 VALWOOD DR	FRONT-9	LEMON BOTTLEBRUSH	Grid Pruning	12/5/2023
1900 VALWOOD DR	FRONT-10	LEMON BOTTLEBRUSH	Grid Pruning	12/5/2023
1900 VALWOOD DR	FRONT-14	LEMON BOTTLEBRUSH	Grid Pruning	12/5/2023
1900 VALWOOD DR	FRONT-15	LEMON BOTTLEBRUSH	Grid Pruning	12/5/2023
1901 VALWOOD DR	FRONT-1	CARROTWOOD	Grid Pruning	12/5/2023
1901 VALWOOD DR	FRONT-2	CARROTWOOD	Grid Pruning	12/5/2023
1901 VALWOOD DR	FRONT-3	CARROTWOOD	Grid Pruning	12/5/2023
1901 VALWOOD DR	FRONT-4	CARROTWOOD	Grid Pruning	12/5/2023
1901 VALWOOD DR	FRONT-5	CARROTWOOD	Grid Pruning	12/5/2023
1901 VALWOOD DR	FRONT-8	CARROTWOOD	Grid Pruning	12/5/2023
1901 VALWOOD DR	FRONT-9	CARROTWOOD	Grid Pruning	12/5/2023
1909 VALWOOD DR	FRONT-1	CARROTWOOD	Grid Pruning	12/5/2023
1917 VALWOOD DR	FRONT-1	CARROTWOOD	Grid Pruning	12/5/2023
1941 VALWOOD DR	FRONT-1	CARROTWOOD	Grid Pruning	12/4/2023
1949 VALWOOD DR	FRONT-1	CARROTWOOD	Grid Pruning	12/4/2023
1973 VALWOOD DR	FRONT-1	CARROTWOOD	Grid Pruning	12/6/2023
1973 VALWOOD DR	FRONT-2	CARROTWOOD	Grid Pruning	12/6/2023
1973 VALWOOD DR	SIDE-1	JACARANDA	Grid Pruning	12/6/2023
2001 VALWOOD DR	FRONT-1	CARROTWOOD	Grid Pruning	12/7/2023
2001 VALWOOD DR	SIDE-1	JACARANDA	Grid Pruning	12/7/2023
2001 VALWOOD DR	SIDE-3	JACARANDA	Grid Pruning	12/7/2023
2001 VALWOOD DR	SIDE-4	JACARANDA	Grid Pruning	12/7/2023
2017 VALWOOD DR	FRONT-1	CARROTWOOD	Grid Pruning	12/7/2023
2025 VALWOOD DR	FRONT-1	CARROTWOOD	Grid Pruning	12/7/2023
2041 VALWOOD DR	FRONT-1	CARROTWOOD	Grid Pruning	12/7/2023
2049 VALWOOD DR	FRONT-1	CARROTWOOD	Grid Pruning	12/7/2023
2101 VALWOOD DR	FRONT-1	CARROTWOOD	Grid Pruning	12/7/2023
1036 VIRGINIA RD	SIDE-2	EVERGREEN PEAR	Grid Pruning	12/1/2023
512 VIRGINIA RD	FRONT-1	JACARANDA	Grid Pruning	12/14/2023
518 VIRGINIA RD	SIDE-1	JACARANDA	Grid Pruning	12/12/2023
518 VIRGINIA RD	SIDE-2	JACARANDA	Grid Pruning	12/12/2023

STREET ADDRESS	SIDE	COMMON NAME	WORK TYPE	DATE COMPLETE
700 VIRGINIA RD	SIDE-1	CARROTWOOD	Grid Pruning	12/4/2023
700 VIRGINIA RD	SIDE-2	CARROTWOOD	Grid Pruning	12/4/2023
150 WALNUT AV /E	FRONT-2	BRISBANE BOX	Prune Backup - Crew	12/14/2023
190 WALNUT AV /E	FRONT-2	BRISBANE BOX	Prune Backup - Crew	12/14/2023
190 WALNUT AV /E	FRONT-9	BRISBANE BOX	Prune Backup - Crew	12/14/2023
190 WALNUT AV /E	FRONT-10	BRISBANE BOX	Prune Backup - Crew	12/14/2023



Agenda Report

Parks & Recreation Commission

MEETING DATE: JANUARY 8, 2024

TO: PARKS & RECREATION COMMISSION

SUBMITTED BY: DAISY PEREZ, DEPUTY CITY MANAGER

PREPARED BY: EDGAR ROSALES, SENIOR ADMINISTRATIVE ANALYST
ECHE ECHEVERRIA, PARKS AND RECREATION
SUPERVISOR I

SUBJECT: POOCH PARK UPDATE

SUMMARY

On March 21, 2023, City Council rejected construction bids and allocation of park dwelling funds to relocate the Fullerton Pooch Park from Hunt Library Park to Brea Dam Park. Council also directed staff to return to Parks and Recreation Commission for direction. Staff has since been working on reducing costs if Pooch Park is relocated to Brea Dam Park as well as looking for alternate options.

RECOMMENDATION

Recommend approval of one of the following options to the City Council:

1. Continue plans to relocate Fullerton Pooch Park to Brea Dam Park.
OR
2. Propose relocation of the Pooch Park to White Park or alternate location proposed by the Commission.
OR
3. Propose to keep the Fullerton Pooch Park at its current location permanently with a reduced footprint and modified hours of operation.

FISCAL IMPACT

There is no fiscal impact associated with this action. Based on the direction provided, staff will return with a final concept plan is prepared.

BACKGROUND

The Fullerton Pooch Park was established in June 2007, by the Parks & Recreation Department, on a temporary basis at the Hunt Branch Park and Hunt Branch Library property. It became a permanent facility in 2009. It is very popular and has been in constant six days a week operation since 2007 (temporary COVID-19 closures notwithstanding). The Pooch Park is 1.5 acres divided into three separate fenced-in areas: a grass yard for large dogs, a grass yard for small dogs and a wood chip yard for overflow or inclement weather. The Pooch Park is operated by the Fullerton Dog Park Foundation through an operations agreement with the City. The Foundation has operated the Pooch Park for the City since 2011.

DISCUSSION

The Fullerton Pooch Park is an extremely popular venue and it is extensively used by both residents and non-residents alike. During the height of the COVID-19 shut-down, the Department received many calls regarding the Pooch Park, requesting information on the re-opening, as it did about playgrounds. It is an extremely popular outdoor destination and in a typical summer, it is not unusual to have hundreds of dogs use the park on any given day.

Recent discussions regarding the future repurposing of the Hunt Branch Library site led City Council to direct the formation of an ad-hoc committee to address the library site as it relates to its future uses. The committee was charged to look at possible uses of the building and surrounding areas of the general site. That study ultimately resulted in discussions to create a new public/private venue utilizing the Hunt Branch Library as a cultural center, to include possible new uses for its surrounding areas that currently encompass the Pooch Park.

As a result, the Parks & Recreation Department received direction from the City Manager's office to begin the process of relocating the Pooch Park. Several sites were reviewed with the following in mind; size, suitability, access, parking, shade, impacts to adjacent areas, existing infrastructure, amenities, and cost.

The Brea Dam Park, located at 1700 N. Harbor Blvd. at the base of the Brea Dam, was identified as the best fit for the Pooch Park. The Brea Dam Park is centrally located and has a sufficient parking lot, restrooms, and a large open turf area. In addition, the park is not adjacent to any residential neighborhoods.

On March 21, 2023, City Council rejected construction bids and allocation of park dwelling funds to relocate the Fullerton Pooch Park from Hunt Library Park to Brea Dam Park. Council also directed staff to return to Parks and Recreation Commission for direction. Staff has since been working on reducing costs if Pooch Park is relocated to Brea Dam Park as well as looking for alternate options. City staff has been working with the US Army Corps of Engineers to obtain written approval for the Pooch Park concept at Brea Dam Park. The US Army Corps of Engineers has requested minor technical modifications to the proposed plans. The proposed changes would require approximately \$25,000 to \$30,000 in consulting fees to make the changes.

Before staff moves forward with any allocating any additional costs towards this project, staff is seeking direction from the Parks and Recreation Commission on the future of Pooch Park. The commission may recommend that the City Council keep the Pooch Park at its current location and make modifications at that site, or that Pooch Park be relocated to another location in the city. The commission may also recommend an alternate option or provide alternate direction to staff.

EXISTING POOCH PARK SITE UPDATES

Until a new location is approved by City Council, staff is proposing that the existing Pooch Park would remain at its current location. City staff met with the Pooch Park Foundation to discuss the current issues and possible relocation. At the meeting, several issues have been identified that necessitate immediate attention to enhance the overall experience for both dogs and their owners. The fencing surrounding the park has shown signs of wear and tear, compromising the safety of the canine visitors. To address this concern, staff is currently working on repairs to the fence that were caused from fallen tree limbs that resulted from a recent wind event.

Additionally, the amenities within the park have become outdated and insufficient, hindering the recreational opportunities for the furry companions. In response, staff plans to introduce new and improved furniture, including new benches and other seating options throughout the site. Furthermore, the existing rules and hours signs have become weathered and less visible, leading to confusion among park visitors. To address these issues, staff will be replacing old signs and updating the hours of operations for the park. Lastly, cracks alongside the walking paths have emerged over time, posing potential hazards to both dogs and their owners. To rectify this, we will add decomposed granite (DG) in the cracks.

During the meeting with the Pooch Park Foundation, the foundation expressed an interest for the dog park to remain at its current location permanently. Staff recommends that if the Commission decides to recommend this as an option to the City Council that the following items be included as part of this option:

1. Reduce the size of the large dog area by pushing back the large dog park fence on the west side to provide more of a buffer between the Pooch Park and the Hunt Library facility.
2. Modify the operating hours of the facility on weekends (mainly Friday and Saturday nights) when the Hunt Library is booked for private event rentals.

RELOCATION OPTIONS

1. Brea Dam Park

Staff is proposing three potential options for relocation of Pooch Park. First being at the Brea Dam. This location would include one small dog area and one large dog area. To improve the overall experience for park-goers, restroom facilities are being made readily available. The amenities within the park would undergo a significant upgrade, with new seating areas and water fountains to cater to the diverse needs for the dogs and their owners. The parking lot is being transformed into a gravel surface, providing a more stable

and mud-resistant solution. Additionally, a brand-new concrete pathway is being installed, creating a smooth and durable walking surface.

During staff's meeting with the Pooch Park Foundation, they expressed support for this location with the restrooms being available. Their concern for this location was the potential of dogs running onto Harbor Blvd. and the potential of falling on the gravel in the parking lot.

2. White Park

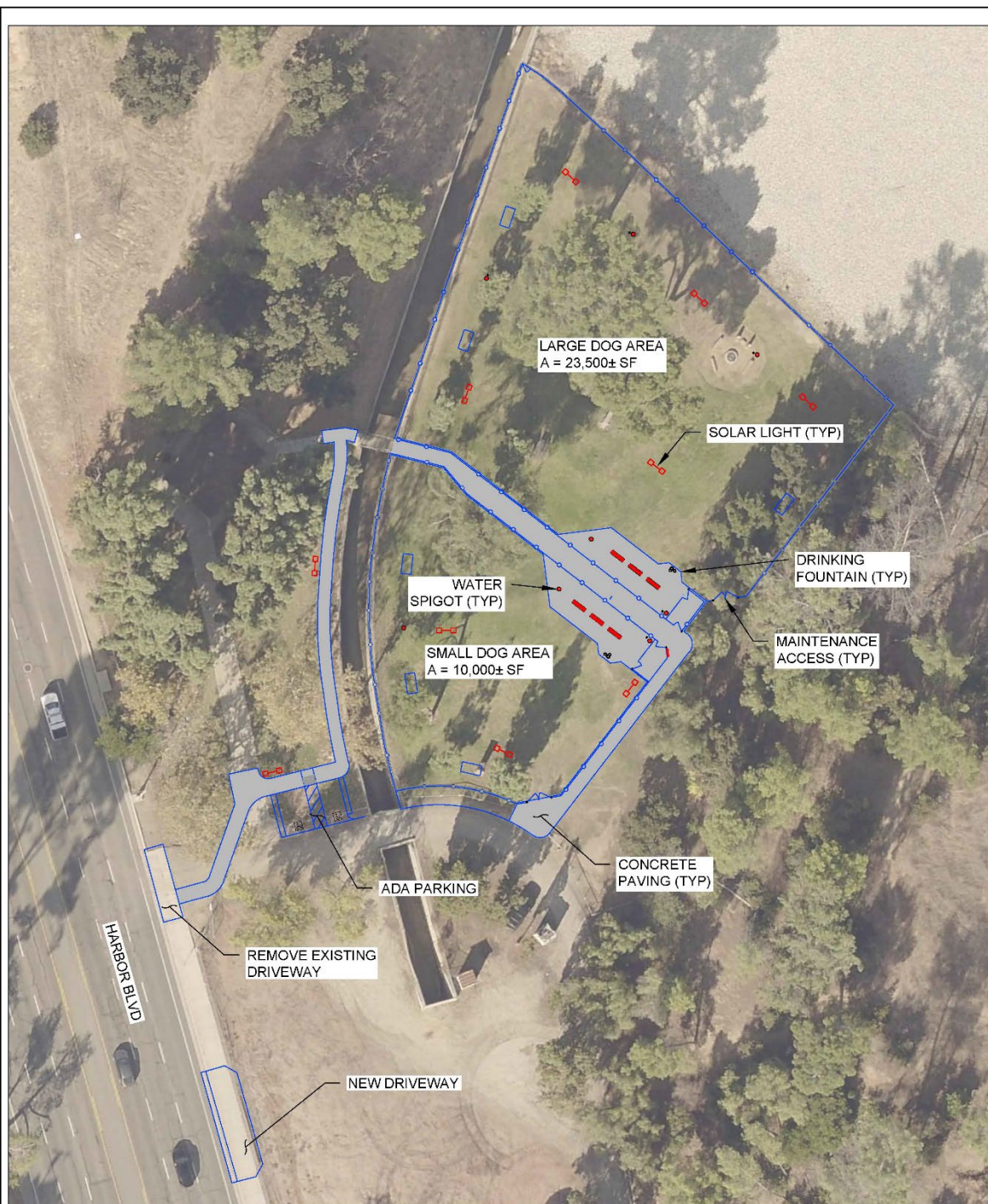
The second location we presented to the Pooch Park Foundation was White Park. This location would have three separate areas. One large dog area, one small dog area, and a separate dog area. This location will have a much larger area for both small and large dog areas compared to the Brea Dam and the current location of the Pooch Park.

The amenities with this park would include new seating areas and water fountains. No new restrooms are proposed at this location. The Pooch Park Foundation liked that the location had more space for both small and large dogs. Their concern was that there is no designated parking lot and no restrooms at this location.

Attachments:

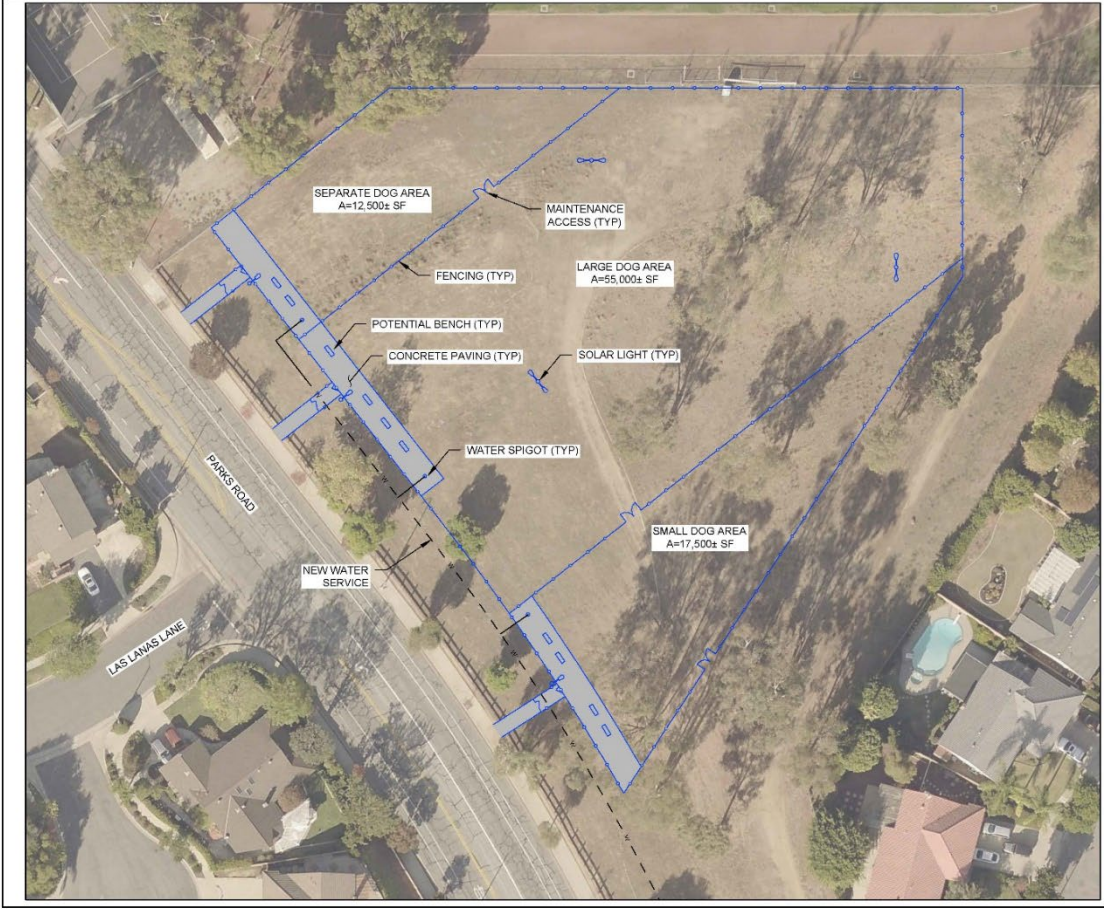
Attachment 1 – Pooch Park Proposed Site 1

Attachment 2 – Pooch Park Proposed Site 2



POOCH PARK RELOCATION

BREA DAM PARK
PROPOSED SITE IMPROVEMENTS



WHITE PARK
PROPOSED SITE IMPROVEMENTS

POOCH PARK RELOCATION



Agenda Report

Parks & Recreation Commission

MEETING DATE: JANUARY 8, 2024

TO: PARKS & RECREATION COMMISSION

SUBMITTED BY: DAISY PEREZ, DEPUTY CITY MANAGER

PREPARED BY: ECHE ECHEVERRIA, PARKS AND RECREATION SUPERVISOR I

SUBJECT: PARTNER LEAGUES COMPLIANCE REPORT 2023

SUMMARY

The City of Fullerton uses the Athletic Field Use and Allocation Policy to manage the equitable allocation of sports fields for the Fullerton community's recreational uses. Partner leagues are required to submit documentation to ensure transparency and compliance with the policy for the 2023 Spring & Fall season.

RECOMMENDATION

Receive and File.

FISCAL IMPACT

None.

DISCUSSION

On November 5, 2019, City Council approved the Athletic Field Use and Allocation Policy. The policy clarifies and strengthens rules regarding priority group qualifications, field allocation processes, and rule compliance consequences.

With the unprecedented challenges posed by the global COVID-19 pandemic, many of the athletic field operations were impacted. Many fields were closed for long periods of time and staffing levels were significantly impacted. The pandemic necessitated a significant shift in priorities, with organizations diverting resources and attention towards ensuring the safety and well-being of their members, adapting to new operational realities, and navigating financial uncertainties for Partner Groups.

Following the resumption of normal sports operations, Parks & Recreation experienced a significant turnover in staff. The turnover brought changes in roles, responsibilities, and organizational focus, impacting the seamless execution of routine compliance procedures. Also, some Partner groups had changes to their board and were not informed of certain documentation needed to be submitted or guidelines they needed to follow within the policy.

Over the last year, staff has been working on rebuilding the Parks and Trails Division. With a new supervisor on board, staff recognizes the importance of these documents and the need for compliance to reinstate regular documentation collection.

A compliance report was prepared for the 2023 Fall and Spring Seasons and outlines the violations from all Partner Leagues and submitted or missing items required in the Athletic Policy (Attachment 1). Moving forward, staff will be ensuring that all necessary information is promptly gathered to maintain compliance.

Attachments:

Attachment 1 - 2023 Athletic Field Use and Allocation Policy Compliance Report

2023 Athletic Field Use and Allocation Policy Compliance Report

List of Violations 2023

Fullerton Rangers Rec

-Fall Season Rangers Rec did not meet the Fullerton Residency Rate of 80%

Fullerton Rangers Comp

- Spring Season Rangers Comp did not meet the Fullerton Residency rate of 55%

-Fall Season Rangers Comp did not meet the Fullerton Residency rate of 55%

Fullerton Hills Softball

-Spring Season did not meet the Fullerton Residency Rate of 80%

-Failed to submit Fall and Spring rosters on time

-Failed to submit opening ceremony details on time for approval

Fullerton Bears

-Failed to submit Fall and Spring rosters on time

West Fullerton

-Failed to disclose details about there opening ceremony in the Spring

East Fullerton

-Fall Season did not meet the Fullerton Residency Rate of 80%

Fullerton Rugby

-No communications with this Rugby since Fall of 2022.

All Leagues

-Had an Outstanding Balance for field rentals from years prior

Spring 2023

	Sports Field Request Due	Sports Field Request Rec'd	Master Calendar	Hold Harmless	Certificate of Insurance	Board Member List	Non Profit Status	Financial Statement	Practice Schedule	Game Schedule	Rosters	Residency Rate	Tournament Requests	Background Checks
East Fullerton	11/15/2022	10/24/2022		12/15/2022					1/23/23	2/1/23	1/27/2023	82.00%	N/A	
West Fullerton	11/15/2022	10/24/2022		12/27/2022					1/23/23	2/1/23	4/4/2023	82.00%	N/A	
Golden Hill	11/15/2022	10/24/2022		12/7/2022					1/23/23	2/1/23	1/13/2023	94.00%	11.17.22	
Fullerton Hills	11/15/2022	11/15/2022		12/7/2022					1/30/23	2/15/23	12.20.23	74.72%	N/A	
Fullerton Bears	11/15/2022	11/14/2022		12/7/2022							1/4/23	95%	N/A	
Pop Warner	11/15/2022	11/15/2022		12/7/2022					Not needed	Not Needed	No season	N/A	N/A	
Rangers Rec	11/15/2022	11/15/2022		12/7/2022					3/9/23	3/8/23	3/8/2023	80.00%	N/A	
Rangers Club	11/15/2022	11/15/2022		12/7/2022							3/8/2023	34.00%	6/10 6/11	
Rangers Signature	11/15/2022	11/15/2022		12/7/2022							3/8/2023	82.00%	6/10 6/11	
Rugby	11/15/2022	No Spring	N/A	N/A	Not needed	N/A	N/A	N/A	N/A	N/A	Not needed	N/A	N/A	N/A



Completed



Turned in Late



No Recorded

Fall 2023

	Sports Field Request Due	Sports Field Request Rec'd	Master Calendar	Hold Harmless	Certificate of Insurance	Board Member List	Non Profit Status	Financial Statement	Practice Schedule	Game Schedule	Rosters	Residency Rate	Tournament Requests	Background Checks
East Fullerton	5/15/2023	5/16/23		6/13/23		9/18/23	12/29/23	12/29/23	8/24/23		9/20/23	75.53%	N/A	9/20/23
West Fullerton	5/15/2023	No City Use		6/13/23	N/A	N/A			N/A	N/A	N/A	N/A	N/A	N/A
Golden Hill	5/15/2023	4/16/2023		6/13/23		10/4/23			8/24/23		9/11/23	94.26%	11.17.22	
Fullerton Hills	5/15/2023	5/15/23		6/13/23		12/20/23	12/20/23	12/20/23	5/11/23	9/4/23	12.20.23	80.68%	N/A	12/20/23
Fullerton Bears	5/15/2023	5/12/23		6/13/23		1/3/23	1/4/23				1/4/23	85%	N/A	
Pop Warner	5/15/2023	4/26/2023		6/13/23		8/21/2023		12/27/23	4/25/23	4/25/23	9/28/2023	82.00%	N/A	8/21/23
Rangers Rec	5/15/2023	5/10/23		6/13/23		8/28/2023		1/3/24	8/4/23		8/22/23	76.50%	N/A	
Rangers Sig.	5/15/23	5/10/23		6/13/23		8/28/2023		1/3/24			8/22/23	80.00%	N/A	
Rangers Club	5/15/2023	5/10/23		6/13/23		8/28/2023		1/3/24			8/22/23	43.31%	6/10 6/11	
Rugby	5/15/2023	N/A		N/A	N/A	N/A	N/A	N/A	N/A	N/A	N/A	N/A	N/A	N/A



Completed

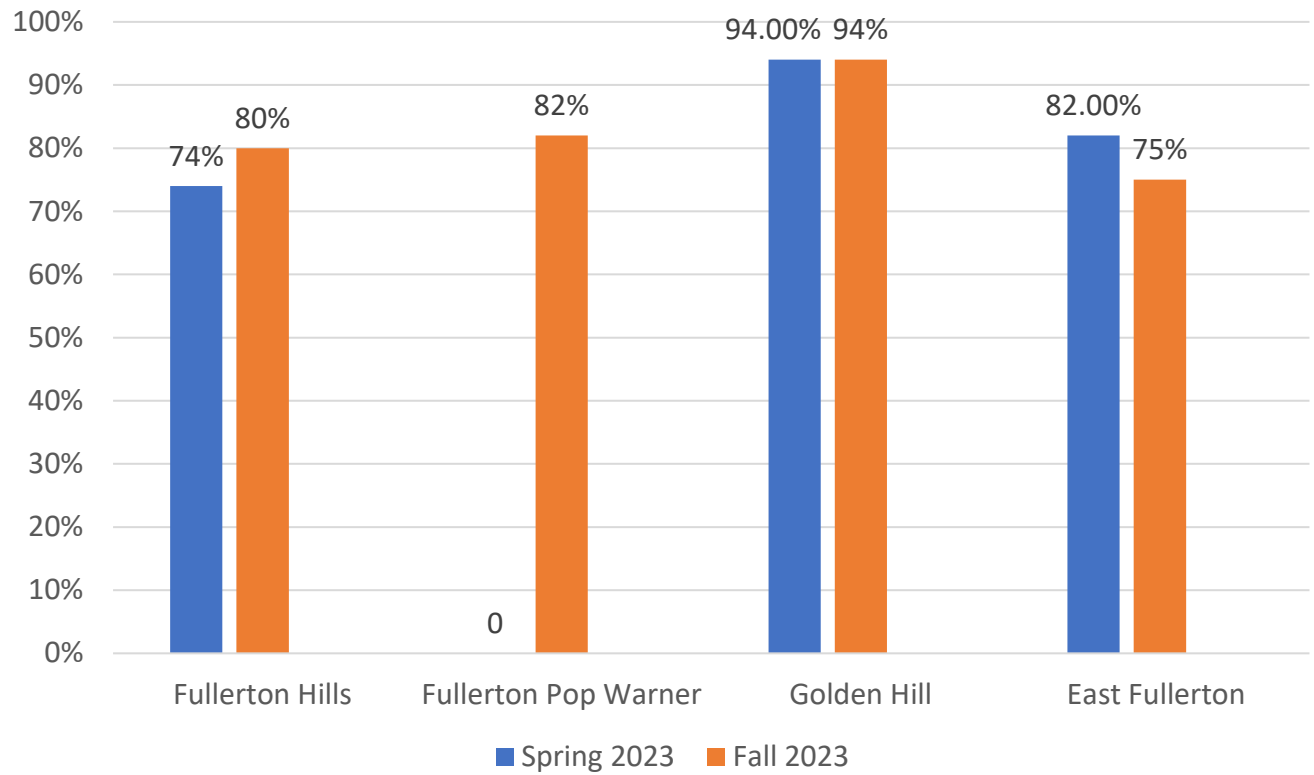


Turned in Late



No Recorded

Rosters 2023



Rosters 2023

