



Fullerton Safety Element Update

City Council

April 1, 2025



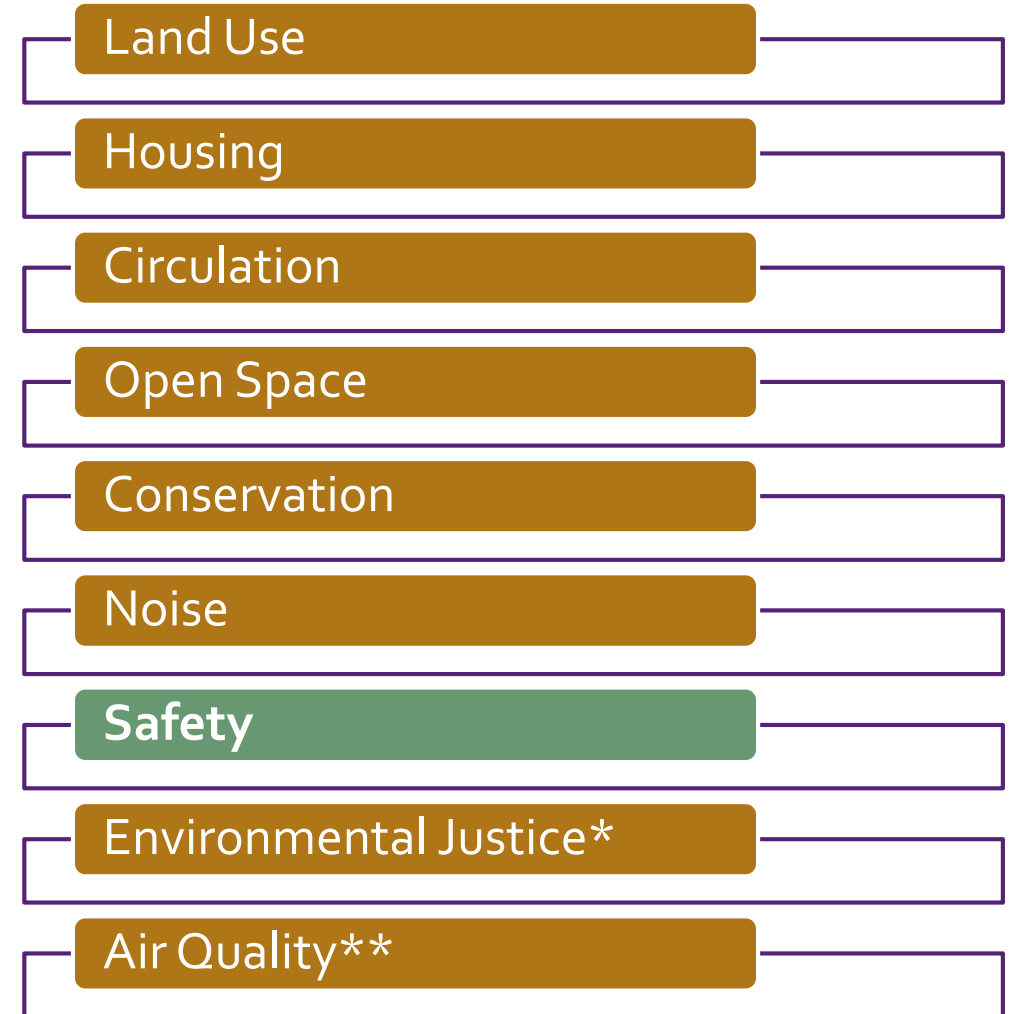
Background – Safety Element

- May 2012 - Fullerton Plan was adopted (including the Safety Element).
- May 2020 - City adopted the latest Local Hazard Mitigation Plan
- Since the original update, California Government Code Section 65302 (g) has been updated **five** times adding new requirements to Safety Elements.
- 2024 - City initiated an update to the Safety Element



What is a Safety Element?

- **Mandatory** chapter of the General Plan
- Addresses the **safety needs of the community**
- **Required Components**
 - ✓ Background and Technical Information
 - ✓ Maps of hazards
 - ✓ Goals and policies
 - ✓ Safety Element Implementation actions and programs
- Safety Element Update **requires** frequent update to meet legislative mandate



* Required if Disadvantaged Communities are located in the Jurisdiction

** Required in certain locations within California



Safety Element Requirements

Govt Code 65302(g)(1) - Protection of the Community From Unreasonable Risks Associated With:

Seismically induced surface rupture

Ground Shaking

Flooding

Tsunami, Seiche, and Dam Failure

Subsidence

Liquefaction

Ground Failure

Wildland and Urban Fires

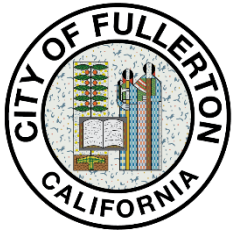
Slope Instability (Mudslides and Landslides)

Military Installations

Peakload Water Supply Requirements

Min. Road Widths & Clearances Around Structures

Evacuation Routes



Safety Element Requirements

65302(g)(2) - 2009

On the next revision of the Housing Element:

- The Safety Element shall be revised to address potential flood hazard issues, mapping, and policies.

65302(g)(3) - 2014

On the next revision of the Housing Element:

- Address wildfire hazard issues if the jurisdiction includes Very High Fire Hazard Severity Zones or State Responsibility Areas. (SB 1241)

65302(g)(4) - 2017

On the next revision of the Local Hazard Mitigation Plan:

- The Safety Element shall be reviewed and updated as necessary to address climate adaptation and resiliency through the preparation of a vulnerability assessment or reliance on a Local Hazard Mitigation Plan that addresses climate adaptation risks and vulnerabilities. (SB 379)

65302(g)(5) - 2020

On the next revision of the Housing Element on or after January 1, 2020:

- The safety element shall be reviewed and updated as necessary to identify residential developments in any hazard area identified in the safety element that do not have at least two emergency evacuation routes. (SB 99)

65302(g)(6) - 2018

On the next revision of the Housing Element or LHMP:

- The Safety Element shall be updated at least every eight years to address the items identified in GC 65302 (g) 1,2,3,4, and 5. (SB 1035)

65302(g)(7)

Cities/Counties with a flood plain management ordinance approved by FEMA:

- May use the information in the safety element to comply with this subdivision.

65302(g)(8)

Prior to periodic General Plan review or revisions to the Safety Element:

- Consultation with the California Geological Survey of the Department of Conservation, the Central Valley Flood Protection Board (if located within the boundaries of the Sacramento and San Joaquin Drainage District), and California Office of Emergency

65302(g)(9)

Sufficiently detailed County Safety Element:

- Allows a City within the County to adopt the County Safety Element as its own if it contains appropriate policies and programs for adoption by a city.

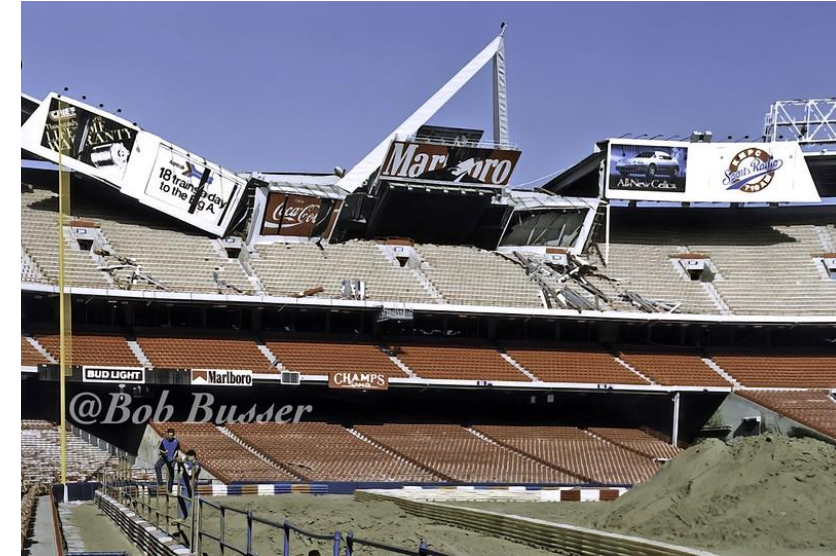


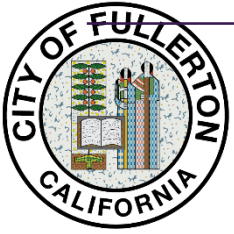
What is in a Safety Element?

Govt Code 65302 (g) (1) - Protection of the Community From Unreasonable Risks Associated With:

Geologic/Seismic Hazards

- ✓ Seismically Induced Surface Rupture
- ✓ Ground Shaking
- ✓ Liquefaction
- ✓ Ground Failure
- ✓ Subsidence





What is in a Safety Element?

Govt Code 65302 (g) (1) - Protection of the Community From Unreasonable Risks Associated With:

Flooding
Dam Inundation
Sea Level Rise
Tsunami/Seiche
Slope Instability

- ✓ Mudslides
- ✓ Landslides





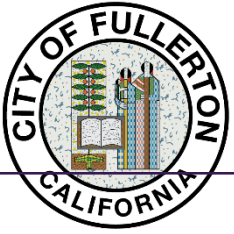
What is in a Safety Element?

Govt Code 65302 (g) (1) - Protection of the Community From Unreasonable Risks Associated With:

Wildland and Urban Fires

- ✓ Evacuation Routes
- ✓ Peak load Water Supply Requirements
- ✓ Minimum Road Widths
- ✓ Clearances Around Structures





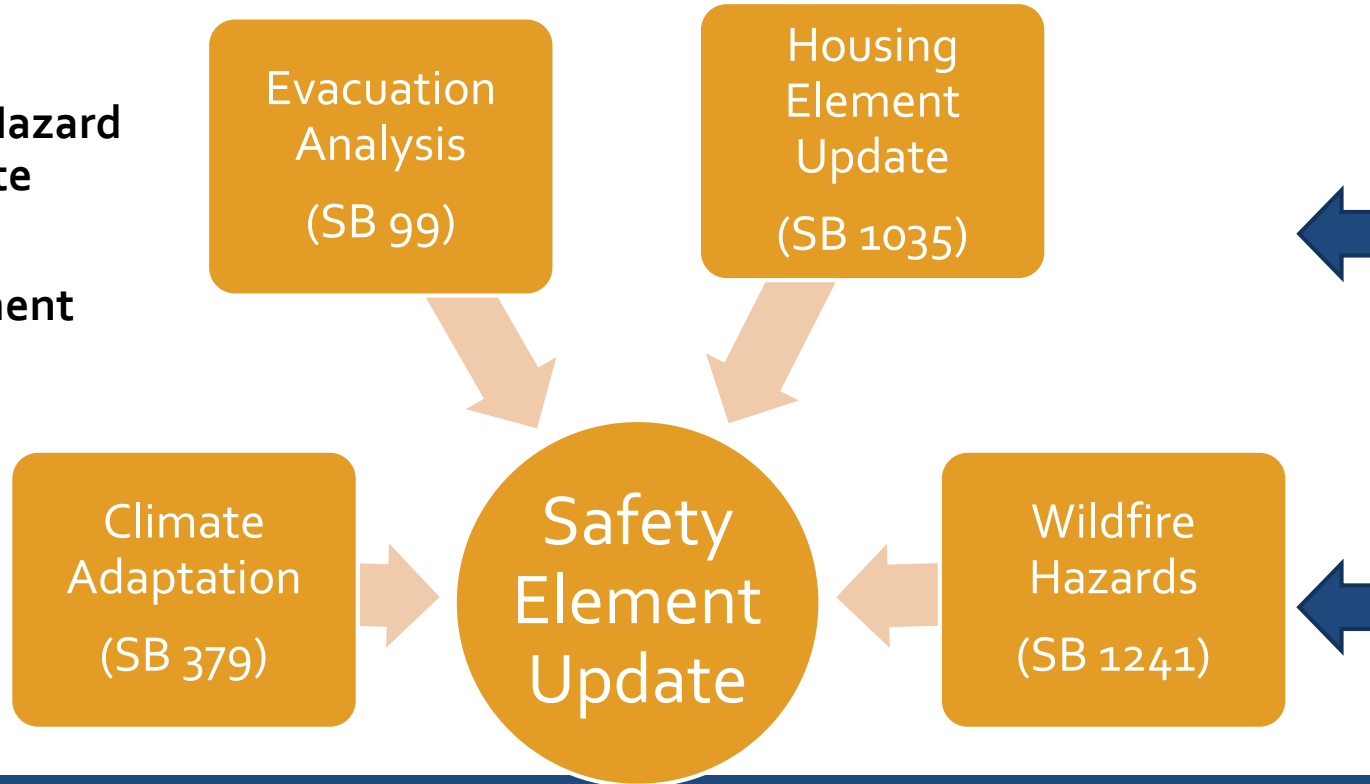
Why Update the Safety Element?

New State Requirements for Safety Elements

Relying on:

2020 Fullerton Local Hazard Mitigation Plan Update

Climate Adaptation Vulnerability Assessment (SB 379)



SB 1035

Integrates the Housing and Safety Elements



AB 2140

Provides financial benefits to jurisdictions that have integrated the LHMP into the Safety Element



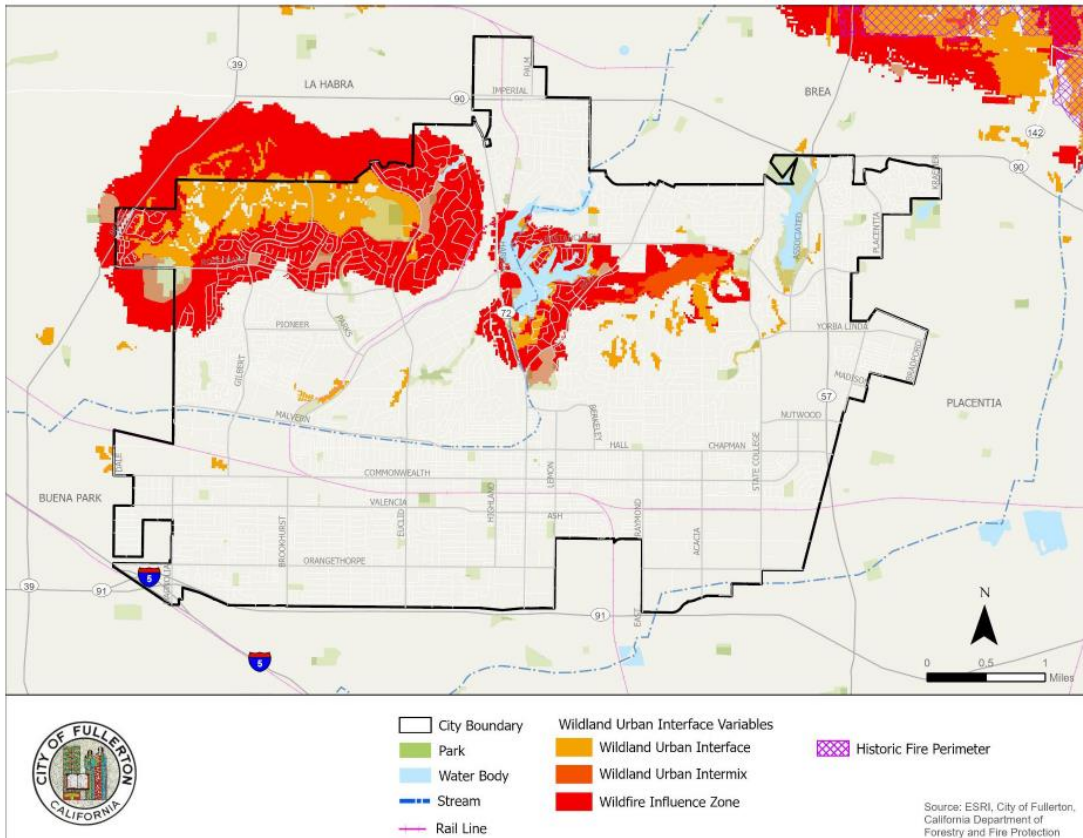
SB 1241

Compliance includes oversight by Cal Fire



Safety Element Requirements

GOAL 12: PROACTIVELY ADDRESSING PUBLIC SAFETY CONCERNS. (EXISTING GOAL)



POLICY FOCUS:

- Vegetation Management/Brush Clearance
- Fire Safe Regulations Requirements
- Historic fire perimeters
- Long term maintenance and operations
- Adequate water supply and infrastructure.

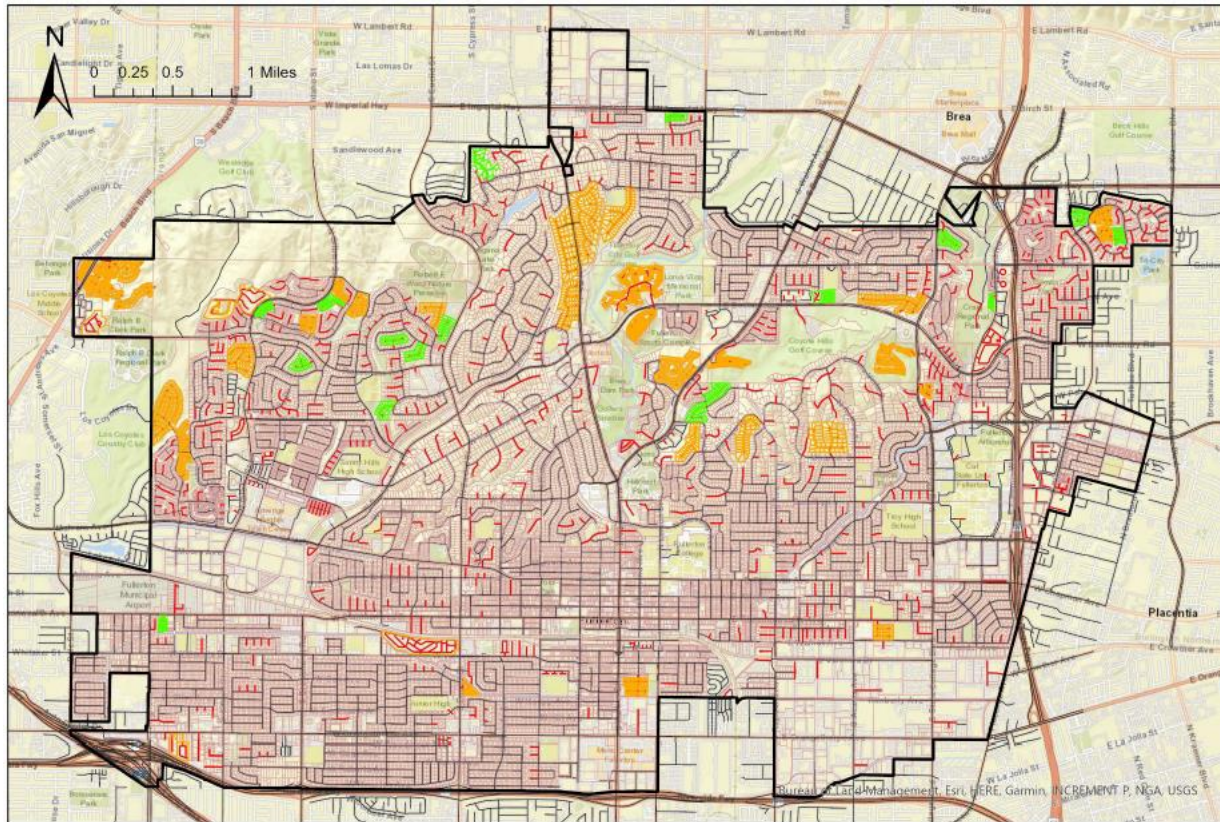
Key Policies – P12.4.2, P12.4.3, P12.14

Wildfire Hazards
(SB 1241)



Safety Element Requirements

GOAL 13: RESPONSIVE TO PUBLIC SAFETY NEEDS. (EXISTING GOAL)



Legend

- | | | |
|------------------------|-----------------------------------|----------------------------|
| Fullerton City Limits | Roadway Network | Constrained Access Parcels |
| Fullerton City Parcels | SB 99 Single Ingress/Egress Roads | Parcels of Concern |

POLICY FOCUS:

- Enhance existing evacuation routes
- Require adequate ingress/egress
- Reduce or eliminate evacuation constraints/ challenges
- Identify single access neighborhoods.

New Policies P13.5.1 through P13.5.7

**Evacuation
Analysis
(SB 99)**



Safety Element Requirements

GOAL 26 (A): A COMMUNITY PREPARED FOR FUTURE CLIMATE RELATED IMPACTS. (NEW GOAL)

HAZARDS OF CONCERN:

- Wildfire
- Landslide
- Flooding



VULNERABILITIES OF CONCERN:

- Households in Poverty
- Persons Experiencing Homelessness
- Chronically Ill Individuals



**Climate
Adaptation
(SB 379)**



Safety Element Process



Public Review Period
(October 2024)



Cal Fire Review Process
(June 24– July 9, 2024)



Board of Forestry and Fire Protection Approval
(July 23, 2024)



Planning Commission Approval
(March 12, 2025)



City Council Approval
(April 1, 2025)



Staff Recommendation

- A RESOLUTION OF THE CITY COUNCIL OF THE CITY OF FULLERTON, CALIFORNIA, AMENDING THE FULLERTON PLAN BY ADOPTING THE SAFETY ELEMENT (APPENDIX I) AND REPLACING GOALS 7, 12, 13, 18, 19, 20, 24 AND 26 OF THE FULLERTON PLAN AS PER EXHIBITS A AND B